



利华高贸易有限公司

# Construction Machinery Catalogue 2024

BUILD YOUR DREAMS WITH RELIABLE SOURCING FROM CHINA

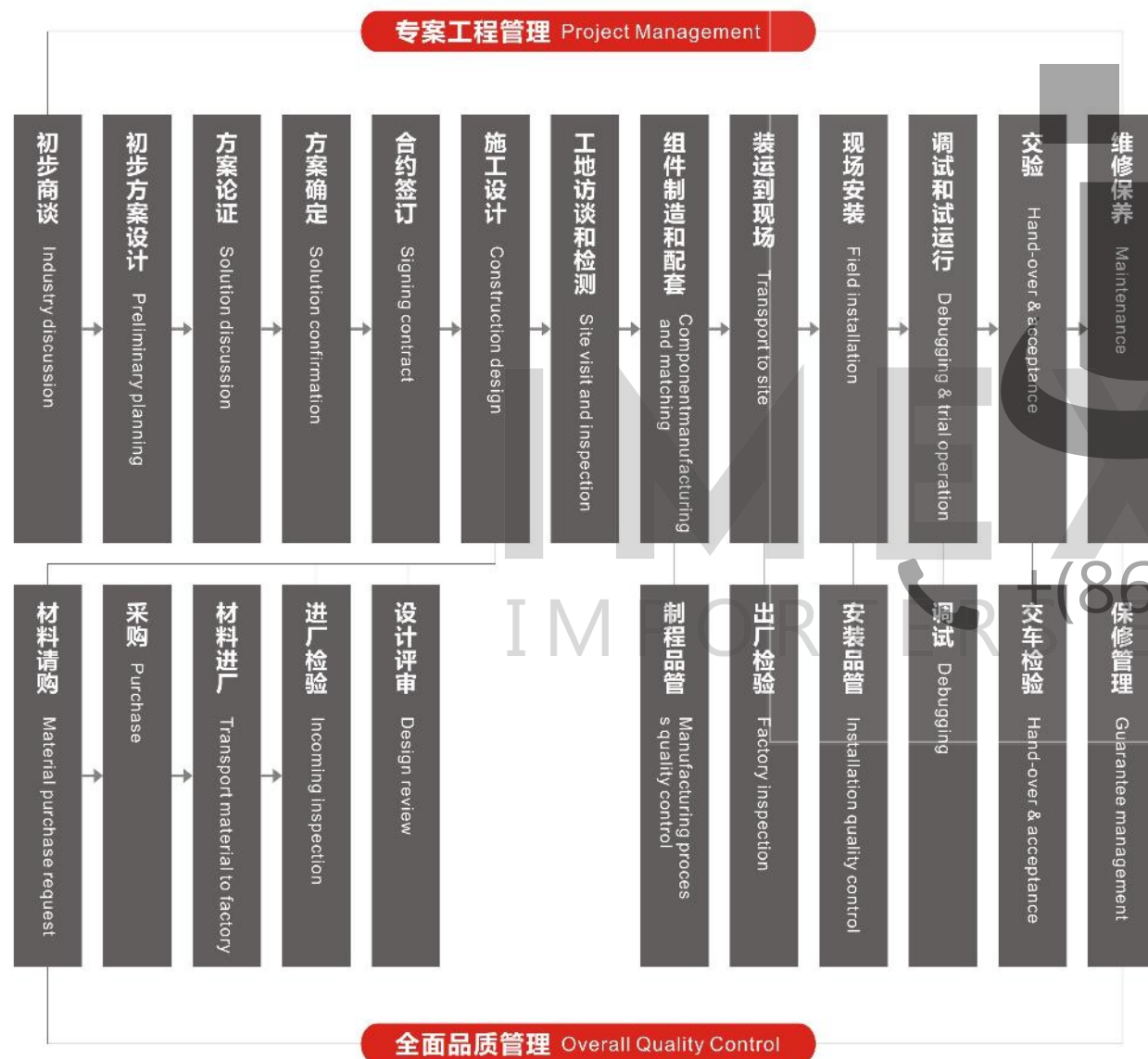
 [www.imexao.com](http://www.imexao.com)

for  
19+ YEARS

专业的停车设备计划管理体系 Parking Facility Planning and Management System

有关自动化停车库工程的计划是以：停车库的用途、营运管理形态、法律上的规范、周边环境、投资金额、建设场所、附近的停车需求等一般为基础，再根据各类机械式停车设备的特性、建设上可能出现的问题点，建设后的维修保养体制等，综合其附带发生的条件综合考虑。

Matters to be considered in planning an automatic parking project include parking lot purpose, operational mode, laws and regulations, surrounding environment, investment, construction site, parking demand, feature of parking facility, problem in construction, maintenance and other problems generated accordingly.

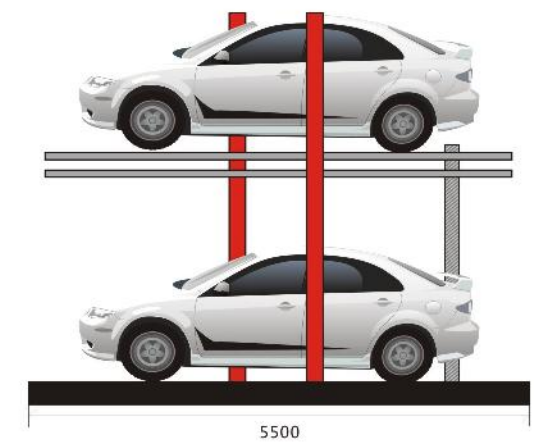
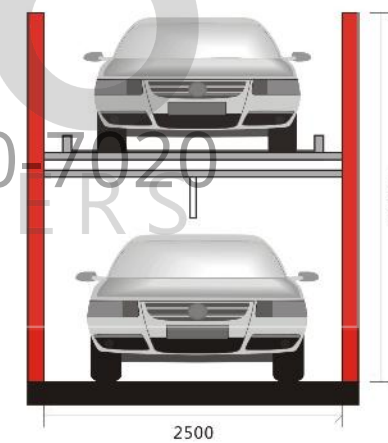


地面结构式 Ground structured

特点 Features

一个车位泊两台车，垂直升降，动作单纯，故障率极低；电动机加链条驱动，运转平稳安静，出入口无立柱，进出非常方便。

One deck for two cars, simply moving up and down, extremely low failure rate; driven through motor and chains, stable and quiet, without entrance and exit posts, convenient for parking and taking out.



简易升降式车库主要参数 Technology parameters

型号	Type	PJS D-GD	
驱动方式	Drive Mode	电机链条 Motor Chain	
适停车辆重量	Parking Vehicle Weight	2000KG	
适停车辆尺寸	Parking Vehicle Dimensions	5000mm(L)x1850mm(W)x1550mm(H)	
操作方式	Operation mode	按钮 Button	
电源	Power supply	AC3Φ380v(50HZ)	
电动机	升降	功率	2.2Kw
		速度	2.35m/min
平均存取时间	Average Parking/Taking Time	≤45秒 (sec)	



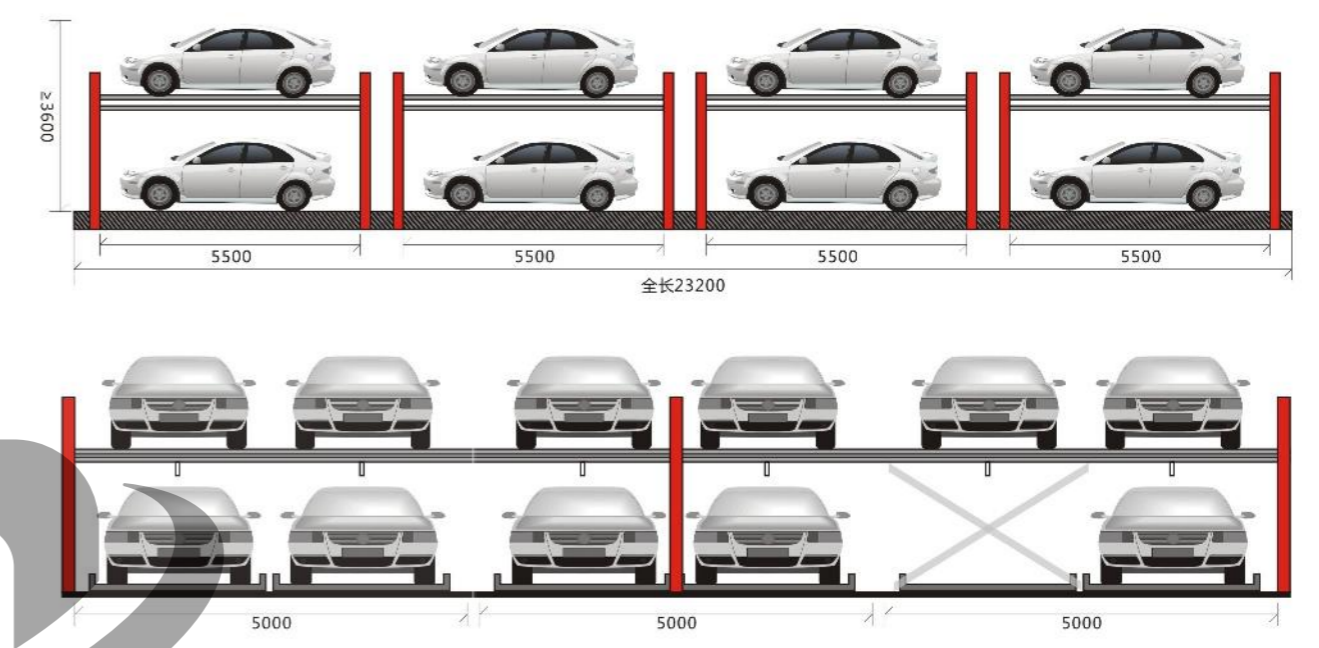
二层升降横移式 Double-Deck Sideways-Moving and Lifting Type

单列式

二层升降横移式 Double-Deck Sideways-Moving and Lifting Type

重叠式

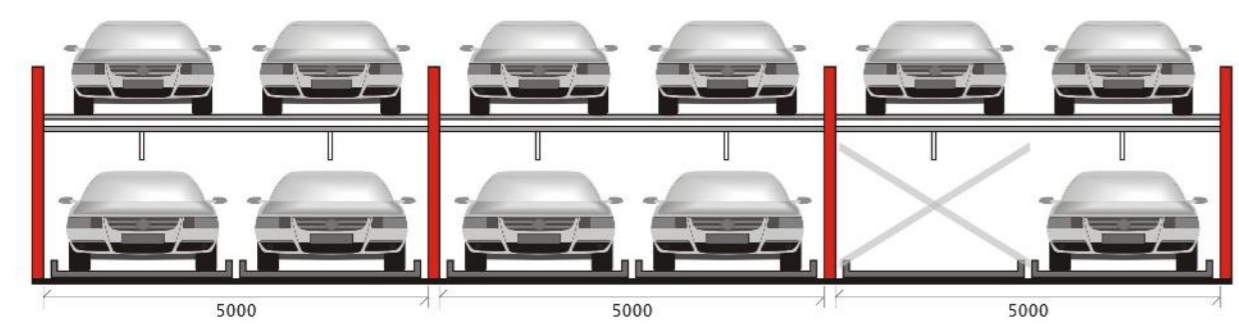
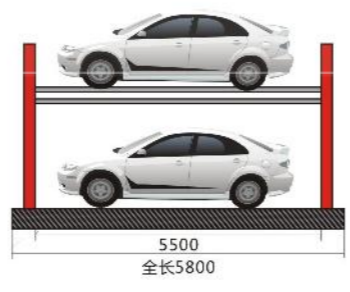
- ① “简单”并不意味着粗糙和低劣，现代社会这样诠释“简单”：商品使用性能最良好的感觉  
“Simplicity” doesn't mean coarseness or low quality. Simplicity is a feeling that can be interpreted in modern society as you feel best from it.
- ② 二层升降横移类停车设备的简单之处在于：  
利用停车办的左右横移上下升降的动作为您创造灵活的停车空间，因而被广泛采用。  
So simple, your parking place is created just by horizontal and vertical motions of the parking deck. No wonder it is used so widely.



运行原理 Principle

顾名思义，本设备的上层载车板可做上下升降运动，而下层载车板可做左右横向移动运动。由于下层设有一个空位，下降至地面，从而取出上层汽车。地面中的下层载车板上的汽车不需任何动作，可以直接出车。

Just as its name implies, the upper deck moves vertically and the lower deck moves sideways. Vehicles on reserved empty space and those on the lower deck can be driven out directly without movement of deck.



CM-1 5



二层升降横移式 Double-Deck Sideways-Moving and Lifting Type

1 二层升降横移式车库操作方便维护简单，是一款既经济有实用的车库。

Economical and practical, this double-deck sideways-moving and lifting type parking system is easy for operation and maintenance.



二层升降横移式车库主要参数 Technology parameters

停车数 Parking Capacity	见车位布置图 See parking layout	上车位 Upper Deck	下车位 Lower Deck	面包车 Microbus
适用车辆参数 Vehicle Parameters	车长 (L) mm V-L mm	≤5000	≤5300	≤5000
	车宽 (W) mm V-W mm	≤1850	≤1900	≤1850
	车高 (H) mm V-H mm	≤1550	≤1550	≤2050
	车辆自重 Kg Weight Kg	≤1700	≤2350	≤1850
驱动方式 Drive Mode	电机+链条 Motor+ chains			
电动机 Motor	升降 Lifting	功率 Power	2.2 Kw	
		速度范围 Speed range	4.1 m/min	
	横移 Sideways-moving	功率 Power	0.2 Kw	
		速度范围 Speed range	6.8 m/min	
操作方式 Horizontal moving	按钮箱、触摸屏、感应式ID卡 Button box touch screen or ID card			
电源 Power supply	3相380V 50HZ 3-phase 380V 50HZ			
平均存取时间 Average Parking/Taking Time	≤50秒 (sec)			

三层升降横移式 Three-Deck Sideways-Moving and Lifting Type

三层升降横移式车库主要参数 Technology parameters

型号 Type	PSH D-GD		
驱动方式 Drive Mode	电机链条 Motor Chain		
适停车辆重量 Parking Vehicle Weight	2000KG		
适停车辆尺寸 Parking Vehicle Dimensions	5000mm(L)x1850mm(W)x1550mm(H)		
操作方式 Operation mode	按钮、刷卡 Button/card		
电源 Power supply	动力 Power	AC3Φ380V(50HZ)	
	照明 Lighting	AC1Φ220V(50HZ)	
电动机 Motor	升降 Lifting	功率 Power 2.2Kw	
		速度范围 Speed range 4.4 m/min	
	横移 Sideways-moving	功率 Power	一层 Ground Deck 0.2Kw 二层 Second Deck 0.4Kw
		速度范围 Speed range 6.8m/min	
平均存取时间 Average Parking/Taking Time	≤55秒 (sec)		



四层升降横移式 Four-Deck Sideways-Moving and Lifting Type

四层升降横移式车库主要参数 Technology parameters

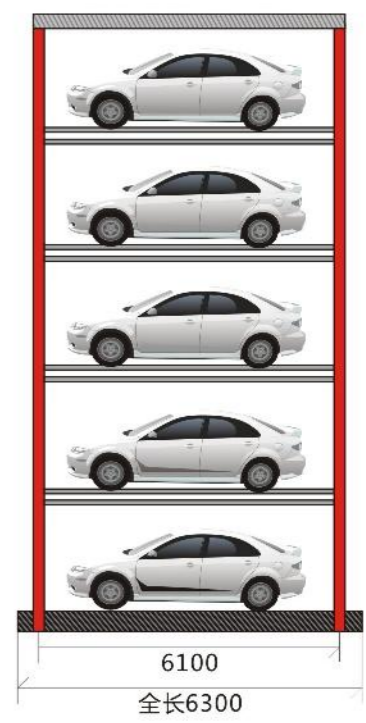
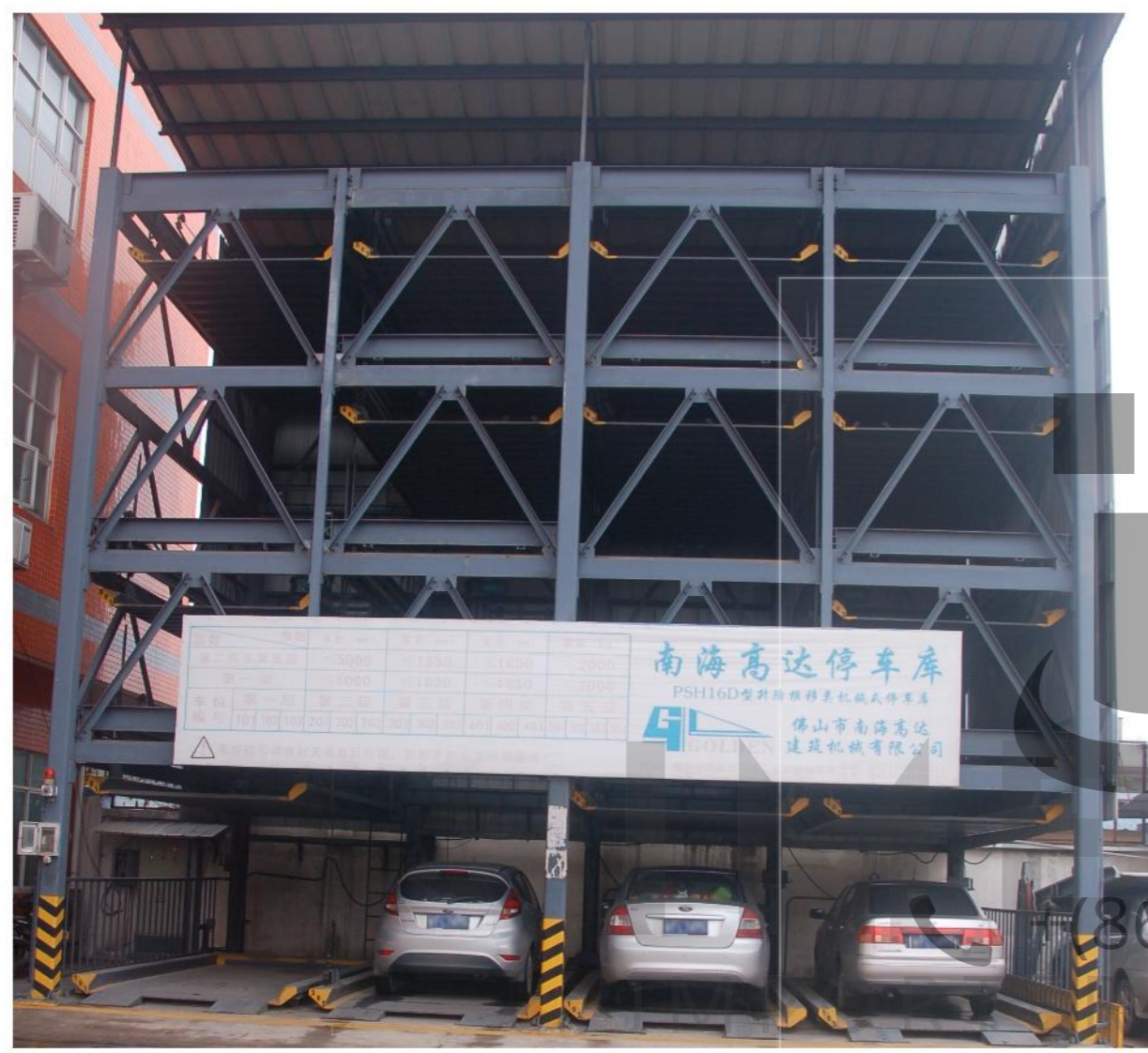
型号 Type	PSH D-GD		
驱动方式 Drive Mode	电机链条 Motor Chain		
适停车辆重量 Parking Vehicle Weight	2000KG		
适停车辆尺寸 Parking Vehicle Dimensions	5000mm(L)x1850mm(W)x1550mm(H)		
操作方式 Operation mode	按钮、刷卡 Button/card		
电源 Power supply	动力 Power	AC3Φ380V(50HZ)	
	照明 Lighting	AC1Φ220V(50HZ)	
电动机 Motor	升降 Lifting	功率 Power	第二层、第三层 Second, Third Deck 2.2Kw 第四层 Four Deck 3.7Kw
		速度范围 Speed range	第二层、第三层 Second, Third Deck 4.4 m/min 第四层 Four Deck 6.6 m/min
	横移 Sideways-moving	功率 Power	第一层 Ground Deck 0.2Kw 第二层、第三层 Second, Third Deck 0.4Kw
		速度范围 Speed range	6.8m/min
平均存取时间 Average Parking/Taking Time	≤60秒 (sec)		





五层升降横移式 Five-Deck Sideways-Moving and Lifting Type

五层升降横移式 Five-Deck Sideways-Moving and Lifting Type

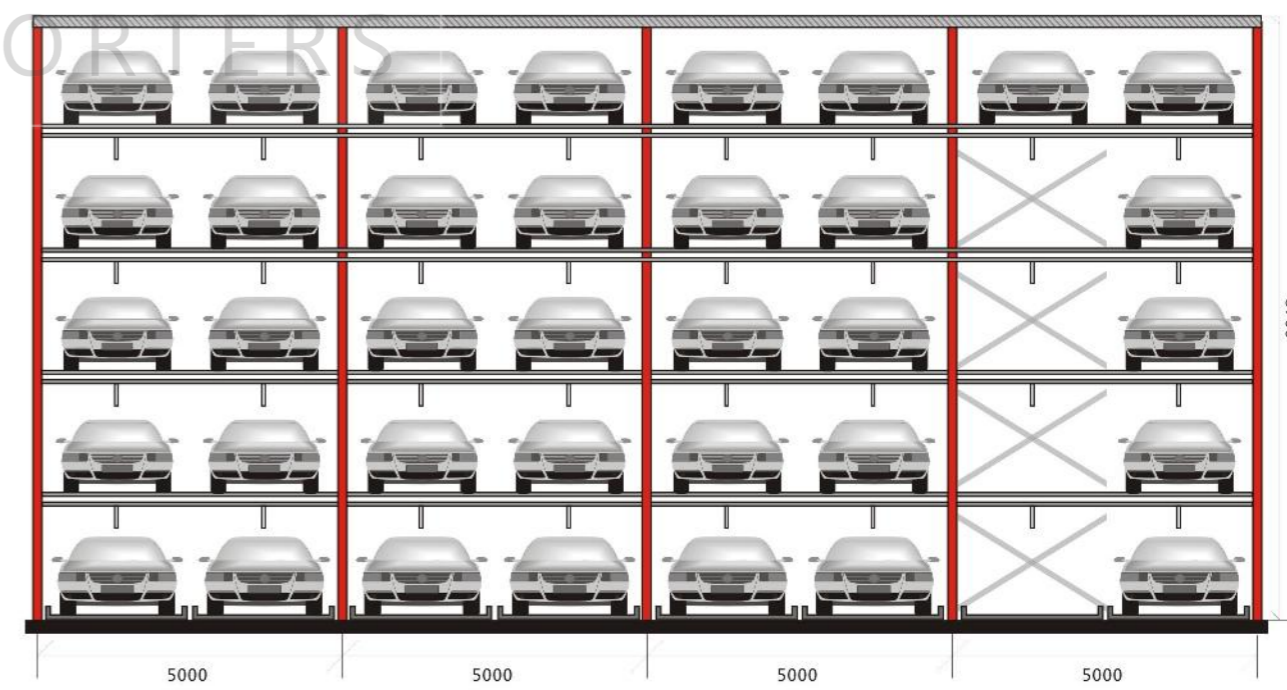


(86) 186-8880-7020

五层升降横移式车库主要参数 Technology parameters

型号 Type	PSH D-GD		
驱动方式 Drive Mode	电机链条 Motor Chain		
适停车辆重量 Parking Vehicle Weight	2000KG		
适停车辆尺寸 Parking Vehicle Dimensions	5000mm(L)x1850mm(W)x1550mm(H)		
操作方式 Operation mode	按钮、刷卡 Button/card		
电源 Power supply	动力 Power	AC3Φ380V(50HZ)	
	照明 Lighting	AC1Φ220V(50HZ)	
电动机 Motor	升降 Lifting	功率 Power	第二层、第三层 Second, Third Deck 2.2Kw 第四层 Four Deck 3.7Kw
		速度范围 Speed range	第二层、第三层 Second, Third Deck 4.4 m/min 第四层、第五层 Four, Fifth Deck 6.6 m/min
	横移 Sideways-moving	功率 Power	第一层 Ground Deck 0.2Kw 第二层、第三层 Second, Third Deck 0.4Kw
		速度范围 Speed range	6.8m/min
平均存取时间 Average Parking/Taking Time	≤65秒 (sec)		

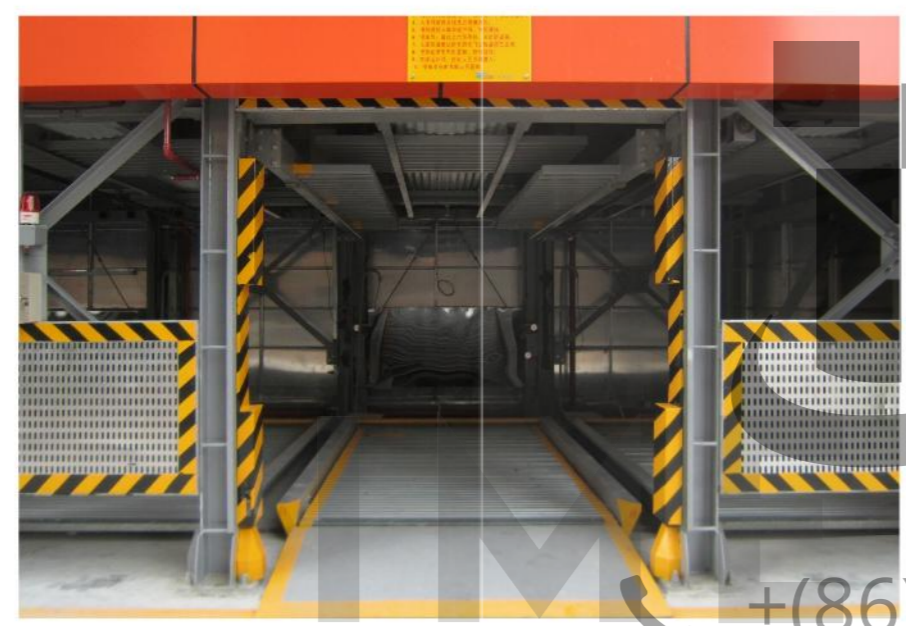
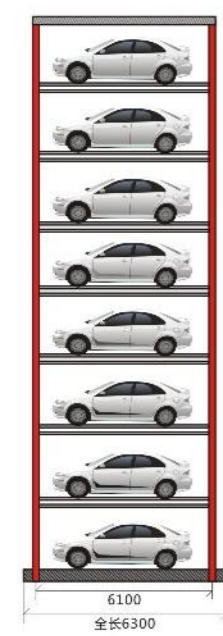
CM-1 7



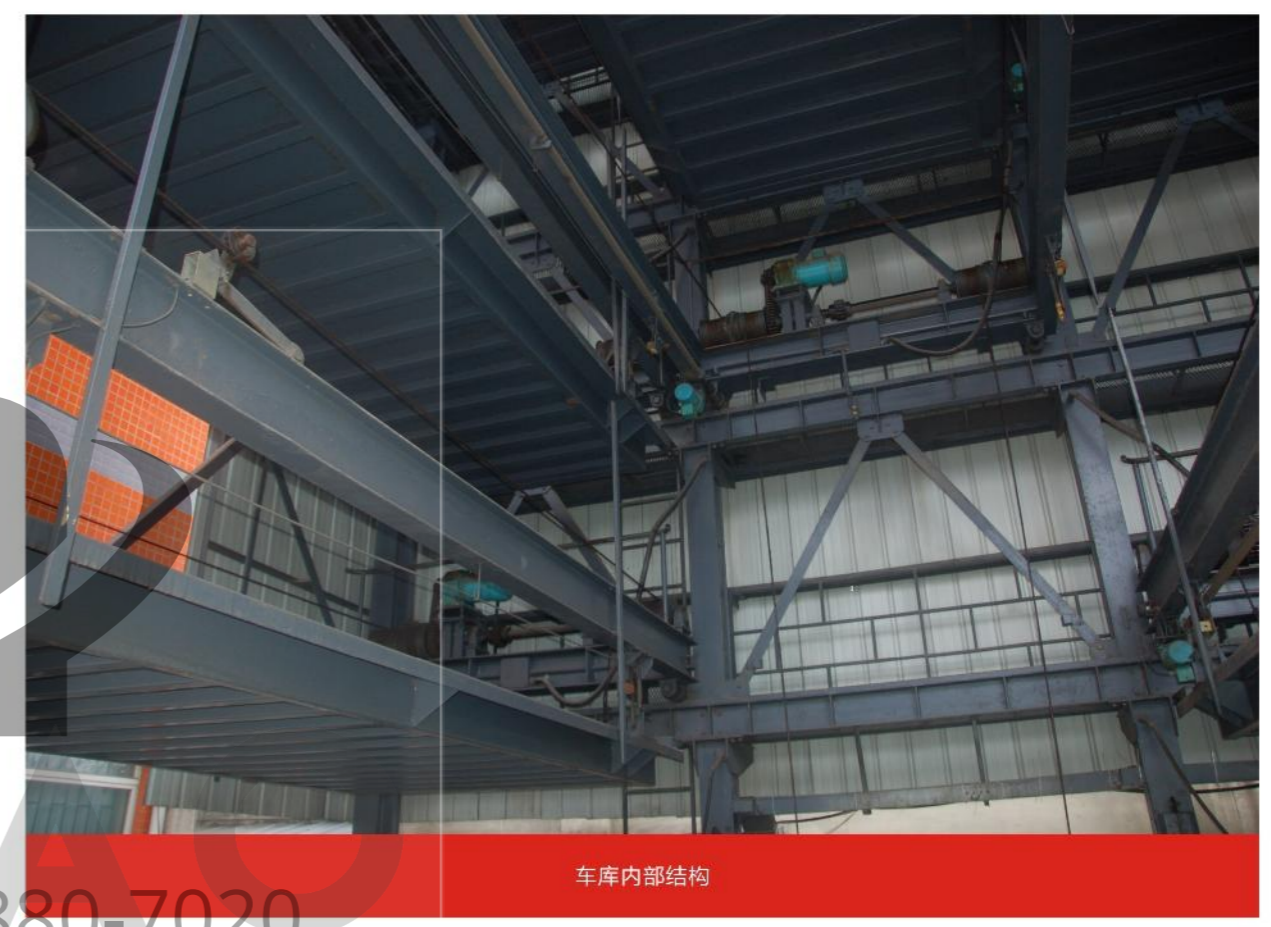


## 八层升降横移式 Eight-Deck Sideways-Moving and Lifting Type

- ① 多层升降横移式停车设备，可以创造多层停车位，就同类型设备而言，空间利用率更高。  
Multi-deck parking facility can create more parking space with higher space utilization rate.
- ② 直接于地面架设，布置较为简单，施工期短。  
Directly installed on ground, easy for construction, saving construction time.
- ③ 安全系数大，系统具有以下安全保护装置：  
防坠落装置、紧急停止按钮，超限运行防止装置、前后光电超长检测、超高检测报警装置。  
Safety highly guaranteed. The system has the following safety protection devices: fall prevention, urgent stop button, beyond limit running prevention, front and rear improper parking photoelectric detection, over-height detection and alarm.



## 八层升降横移式 Eight-Deck Sideways-Moving and Lifting Type



### 八层升降横移式车库主要参数 Eighth Deck Basic Parameters

型号	type	PSH D-GD	
驱动方式	Drive mode	电机钢丝绳 Motor Tightwire	
适停车辆尺寸	Parking Vehicle Dimensions	5000mm(L)×1850mm(W)×1550mm(H)	
适停车辆重量	Parking Vehicle Weight	2000KG	
操作方式	Operation Mode	按键 / 刷卡 Btton / Card	
电源 Power Supply	动力 Power	AC 3Φ 380V (50HZ)	
	照明 lighting	AC 1Φ 220V (50HZ)	
电动机 Motor	升降 Lifting	功率 Power	第2、3层 Second、Thir Deck 2.2KW 第4、5、6、7、8层 Fourth、Fifth、Sixth、Seventh、Eighth Deck 3.7KW
		速度范围 Speed Range	第2、3层 Second、Thir Deck 4.4m/min 第4、5、6、7、8层 Fourth、Fifth、Sixth、Seventh、Eighth Deck 6.6m/min
	横移 Sideways-Moving	功率 Power	第1层 Ground Deck 0.2KW 第2、3、4、5、7、8层 Second、Thir、Fourth、Fifth Seventh、Eighth Deck 0.4KW
		速度范围 Speed Range	速度范围 Speed Range : 6.8m/min
平均存取车时间	Average Parking / Taking Time	≤95秒 (Sec)	

CM-1 8





## 塔式车库 Tower Type Parking System

- 1 占地少，车库容量大，可实现高密度停车需求，大大提高土地使用率。  
Parking more cars in less spaces.
- 2 采用梳齿型交换技术，存取车速度快。  
Parking and carry out the car in short time.
- 3 驾驶人员只需要将车停到出入口车位即可离开，实现管理智能化。  
Manage the cars intelligently with auto park system.
- 4 系统可自动识别进入车库内人员，无人时系统方可启动，安全可靠。  
Safety device with automatic recognition system.
- 5 车库与主体建筑可以融为一体，外形美观。  
The tower can be build and design same with the main building.



垂直升降类立体停车设备，又称塔式车库，采用与电梯类似的原理与结构，司机只需要将车停到出入口车位，汽车升降机将自动把车辆提升并搬运到最近的空车位，完成整个停车过程。  
本设备可以满足地上高达20层车库的使用要求，实现自动化快速安全存取车。特别适用于城市小面积高密度停车。

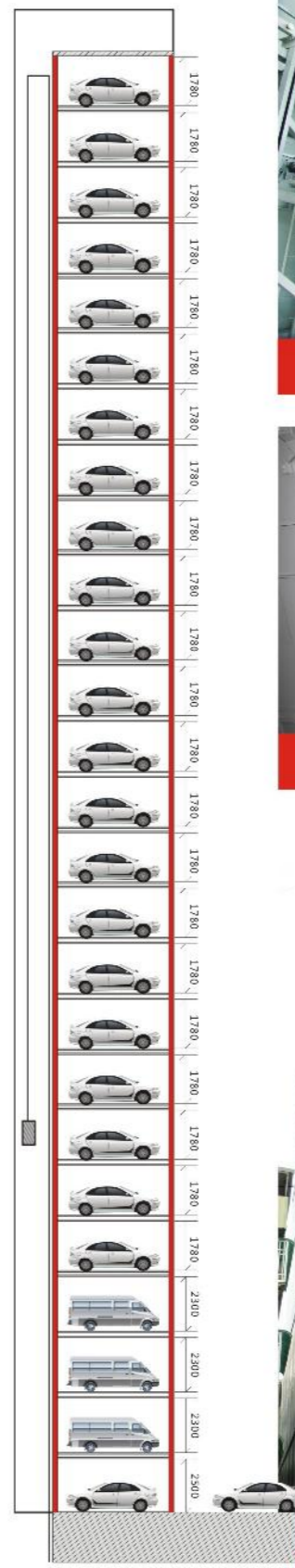
Tower type parking system used as elevator principle method, the driver park the car at the exit/in door, the elevator will lift up and park automatically. Tower type of parking system can build up to 20 stories, suitable for the main city where short of place for parking.

分类		Class		G类(class)	L类(class)	XL类(class)
方式		Modet		电梯叉取 Forking to elevator		
规格	Specifications	长度	Length	5050mm	5050mm	5300mm
		宽度	Width	1950mm	2050mm	2100mm
		高度	Height	1550mm	1550mm	1550mm
		重量	Weight	1600Kg	1850Kg	2300Kg
停车数量		Parking Capacity		10-50辆/套 Drive modet		
驱动装置	升降	Lifting	驱动方式	Power	链条传动	Chain transmission
			电动机功率	Motor power	18.5Kw/22Kw	
			速度	Speed	max 90m/min	
	横移	Sideways-moving	驱动方式	Drive modet	链条传动	Chain transmission
			电动机	Motor	停车架-0.2Kw 中央部分-0.4Kw	Parking rack-0.2Kw Center part-0.4Kw
			速度	Speed	26m/min	
控制方式及电源		Control Mode and Power Supply		电动机	变频专用电机	Frequency conversion motor
				控制方式	PLC自动控制	PLC automatic control
				安全装置	行程越限、安全光电	Travel out of limit alarm safety photoelectric detection
				操作方式	触摸屏/ID卡	Touch screen/ID card
				电源	AC3Φ380V(50HZ)	

## 塔式车库 Tower Type



CM-1 9





### 全自动仓储式停车库 Automatic Storage Type Parking System

### 全自动仓储式停车库 Automatic Storage Type Parking System

#### 特点 Features

- 1 驾驶员只需将车开入存取车室或将车开走，剩下的动作全部由设备完成，存取车速度快，自动化程度高。  
The drivers park/take the car at the exit/in door, the carrier will park or carry out the car automatically with short time.
- 2 可以用于地上及地下车库，实现由百台到上千台规模的大容量停车。  
Storage type can be build and design inside the building or basement, it can park in few hundreds of cars.
- 3 全封闭式建造、存取车安全性好。  
Building design with closed type, safe for parking.
- 4 具有节省空间、设计灵活、造型多样、投资少、成本及保养费用低，控制操作方便等特点。  
Save the space, small investment, low maintenance cost and easy for control.
- 5 设有多重安全防护措施，存取车室设有车辆超高、超长、超宽检知装置，确保人车安全。  
Multiple safety device, to protect driver and cars.
- 6 操作简便，既可集中管理，又可由客户自己操作。  
Easy for control and manage.
- 7 清洁环保，车库内无汽车废气。  
Environmental protection good, no cars exhaust in the parking place.



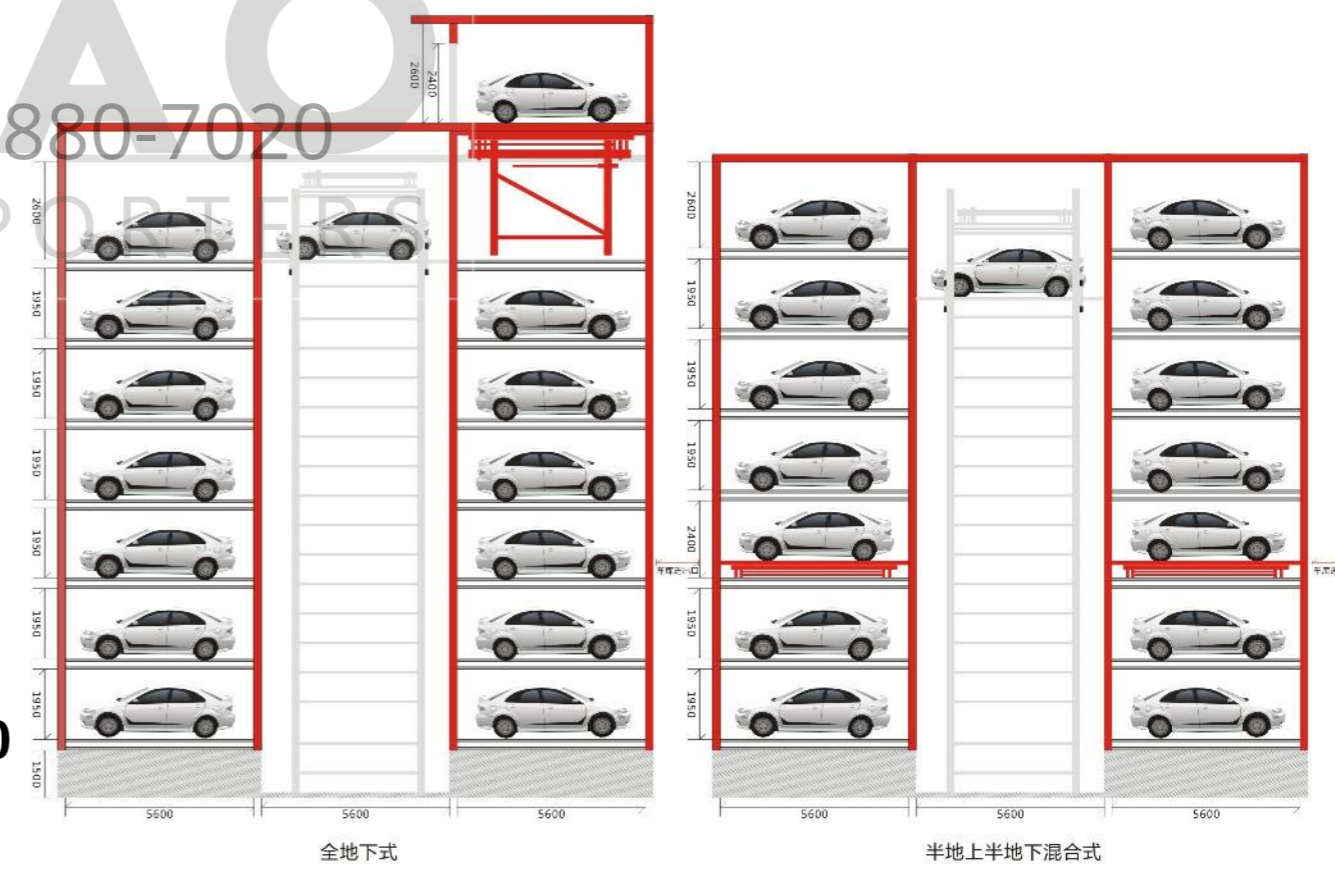
平面移动类立体停车设备，又称全自动仓储式车库，自动化程度高，空间利用合理使用方便，采用自动仓储原理，通过升降机构及存取车搬运器，将载车板及车辆由入口地面层下降或上升到指定层，再由存取车搬运器横向移动，将车辆存（取）到设定的车位上。

Automatic storage types parking systems is parking and carry out the car with the carrier automatically process.

+ (86) 186-8880-7020

技术参数 Technology parameters			
容车尺寸 Car capacity	长 Length	5400mm以下	
	宽 Width	2000mm以下	
	高 Height	1550mm以下	
	重量 Weight	2500Kg以下	
升降装置 lifting	电动机 motor	30KW	
旋转装置 circumsolve	升降速度 lifting speed	60M/min	
	电动机 motor	2.2Kw	
行走装置 横移装置 traveling side movin	电动机 motor	1.5Kw	
	升降电机 Lifting motor	80M/min	
台车存取车装置 Design Dimensions	电动机 motor	0.75Kw	
	升降速度 lifting speed	30M/min	
操作方式 control method	刷卡or遥控+触摸屏 PLCor remote control touch screen		
电源 power	Ac380v50hz		

### CM-1 10





全自动仓储式停车库 Automatic Storage Type Parking System

全自动仓储式平面移动类立体停车设备【平板式（横列）】



全自动仓储式平面移动类立体停车设备【平板式（横列）】



存取车搬运器



车库内部结构



通过搬运器取车



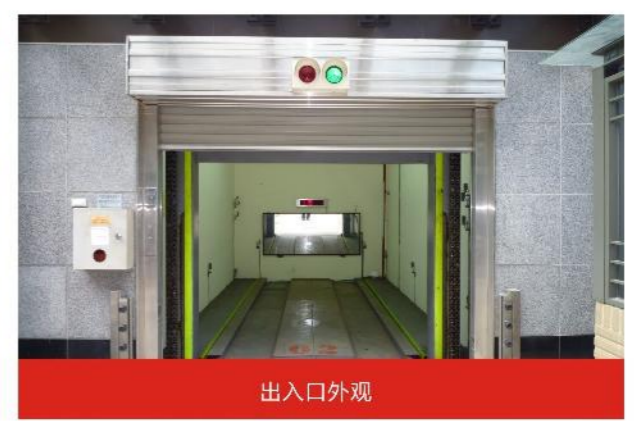
在车库出入口自动调整车辆方向

全自动仓储式停车库 Automatic Storage Type Parking System

全自动仓储式平面移动类立体停车设备【平板式（纵列）】



全自动仓储式平面移动类立体停车设备【平板式（纵列）】



出入口外观



出入口升降机构



搬运器取车



调整车辆方向



升上车库出入口

+86) 186-8880-7020  
IMPORTERS EXPORTERS

CM-1 11



全自动仓储式停车库 Automatic Storage Type Parking System

全自动仓储平面移动类立体停车设备【梳齿式】



全自动仓储平面移动类立体停车设备【梳齿式】

全自动仓储式停车库 Automatic Storage Type Parking System

全自动仓储平面移动类立体停车设备【抱轮式】



全自动仓储平面移动类立体停车设备【抱轮式】



抱轮式取车搬运器



梳齿取车搬运器



库内车辆停放

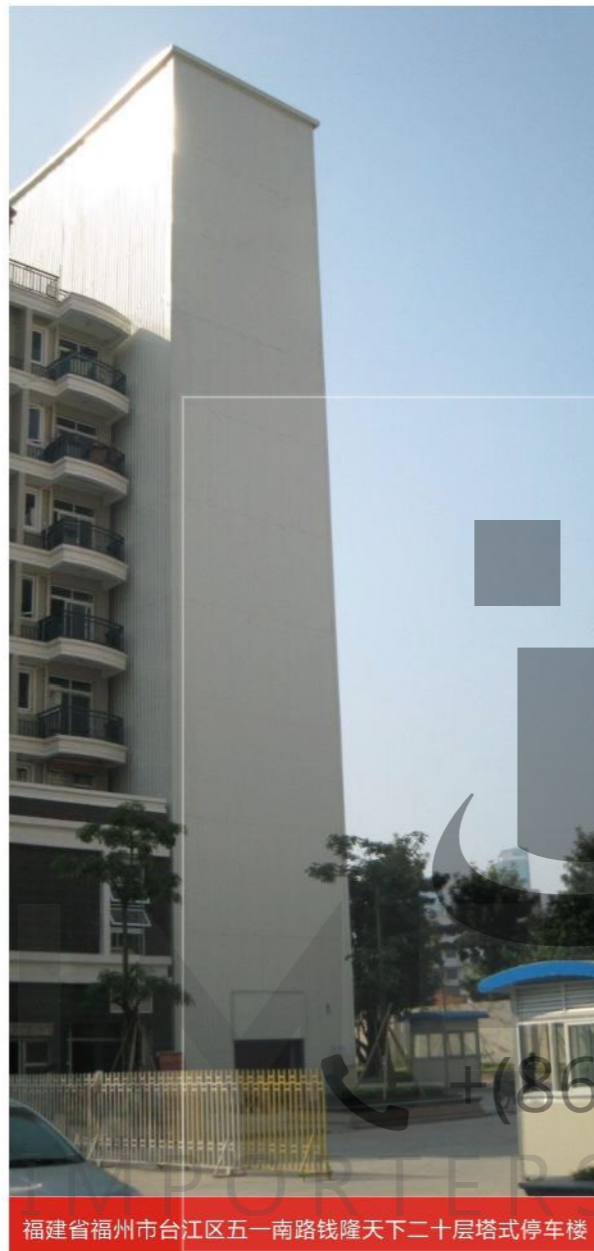
+ (86) 186-8880-7020

CM-1 12





广东省人民广播电台的机械式立体车库现场



福建省福州市台江区五一南路钱隆天下二十层塔式停车楼



湖南省岳阳沃尔玛广场三层车库



阿拉伯联合酋长国迪拜的机械车库现场



四立柱简易升降车库—广西柳州阳光100城市广场



佛山市禅城区双城尚都项目的机械式立体车库现场



东海名都小区十一层车库1



广州市海员宾馆3层两重列车库

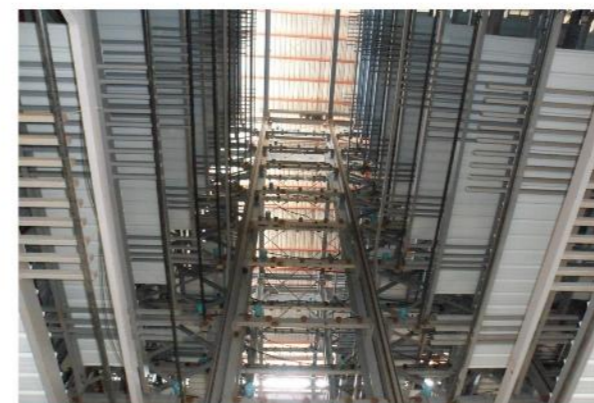


广东省第二中医院的机械式立体车库现场



三层升降横移车库

**CM-1 13**



东海名都小区十一层车库2



佛山市富景花园地下停车库





佛山市理想家园十层停车库



广州市尚德大厦两层地下停车库



佛山市雄峰汽车城三层升降横移车库



佛山海景蓝湾地下停车场

我们在设备制造销售领域的每一点进步都离不开客户宝贵的建议和意见，尊重、关心我们的客户是我们应尽的义务，我们将以百倍努力为客户服务！

We in the equipment manufacturing sales field every bit of progress is inseparable from the customers valuable Suggestions and opinions, respect, care for our customers is our duty, and we will be one hundred times as hard for the customer service!

## 1

### 质量承诺

Quality acceptance

- (1) 公司承诺所有产品从原材料采购至生产过程，均严格按照合同要求及国家标准进行，杜绝提交不合格产品。
- (2) 对于客户提出的质量问题，公司及时给予合理解释并进行整改。

- (1) the company promises from raw materials procurement to all the products of the production process, strictly according to contract requirements and national standards, and put an end to submit unqualified products.
- (2) Put forward for the customer to the quality problem, the company promptly reasonable explanation and the improvement.

## 2

### 质保期的服务承诺

The guarantee period of service commitment

- (1) 产品质保期1年。签订合同时将根据不同的产品在合同中有详细的保修约定，以合同中约定为准。
- (2) 服务宗旨：快速、果断、准确、周到、用户第一；我们的服务工作始终贯穿于设计、制造、交货、安装、调试、验收、使用、质保期后的维护保养全过程！
- (3) 服务目标：用服务质量赢得用户的满意。服务人员到达用户现场，须语言礼貌、态度和蔼，多看多想、多沟通多办事。

- (1) The product quality assurance period 1 year. When signing a contract according to different products in the contract with detailed warranty agreed to in the contract, shall prevail.
- (2) The service tenet: quick, decisive, considerate, user first; Our service is always running through in the design, manufacture, delivery, installation, debugging, acceptance, use, quality assurance period after the whole process maintenance.
- (3) Service goals: service quality to win the user satisfaction. Service personnel to the customer site, must be language, be nice manners, too much to bear, more communication handle matters.

## 3

### 质保期内质量处理承诺

The warranty period quality processing commitment

售后人员到现场及时判断事故原因，迅速给出解决问题的方案，能及时处理的，马上处理，不能及时处理的经客户同意，采取一切可以实行的措施，尽量保证设备运行。若确实需更换的零配件或设备，我们承诺无条件更换，质保期内更换零配件均免费（用户方人为造成的损坏及易损件除外）。

After-sales personnel to the timely judge the cause of the accident, are quickly solve problems, can handle in time, immediately processing, cannot be handled in time by the customer agrees to, to take all measures that can, try to ensure that the operation of equipment. If you really really need to change of spare parts or equipment, we promise unconditional replacement, the warranty period replacement parts are free (user party man-made damage and wearing parts except).

## 4

### 质保期后的服务承诺

After the warranty service commitment

- (1) 免费指导：用户操作人员可与公司联系获得维修、保养方面的指引。
- (2) 定期回访：我们将为用户提供终身全过程跟踪服务。
- (3) 易损零配件供应：质保期后，以质优价廉的配套零配件回馈新老客户。

- (1) Free guidance: user operations personnel can contact our company get service, and maintenance of guidelines.
- (2) Visit: we will provide users with lifelong follow-up services.
- (3) Vulnerability spare parts supply: after the warranty, with high quality and low price, supporting parts feedback the new old customer.





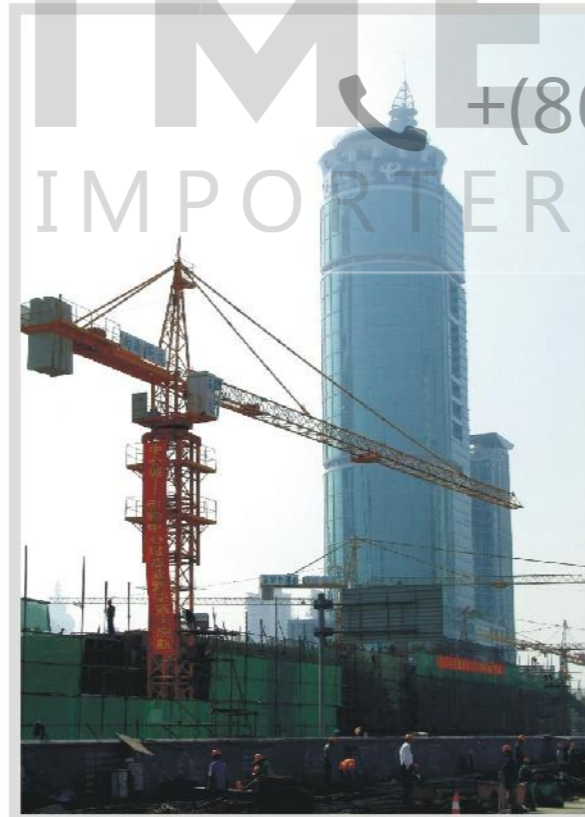
Project examples  
工程实例

IMEXAO  
+ (86) 186-8880-7020  
IMPORTERS EXPORTERS



CM-1 130722-+ |n-|+-4-5



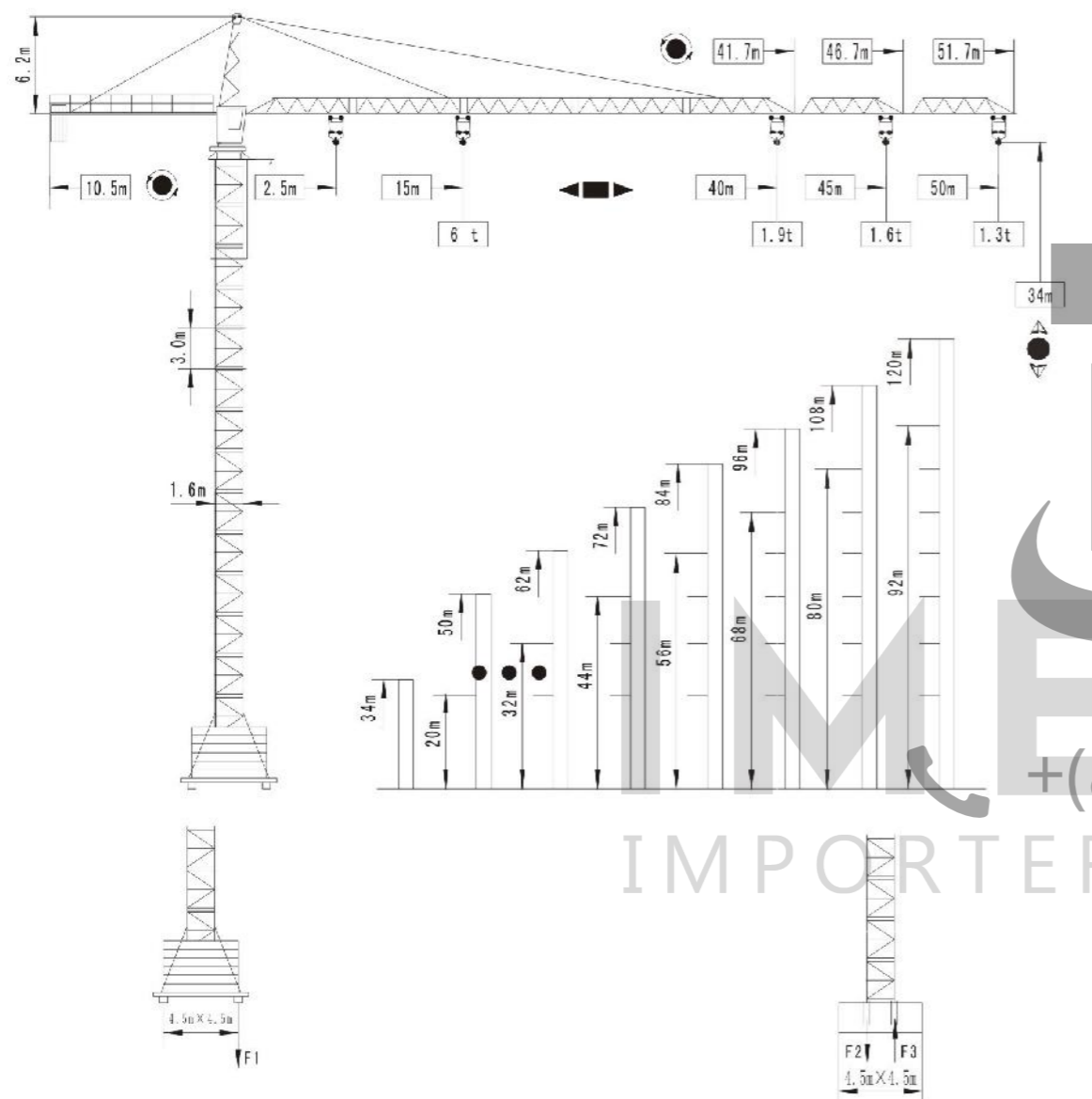


**IMEXAO**  
+ (86) 186-8880-7020  
IMPORTERS EXPORTERS



自升塔式起重机 Self-Raising Tower Crane

QTZ60 (TC5013)



F1	◆ 70t	□ 90t
	60t	

F2	◆ 66t	□ 82t	
F3	◆ 50t	□ 70t	40t

F 反力	◆ 工作工况	自重
	□ 非工作工况	

自升塔式起重机 Self-Raising Tower Crane

QTZ60(5013)

载荷特性

● 组合臂长50m时  
工作幅度2.5~15

16	18	20	22	24	26	28	30	32	34	36	38	40	42	44	46	48	50	
3.00	3.00	3.00	3.00	3.00	3.00	3.00	2.84	2.61	2.40	2.22	2.06	1.91	1.79	1.67	1.56	1.47	1.38	1.30
6.00	5.53	4.81	4.23	3.77	3.39	3.07	2.79	2.56	2.35	2.17	2.01	1.86	1.74	1.62	1.51	1.42	1.33	1.25

● 组合臂长45m时  
工作幅度2.5~15

16	18	20	22	24	26	28	30	32	34	36	38	40	42	44	45	
3.00	3.00	3.00	3.00	3.00	3.00	3.00	2.98	2.73	2.52	2.33	2.16	2.02	1.88	1.76	1.65	1.60
6.00	5.78	5.02	4.43	3.95	3.55	3.22	2.93	2.68	2.47	2.28	2.11	1.97	1.83	1.71	1.60	1.55

● 组合臂长40m时  
工作幅度2.5~15

16	18	20	22	24	26	28	30	32	34	36	38	40	
3.00	3.00	3.00	3.00	3.00	3.00	3.00	3.00	2.76	2.54	2.35	2.18	2.03	1.90
6.00	5.82	5.07	4.47	3.98	3.58	3.24	2.96	2.71	2.49	2.30	2.13	1.98	1.85

机构特性

起升		m/min	9	39	80	4.5	19.5	40	kW	
		t	3	3	1.5	6	6	3	24	360m
变幅		m/min	40/20				3.3/2.2			
回转		r/min	0~0.6				2×2.2			
顶升		m/min	0.5				7.5			
电源			380V/50HZ							
供电容量							41			

本公司保留对产品进行更新、改进的权利。用户所购产品的某些结构或参数可能与本产品样本不符，敬请留意，并请与我们联系。

The Company reserves its rights to update or improve the product. Some structures or parameters of the product the user purchased might not conform to this operating instruction manual. If any, please contact the company immediately.

本公司保留对产品进行更新、改进的权利。用户所购产品的某些结构或参数可能与本产品样本不符，敬请留意，并请与我们联系。  
The Company reserves its rights to update or improve the product. Some structures or parameters of the product the user purchased might not conform to this operating instruction manual. If any, please contact the Company immediately.

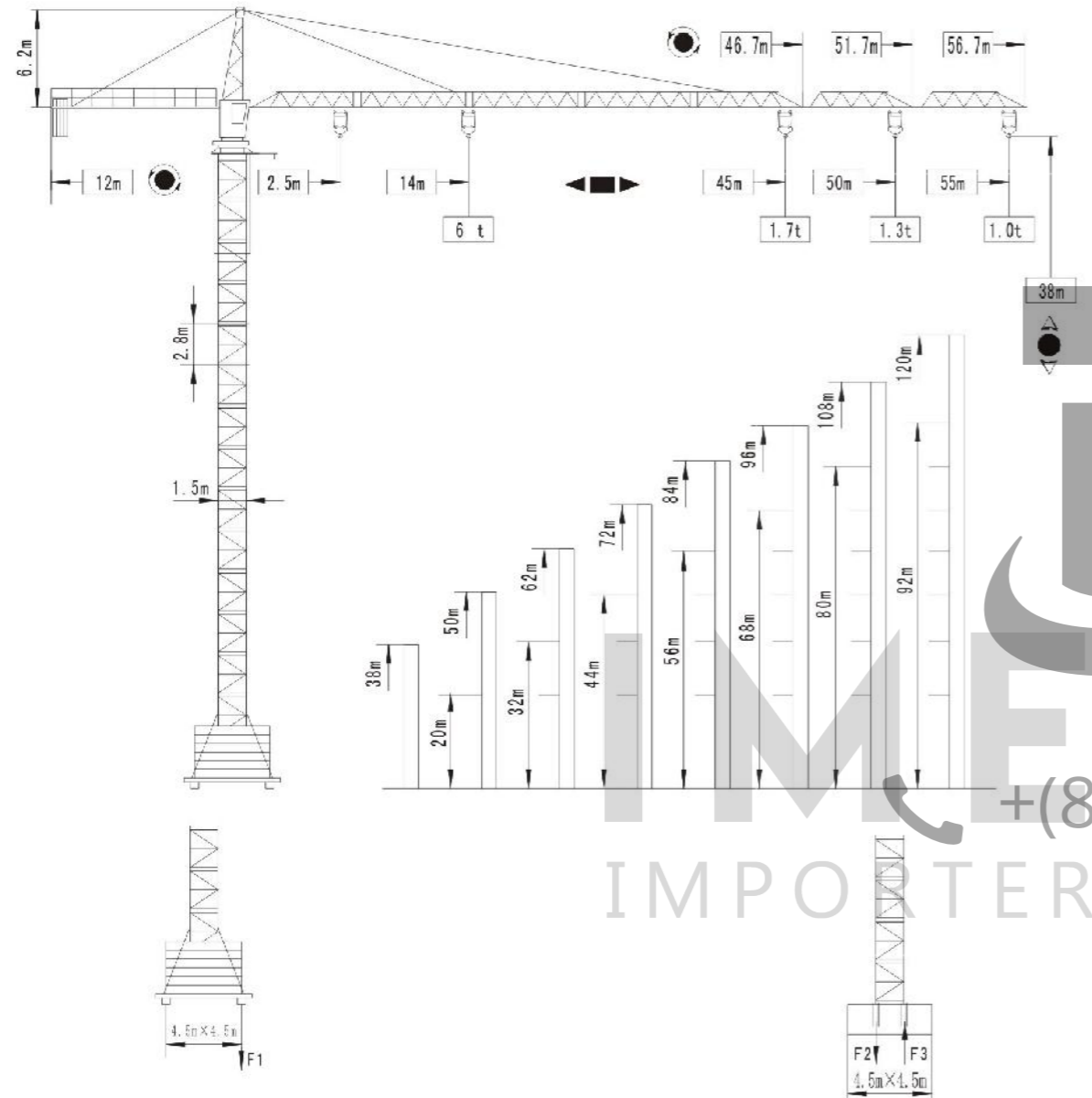


自升塔式起重机 Self-Raising Tower Crane

**QTZ63(5510)**

自升塔式起重机 Self-Raising Tower Crane

**QTZ63(5510)**



载荷特性

● 组合臂长55m时  
 工作幅度2.5~14

16	18	20	22	24	26	28	30	32	34	36	38	40	42	44	46	48	50	52	54	55	
6.00	5.12	4.45	3.92	3.50	3.14	2.84	2.59	2.37	2.18	2.00	1.86	1.73	1.61	1.50	1.41	1.32	1.24	1.16	1.09	1.03	1.00
3.00	3.00	3.00	3.00	3.00	3.00	2.86	2.61	2.39	2.20	2.02	1.88	1.75	1.63	1.52	1.43	1.34	1.26	1.18	1.11	1.05	1.02

● 组合臂长50m时  
 工作幅度2.5~15

16	18	20	22	24	26	28	30	32	34	36	38	40	42	44	46	48	50	
6.00	5.56	4.85	4.28	3.82	3.43	3.11	2.84	2.60	2.40	2.22	2.06	1.91	1.79	1.67	1.56	1.47	1.38	1.30
3.00	3.00	3.00	3.00	3.00	3.00	3.00	2.86	2.62	2.42	2.24	2.08	1.93	1.81	1.69	1.58	1.49	1.40	1.32

● 组合臂长45m时  
 工作幅度2.5~16

18	20	22	24	26	28	30	32	34	36	38	40	42	44	45	
6.00	5.32	4.70	4.20	3.79	3.44	3.14	2.88	2.66	2.46	2.29	2.13	1.99	1.87	1.75	1.70
3.00	3.00	3.00	3.00	3.00	3.00	3.00	2.90	2.68	2.48	2.31	2.15	2.01	1.89	1.77	1.72

机构特性

起升		m/min	9	39	80	4.5	19.5	40	kW	
		t	3	3	1.5	6	6	3	24	360m
变幅		m/min	40/20						3.3/2.2	
回转		r/min	0~0.6						2×2.2	
顶升		m/min	0.5						7.5	
电源	380V/50HZ									
供电容量	41									

F1	◆ 58t	□ 68t	
	58t		
F2	◆ 76t	□ 102t	
F3	◆ 63t	□ 80t	53t
F 反力	◆ 工作工况	自重	
	□ 非工作工况		

本公司保留对产品进行更新、改进的权利。用户所购产品的某些结构或参数可能与本产品样本不符，敬请留意，并请与我们联系。

The Company reserves its rights to update or improve the product. Some structures or parameters of the product the user purchased might not conform to this operating instruction manual. If any, please contact the company immediately.

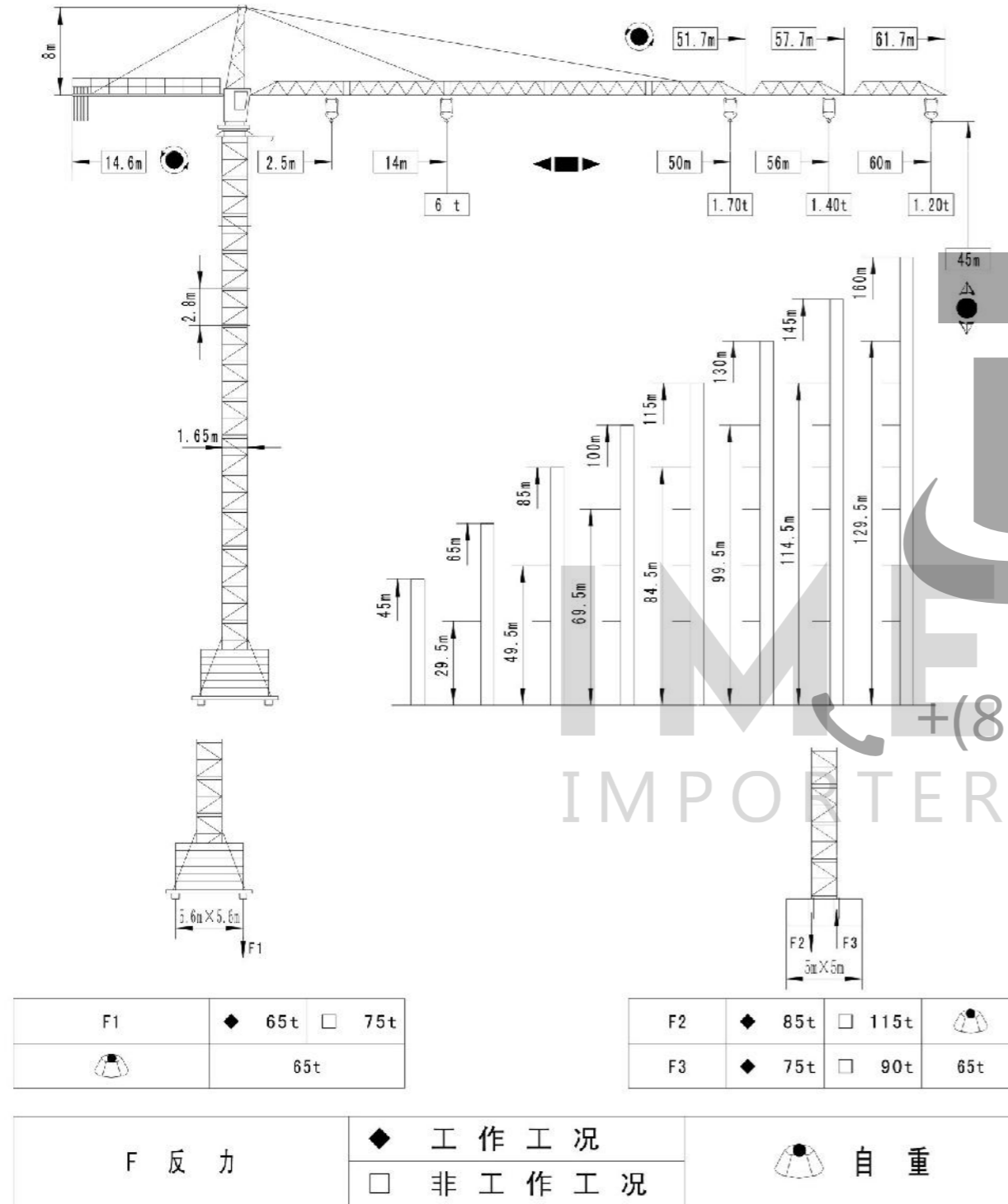
本公司保留对产品进行更新、改进的权利。用户所购产品的某些结构或参数可能与本产品样本不符，敬请留意，并请与我们联系。

The Company reserves its rights to update or improve the product. Some structures or parameters of the product the user purchased might not conform to this operating instruction manual. If any, please contact the company immediately.



自升塔式起重机 Self-Raising Tower Crane

QTZ80 (6012)



自升塔式起重机 Self-Raising Tower Crane

QTZ80 (6012)

载荷特性

● 组合臂长60m时		2.5	17	18	20	22	24	26	28	30	32	34	36	38	40	42	44	46	48	50	52	54	56	58	60
工作幅度		6.00	5.61	4.96	4.43	4.00	3.63	3.32	3.05	2.82	2.61	2.34	2.27	2.12	1.99	1.87	1.76	1.66	1.57	1.48	1.40	1.33	1.26	1.20	
		3.00	3.00	3.00	3.00	3.00	3.00	3.00	3.00	2.84	2.63	2.36	2.29	2.14	2.01	1.89	1.78	1.68	1.59	1.50	1.42	1.35	1.26	1.22	

● 组合臂长56m时		2.5	17.6	18	20	22	24	26	28	30	32	34	36	38	40	42	44	46	48	50	52	54	56
工作幅度		6.00	5.83	5.16	4.62	4.16	3.79	3.46	3.18	2.94	2.73	2.54	2.37	2.22	2.08	1.96	1.84	1.74	1.64	1.56	1.48	1.40	
		3.00	3.00	3.00	3.00	3.00	3.00	3.00	3.00	2.96	2.75	2.56	2.39	2.24	2.10	1.98	1.86	1.76	1.66	1.58	1.50	1.42	

● 组合臂长50m时		2.5	18	20	22	24	26	28	30	32	34	36	38	40	42	44	46	48	50
工作幅度		6.00	5.30	4.74	4.28	3.89	3.56	3.28	3.03	2.81	2.62	2.44	2.29	2.15	2.02	1.90	1.80	1.70	
		3.00	3.00	3.00	3.00	3.00	3.00	3.00	3.00	2.84	2.64	2.46	2.31	2.17	2.04	1.92	1.82	1.72	

机构特性

起升		m/min	9	39	80	4.5	19.5	40	kW		24	360m
变幅		m/min	40/20		3.3/2.2							
回转		r/min	0~0.6		2×3.7							
顶升		m/min	0.5		7.5							
电源	380V/50HZ											
供电容量	43											

本公司保留对产品进行更新、改进的权利. 用户所购产品的某些结构或参数可能与本产品样本不符, 敬请留意, 并请与我们联系.

The Company reserves its rights to update or improve the product. Some structures or parameters of the product the user purchased might not conform to this operating instruction manual. If any, please contact the company immediately.

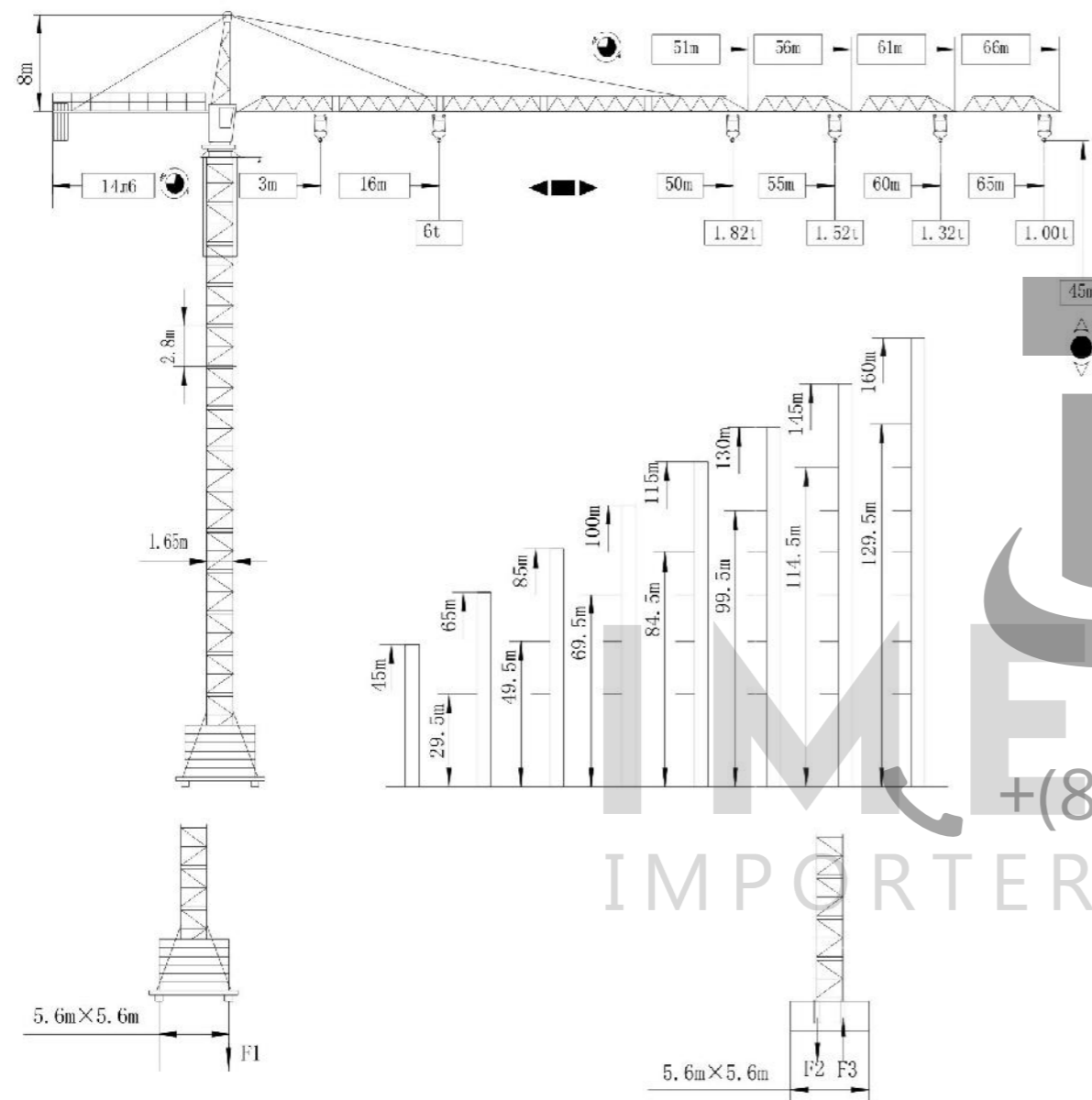
本公司保留对产品进行更新、改进的权利. 用户所购产品的某些结构或参数可能与本产品样本不符, 敬请留意, 并请与我们联系.

The Company reserves its rights to update or improve the product. Some structures or parameters of the product the user purchased might not conform to this operating instruction manual. If any, please contact the company immediately.



自升塔式起重机 Self-Raising Tower Crane

**QTZ80 (6510)**



F1	◆ 70t	□ 120t
	70t	

F2	◆ 95t	□ 135t	
F3	◆ 80t	□ 100t	71t

F 反力 F Reverse Force	◆ 工作工况 Work Condition □ 非工作工况 Not Work Condition	自重 Deadweight
-------------------------	---	------------------

自升塔式起重机 Self-Raising Tower Crane

**QTZ80 (6510)**

载荷特性 Load Characteristics

● 组合臂长65m时 In case the length of compound jib is 65m

工作幅度 Working radius 2.5~	16	18	20	22	24	26	28	30	32	34	36	38	40	42	44	46	48	50	52	54	56	58	60	62	64	65
	6.00	5.40	4.76	4.25	3.64	3.48	3.17	2.91	2.68	2.48	2.30	2.15	2.01	1.88	1.76	1.66	1.56	1.47	1.39	1.31	1.24	1.18	1.11	1.06	1.00	0.98
	3.00	3.00	3.00	3.00	3.00	3.00	3.00	2.93	2.70	2.50	2.32	2.17	2.03	1.90	1.78	1.68	1.58	1.49	1.41	1.33	1.26	1.20	1.13	1.08	1.02	1.00

● 组合臂长60m时 In case the length of compound jib is 60m

工作幅度 Working radius 2.5~	18	20	22	24	26	28	30	32	34	36	38	40	42	44	46	48	50	52	54	56	58	60
	6.00	5.30	4.73	4.27	3.88	3.55	3.26	3.02	2.80	2.60	2.43	2.27	2.13	2.00	1.89	1.78	1.69	1.60	1.52	1.44	1.37	1.30
	3.00	3.00	3.00	3.00	3.00	3.00	3.00	3.00	2.82	2.62	2.45	2.29	2.15	2.02	1.91	1.80	1.71	1.62	1.54	1.46	1.39	1.32

● 组合臂长55m时 In case the length of compound jib is 55m

工作幅度 Working radius 2.5~	18	20	22	24	26	28	30	32	34	36	38	40	42	44	46	48	50	52	54	55
	6.00	5.36	4.80	4.33	3.93	3.60	3.31	3.06	2.84	2.64	2.46	2.31	2.17	2.04	1.92	1.81	1.71	1.62	1.54	1.50
	3.00	3.00	3.00	3.00	3.00	3.00	3.00	3.00	2.86	2.66	2.48	2.33	2.19	2.06	1.94	1.83	1.73	1.64	1.56	1.52

● 组合臂长50m时 In case the length of compound jib is 50m

工作幅度 Working radius 2.5~	19	20	22	24	26	28	30	32	34	36	38	40	42	44	46	48	50
	6.00	5.59	5.00	4.51	4.10	3.75	3.45	3.19	2.96	2.76	2.58	2.42	2.27	2.13	2.00	1.90	1.80
	3.00	3.00	3.00	3.00	3.00	3.00	3.00	3.00	2.98	2.78	2.60	2.44	2.29	2.15	2.02	1.92	1.82

机构特性 Mechanism Characteristics

起升Hoisting		m/min t	6~40 6	6~80 3	kW	37		360m
变幅Derricking		m/min	60/30/9		5/3.7/1.1			
回转Slewing		r/min	0~0.6		2×3.3			
顶升Jacking		m/min	0.5		7.5			
电源Power Supply			380V/50HZ					
供电容量Power Capacity					57			

本公司保留对产品进行更新、改进的权利。用户所购产品的某些结构或参数可能与本产品样本不符，敬请留意，并请与我们联系。

The Company reserves its rights to update or improve the product. Some structures or parameters of the product the user purchased might not conform to this operating instruction manual. If any, please contact the company immediately.

本公司保留对产品进行更新、改进的权利。用户所购产品的某些结构或参数可能与本产品样本不符，敬请留意，并请与我们联系。

The Company reserves its rights to update or improve the product. Some structures or parameters of the product the user purchased might not conform to this operating instruction manual. If any, please contact the company immediately.

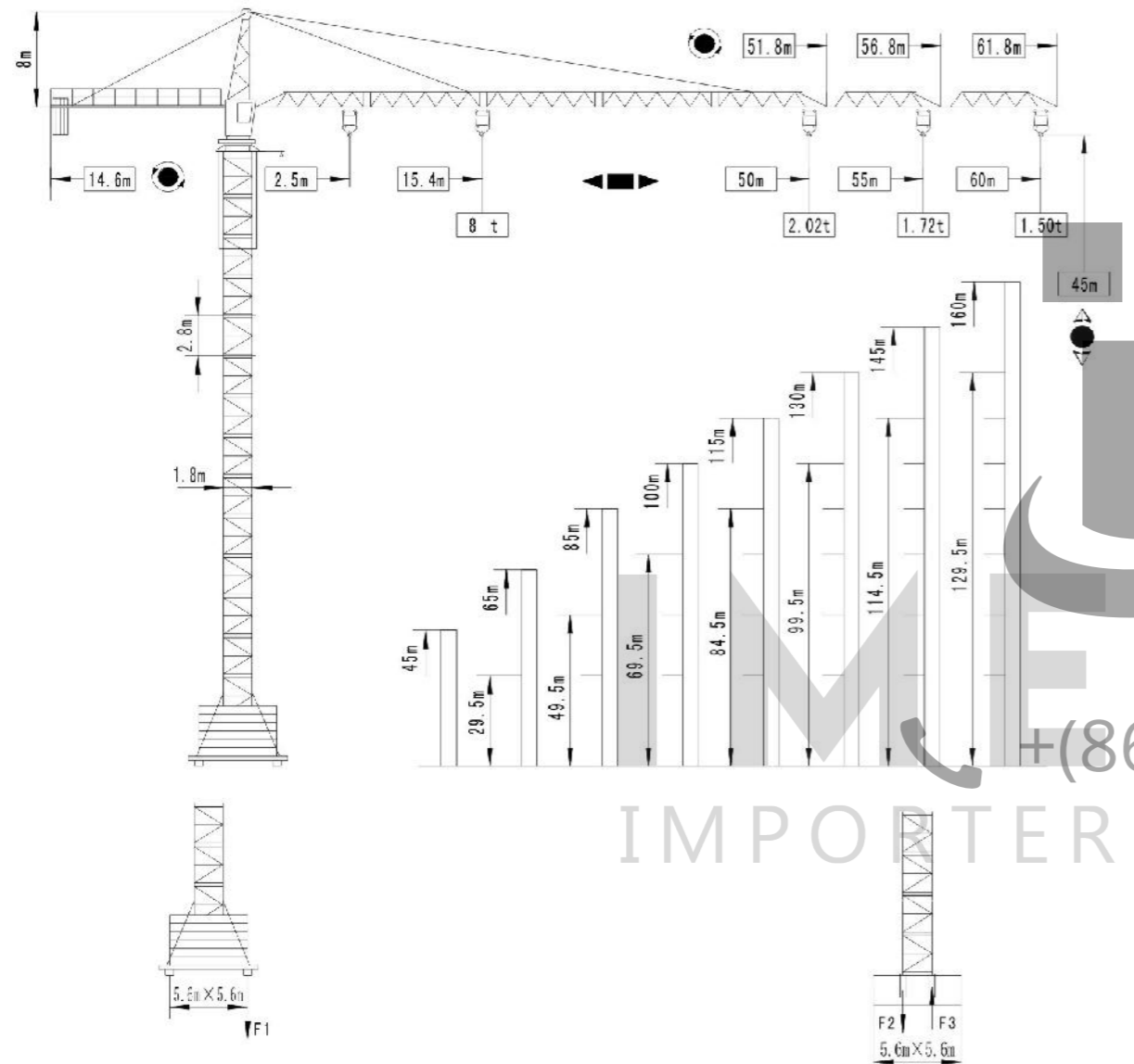


自升塔式起重机 Self-Raising Tower Crane

QTZ100 (6015)

自升塔式起重机 Self-Raising Tower Crane

QTZ100 (6015)



载荷特性

● 组合臂长60m时  
 工作幅度 2.5~

15	4	16	18	20	22	24	26	28	30	32	34	36	38	40	42	44	46	48	50	52	54	56	58	60
8.00	7.65	6.68	5.92	5.30	4.78	4.35	3.99	3.67	3.40	3.15	2.94	2.75	2.58	2.42	2.28	2.15	2.04	1.93	1.83	1.74	1.65	1.57	1.50	
4.00	4.00	4.00	4.00	4.00	4.00	4.00	4.00	3.69	3.42	3.17	2.96	2.77	2.60	2.44	2.30	2.17	2.06	1.95	1.85	1.76	1.67	1.59	1.52	

● 组合臂长55m时  
 工作幅度 2.5~

15	4	16	18	20	22	24	26	28	30	32	34	36	38	40	42	44	46	48	50	52	54	55
8.00	7.67	6.70	5.93	5.31	4.80	4.37	4.00	3.68	3.41	3.16	2.95	2.76	2.58	2.43	2.29	2.16	2.04	1.93	1.84	1.74	1.70	
4.00	4.00	4.00	4.00	4.00	4.00	4.00	4.00	3.70	3.43	3.18	2.97	2.78	2.60	2.45	2.31	2.18	2.06	1.95	1.86	1.76	1.72	

● 组合臂长50m时  
 工作幅度 2.5~

15	8	16	18	20	22	24	26	28	30	32	34	36	38	40	42	44	46	48	50				
8.00	7.69	6.89	6.10	5.46	4.94	4.49	4.12	3.79	3.51	3.26	3.04	2.84	2.67	2.51	2.36	2.23	2.11	2.00					
4.00	4.00	4.00	4.00	4.00	4.00	4.00	4.00	3.81	3.53	3.28	3.06	2.86	2.69	2.53	2.38	2.25	2.13	2.02					

机构特性

起升	m/min	6~40	6~80	3~20	3~40	kW	
变幅	t	4	2	8	4	30	400m
回转	m/min	60/30/9		5/3.7/1.1			
顶升	r/min	0~0.6		2×3.7			
电源	m/min	0.5		7.5			
供电容量		380V/50HZ					
				51			

F1	◆ 65t	□ 75t
	70t	
F2	◆ 90t	□ 130t
F3	◆ 75t	□ 95t
		64t

F 反力	◆ 工作工况	自重
	□ 非工作工况	

本公司保留对产品进行更新、改进的权利。用户所购产品的某些结构或参数可能与本产品样本不符，敬请留意，并请与我们联系。

The Company reserves its rights to update or improve the product. Some structures or parameters of the product the user purchased might not conform to this operating instruction manual. If any, please contact the company immediately.

本公司保留对产品进行更新、改进的权利。用户所购产品的某些结构或参数可能与本产品样本不符，敬请留意，并请与我们联系。

The Company reserves its rights to update or improve the product. Some structures or parameters of the product the user purchased might not conform to this operating instruction manual. If any, please contact the company immediately.

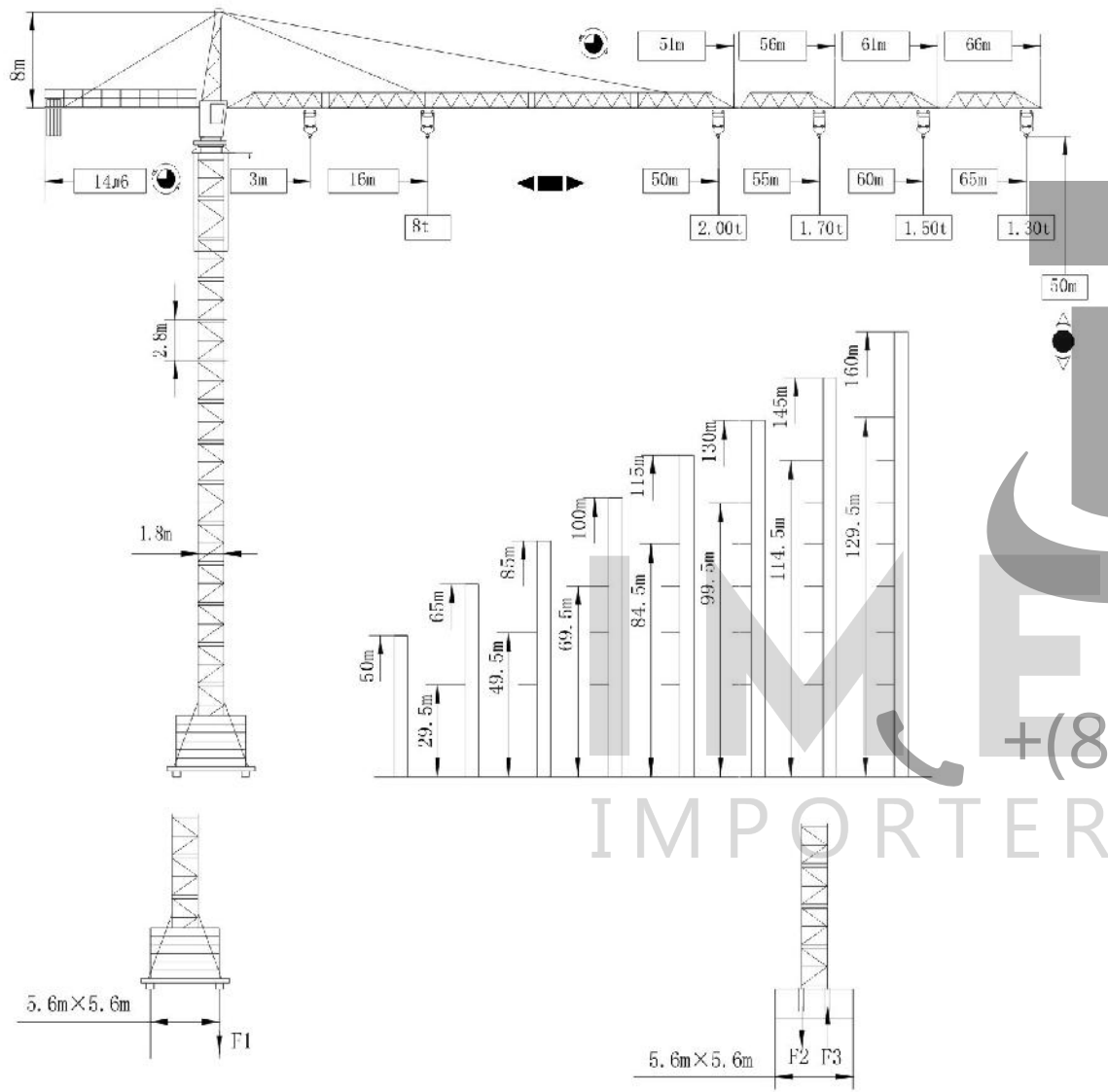



自升塔式起重机 Self-Raising Tower Crane


QTZ100 (6513)


自升塔式起重机 Self-Raising Tower Crane

QTZ100 (6513)



F1	◆ 70t	□ 120t
	70t	

F2	◆ 95t	□ 135t	
F3	◆ 80t	□ 100t	74t

F 反力 F Reverse Force	◆ 工作情况 Work Condition □ 非工作情况 Not Work Condition	 自重 Deadweight
-------------------------	---	--

载荷特性 Load Characteristics

● 组合臂长65m时 In case the length of compound jib is 65m

工作幅度 Working radius	2.5~	15.6	16	18	20	22	24	26	28	30	32	34	36	38	40	42	44	46	48	50	52	54	56	58	60	62	64	65
		8.00	7.82	6.79	6.00	5.36	4.83	4.39	4.01	3.68	3.43	3.15	2.93	2.73	2.55	2.39	2.25	2.11	1.99	1.88	1.78	1.68	1.60	1.52	1.44	1.37	1.30	1.27
		4.00	4.00	4.00	4.00	4.00	4.00	4.00	4.00	3.71	3.46	3.18	2.96	2.76	2.58	2.42	2.28	2.14	2.02	1.91	1.81	1.71	1.63	1.55	1.47	1.40	1.33	1.30

● 组合臂长60m时 In case the length of compound jib is 60m

工作幅度 Working radius	2.5~	16	18	20	22	24	26	28	30	32	34	36	38	40	42	44	46	48	50	52	54	56	58	60
		8.00	6.90	6.10	5.45	4.91	4.46	4.08	3.74	3.46	3.20	2.98	2.78	2.60	2.44	2.29	2.15	2.03	1.92	1.81	1.73	1.63	1.55	1.47
		4.00	4.00	4.00	4.00	4.00	4.00	3.77	3.49	3.23	3.01	2.81	2.63	2.47	2.32	2.18	2.06	1.95	1.84	1.75	1.66	1.58	1.50	






● 组合臂长55m时 In case the length of compound jib is 55m

工作幅度 Working radius	2.5~	16	18	20	22	24	26	28	30	32	34	36	38	40	42	44	46	48	50	52	54	55
		8.00	6.90	6.10	5.45	4.91	4.45	4.06	3.74	3.45	3.20	2.97	2.77	2.59	2.43	2.28	2.15	2.03	1.91	1.81	1.72	1.67
		4.00	4.00	4.00	4.00	4.00	4.00	3.77	3.48	3.23	3.00	2.80	2.61	2.45	2.31	2.18	2.06	1.94	1.84	1.75	1.70	

● 组合臂长50m时 In case the length of compound jib is 50m

工作幅度 Working radius	2.5~	16	18	20	22	24	26	28	30	32	34	36	38	40	42	44	46	48	50
		8.00	7.05	6.23	5.57	5.02	4.56	4.17	3.83	3.54	3.28	3.05	2.85	2.66	2.50	2.35	2.21	2.08	2.00
		4.00	4.00	4.00	4.00	4.00	4.00	3.86	3.57	3.31	3.08	2.88	2.69	2.53	2.38	2.24	2.11	1.97	

机构特性 Mechanism Characteristics

起升Hoisting		m/min	6~40	6~80	kW	
		t	8	4	37	400m
变幅Derricking		m/min	60/30/9		5/3.7/1.1	
回转Slewing		r/min	0~0.6		2×3.3	
顶升Jacking		m/min	0.5		7.5	
电源Power Supply	380V/50HZ					
供电容量Power Capacity	57					

本公司保留对产品进行更新、改进的权利。用户所购产品的某些结构或参数可能与本产品样本不符，敬请留意，并请与我们联系。

The Company reserves its rights to update or improve the product. Some structures or parameters of the product the user purchased might not conform to this operating instruction manual. If any, please contact the company immediately.

本公司保留对产品进行更新、改进的权利。用户所购产品的某些结构或参数可能与本产品样本不符，敬请留意，并请与我们联系。

The Company reserves its rights to update or improve the product. Some structures or parameters of the product the user purchased might not conform to this operating instruction manual. If any, please contact the company immediately.

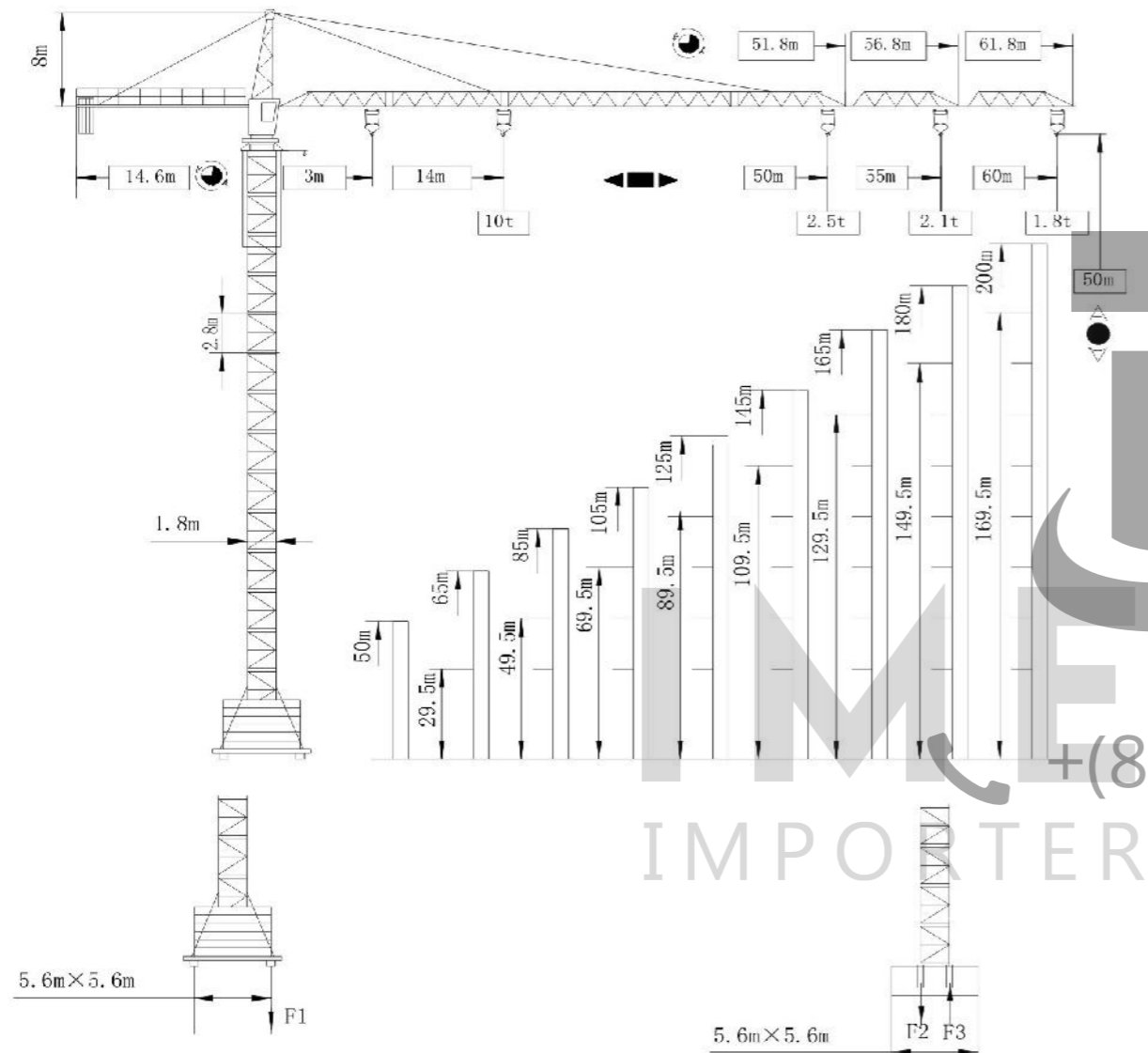


自升塔式起重机 Self-Raising Tower Crane

QTZ125 (6018)

自升塔式起重机 Self-Raising Tower Crane

QTZ125 (6018)



F1	◆ 90t	□ 114t
	77t	

F2	◆ 110t	□ 192t	
F3	◆ 66t	□ 150t	65t

F 反力 F Reverse Force	◆ 工作情况 Work Condition	自重 Deadweight
	□ 非工作情况 Not Work Condition	

载荷特性 Load Characteristics

● 组合臂长60m时 In case the length of compound jib is 60m

工作幅度 Working radius 2.5~

	13	16	18	20	22	24	26	28	30	32	34	36	38	40	42	44	46	48	50	52	54	56	58	60
10.00	9.40	8.19	7.24	6.57	5.83	5.29	4.84	4.44	4.10	3.80	3.54	3.30	3.09	2.89	2.72	2.56	2.41	2.28	2.16	2.04	1.94	1.84	1.75	
5.00	5.00	5.00	5.00	5.00	5.00	5.00	4.88	4.78	4.73	4.65	4.59	4.55	4.51	4.44	4.37	4.31	4.26	4.21	4.16	4.11	4.06	4.01	3.96	3.91

● 组合臂长60m时 In case the length of compound jib is 60m

工作幅度 Working radius 2.5~

	16	18	20	22	24	26	28	30	32	34	36	38	40	42	44	46	48	50	52	54	56
10.00	8.38	7.4	6.88	5.97	5.42	4.95	4.53	4.21	3.90	3.63	3.38	3.17	2.97	2.79	2.63	2.48	2.35	2.22	2.10	2.05	
5.00	5.00	5.00	5.00	5.00	5.00	5.00	4.60	4.26	3.95	3.68	3.43	3.22	3.02	2.84	2.68	2.53	2.40	2.27	2.15	2.10	

● 组合臂长60m时 In case the length of compound jib is 60m

工作幅度 Working radius 2.5~

	16	18	20	22	24	26	28	30	32	34	36	38	40	42	44	46	48	50
10.00	8.68	7.67	6.86	6.19	5.62	5.14	4.73	4.37	4.05	3.77	3.52	3.30	3.09	2.91	2.74	2.59	2.45	
5.00	5.00	5.00	5.00	5.00	5.00	5.00	4.78	4.42	4.10	3.82	3.57	3.35	3.14	2.96	2.79	2.64	2.50	

机构特性 Mechanism Characteristics

起升 Hoisting		m/min	0~100	0~50	kW	37		400m
		t	5	10				

变幅 Derricking		m/min	60/30/9	5/3.7/1.1
---------------	--	-------	---------	-----------

回转 Slewing		r/min	0~0.6	2×5.5
------------	--	-------	-------	-------

顶升 Jacking		m/min	0.5	7.5
------------	--	-------	-----	-----

电源 Power Supply	380V/50Hz
-----------------	-----------

供电容量 Power Capacity	61
---------------------	----

本公司保留对产品进行更新、改进的权利。用户所购产品的某些结构或参数可能与本产品样本不符，敬请留意，并请与我们联系。

The Company reserves its rights to update or improve the product. Some structures or parameters of the product the user purchased might not conform to this operating instruction manual. If any, please contact the company immediately.

本公司保留对产品进行更新、改进的权利。用户所购产品的某些结构或参数可能与本产品样本不符，敬请留意，并请与我们联系。

The Company reserves its rights to update or improve the product. Some structures or parameters of the product the user purchased might not conform to this operating instruction manual. If any, please contact the company immediately.



自升塔式起重机 Self-Raising Tower Crane

**QTZ160 (6516)**

自升塔式起重机 Self-Raising Tower Crane

**QTZ160 (6516)**

载荷特性 Load Characteristics

组合臂长65m时 In case the length of compound jib is 65m

工作幅度 Working radius	2.5	13	14	16	18	20	22	24	26	28	30	32	34	36	38	40	42	44	46	48	50	52	54	56	58	60	62	64	65
	12.00	1.00	9.42	8.20	7.25	6.48	5.84	5.30	4.84	4.45	4.11	3.81	3.54	3.30	3.09	2.90	2.72	2.56	2.42	2.29	2.16	2.05	1.94	1.84	1.75	1.67	1.59	1.53	
	6.00	6.00	6.00	6.00	6.00	6.00	5.89	5.35	4.89	4.50	4.16	3.86	3.59	3.35	3.14	2.95	2.77	2.61	2.47	2.34	2.21	2.10	1.99	1.89	1.80	1.72	1.64	1.60	

组合臂长60m时 In case the length of compound jib is 60m

工作幅度 Working radius	2.5	15	16	18	20	22	24	26	28	30	32	34	36	38	40	42	44	46	48	50	52	54	56	58	60
	12.00	1.04	9.63	8.53	7.64	6.91	6.29	5.76	5.31	4.91	4.57	4.26	3.94	3.69	3.47	3.27	3.08	2.92	2.76	2.62	2.49	2.37	2.25	2.15	
	6.00	6.00	6.00	6.00	6.00	6.00	6.00	5.76	5.31	4.91	4.57	4.26	3.99	3.74	3.52	3.32	3.13	2.97	2.81	2.67	2.54	2.42	2.30	2.20	

组合臂长55m时 In case the length of compound jib is 55m

工作幅度 Working radius	2.5	16	18	20	22	24	26	28	30	32	34	36	38	40	42	44	46	48	50	52	54	55
	12.00	0.29	9.11	8.16	7.38	6.72	6.16	5.67	5.25	4.88	4.55	4.26	4.00	3.76	3.55	3.35	3.17	3.01	2.86	2.72	2.65	
	6.00	6.00	6.00	6.00	6.00	6.00	6.00	5.72	5.30	4.93	4.60	4.31	4.05	3.81	3.60	3.40	3.22	3.06	2.91	2.77	2.70	

组合臂长50m时 In case the length of compound jib is 50m

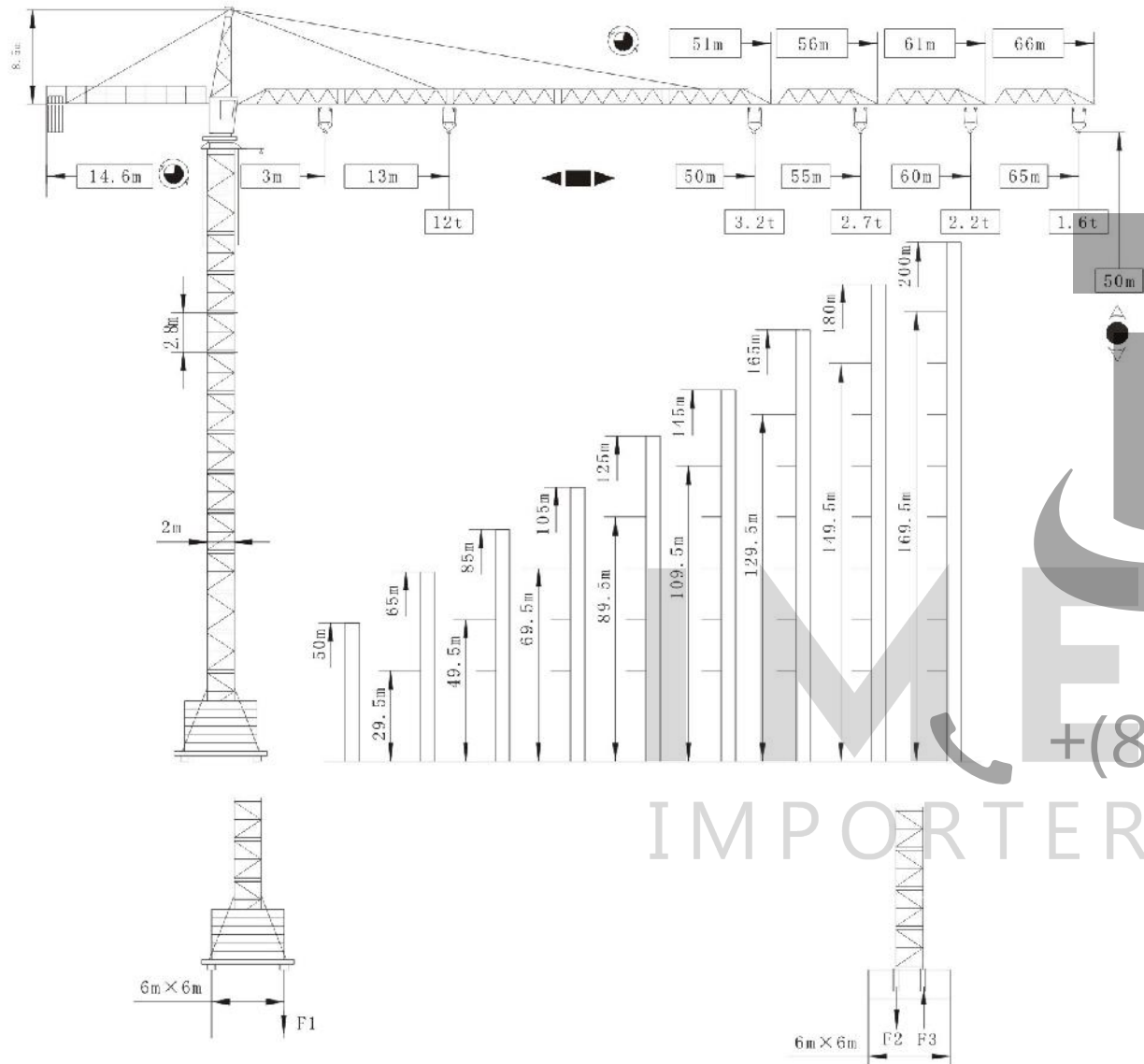
工作幅度 Working radius	2.5	16	18	20	22	24	26	28	30	32	34	36	38	40	42	44	46	48	50
	12.00	0.70	9.48	8.50	7.68	7.00	6.42	5.91	5.48	5.09	4.75	4.45	4.18	3.93	3.71	3.51	3.32	3.15	
	6.00	6.00	6.00	6.00	6.00	6.00	6.00	5.96	5.53	5.14	4.80	4.50	4.23	3.98	3.76	3.56	3.37	3.20	

机构特性 Mechanism Characteristics

起升 Hoisting	m/min	0~50	0~100	kW	400m
	t	10	5	37	
变幅 Derricking	m/min	60/30/9	5/3.7/1.1		
回转 Slewing	r/min	0~0.6	2×4.4		
顶升 Jacking	m/min	0.5	7.5		
电源 Power Supply		380V/50HZ			
供电容量 Power Capacity		59			

本公司保留对产品进行更新、改进的权利。用户所购产品的某些结构或参数可能与本产品样本不符，敬请留意，并请与我们联系。

The Company reserves its rights to update or improve the product. Some structures or parameters of the product the user purchased might not conform to this operating instruction manual. If any, please contact the company immediately.



F1	◆ 90t	□ 120t	
	83t		
F2	◆ 134t	□ 200t	
F3	◆ 76t	□ 160t	69t

F 反力 F Reverse Force	◆ 工作情况 Work Condition □ 非工作情况 Not Work Condition	自重 Deadweight
-------------------------	---	------------------

本公司保留对产品进行更新、改进的权利。用户所购产品的某些结构或参数可能与本产品样本不符，敬请留意，并请与我们联系。

The Company reserves its rights to update or improve the product. Some structures or parameters of the product the user purchased might not conform to this operating instruction manual. If any, please contact the company immediately.

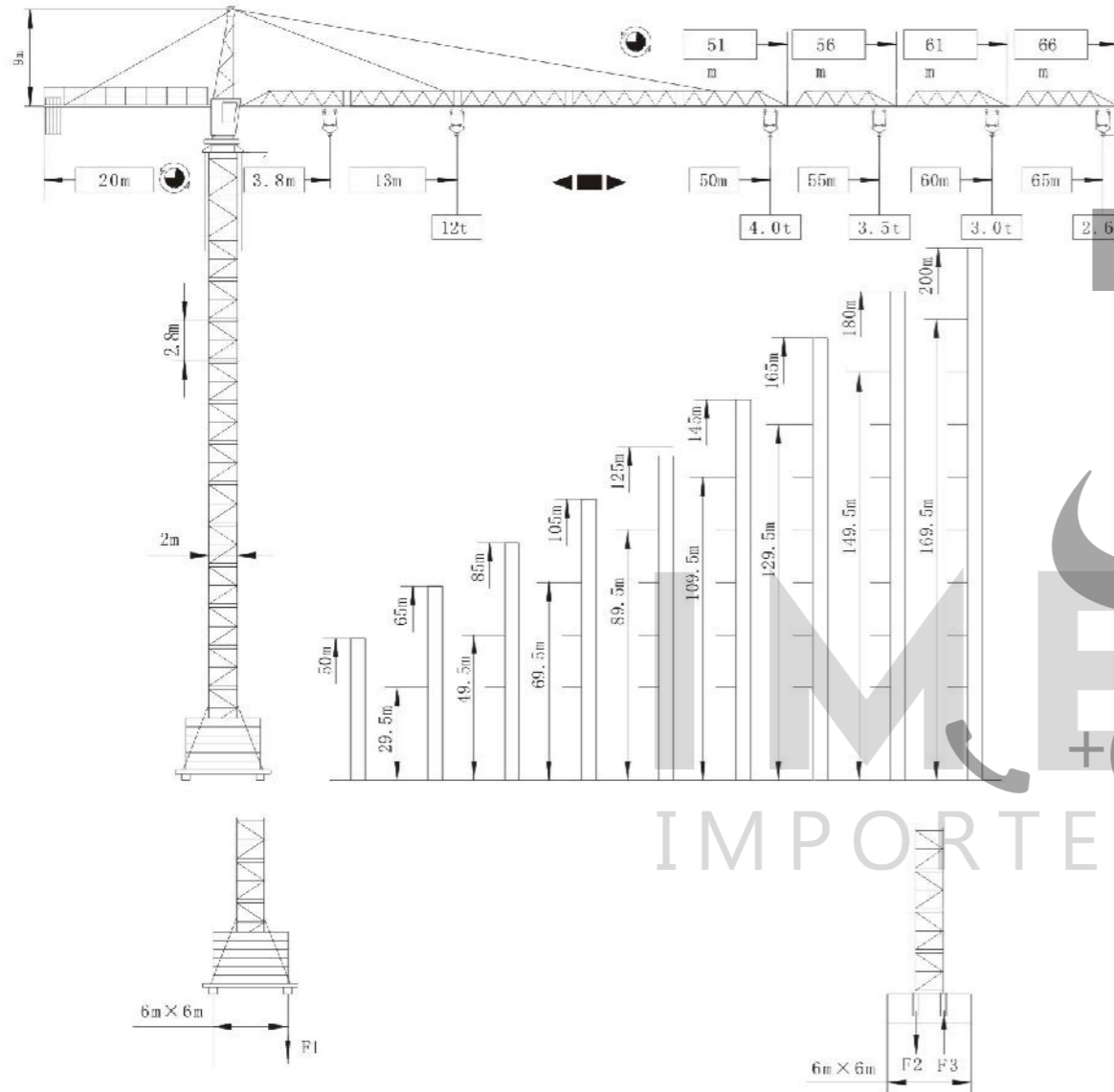


自升塔式起重机 Self-Raising Tower Crane

QTZ200 (6526)

自升塔式起重机 Self-Raising Tower Crane

QTZ200 (6526)



载荷特性 Load Characteristics

组合臂长65m时 In case the length of compound jib is 65m

工作幅度 Working radius	3.8	19.5	20	22	24	26	28	30	32	34	36	38	40	42	44	46	48	50	52	54	56	58	60	62	64	65
	12.00	11.47	10.24	9.22	8.36	7.63	7.01	6.44	5.78	5.56	5.18	4.85	4.54	4.26	4.01	3.78	3.57	3.37	3.19	3.02	2.87	2.72	2.59	2.46	2.40	
	6.00	6.00	6.00	6.00	6.00	6.00	6.00	6.00	6.00	5.76	5.38	5.05	4.74	4.46	4.21	3.98	3.77	3.57	3.39	3.22	3.07	2.92	2.79	2.66	2.60	

组合臂长60m时 In case the length of compound jib is 60m

工作幅度 Working radius	3.8	20	22	24	26	28	30	32	34	36	38	40	42	44	46	48	50	52	54	56	58	60
	12.00	10.46	9.42	8.55	7.80	7.17	6.61	6.12	5.69	5.31	4.96	4.65	4.37	4.11	3.86	3.66	3.46	3.28	3.11	2.95	2.80	
	6.00	6.00	6.00	6.00	6.00	6.00	6.00	6.00	5.89	5.61	5.16	4.85	4.57	4.31	4.06	3.86	3.66	3.48	3.31	3.15	3.00	





组合臂长55m时 In case the length of compound jib is 55m

工作幅度 Working radius	3.8	20	22	24	26	28	30	32	34	36	38	40	42	44	46	48	50	52	54	55
	12.00	10.74	9.68	8.78	8.03	7.37	6.80	6.30	5.86	5.47	5.11	4.80	4.51	4.23	4.00	3.78	3.58	3.39	3.30	
	6.00	6.00	6.00	6.00	6.00	6.00	6.00	6.00	6.00	5.67	5.31	5.00	4.71	4.43	4.20	3.98	3.78	3.59	3.50	


组合臂长50m时 In case the length of compound jib is 50m

工作幅度 Working radius	3.8	20	22	24	26	28	30	32	34	36	38	40	42	44	46	48	50
	12.00	10.78	9.72	8.82	8.06	7.40	6.83	6.33	5.89	5.49	5.14	4.82	4.53	4.26	4.02	3.80	
	6.00	6.00	6.00	6.00	6.00	6.00	6.00	6.00	6.00	5.69	5.34	5.02	4.73	4.46	4.22	4.00	

机构特性 Mechanism Characteristics

起升 Hoisting		m/min	0~50	0~100	kW	51.5	480m
		t	12	6			
变幅 Derricking		m/min	60/30/9			5/3.7/1.1	
回转 Slewing		r/min	0~0.6			2×5.5	
顶升 Jacking		m/min	0.5			11	
电源 Power Supply			380V/50Hz				
供电容量 Power Capacity						79	

F1	◆ 90t	□ 86t	
	90t		
F2	◆ 134t	□ 154t	
F3	◆ 98t	□ 80t	69t

F 反力 F Reverse force	◆ 工作工况 Work Condition □ 非工作工况 Not Work Condition	 自重 Deadweight
-------------------------	---	--

本公司保留对产品进行更新、改进的权利。用户所购产品的某些结构或参数可能与本产品样本不符，敬请留意，并请与我们联系。

The Company reserves its rights to update or improve the product. Some structures or parameters of the product the user purchased might not conform to this operating instruction manual. If any, please contact the company immediately.

本公司保留对产品进行更新、改进的权利。用户所购产品的某些结构或参数可能与本产品样本不符，敬请留意，并请与我们联系。

The Company reserves its rights to update or improve the product. Some structures or parameters of the product the user purchased might not conform to this operating instruction manual. If any, please contact the company immediately.



自升塔式起重机 Self-Raising Tower Crane

QTZ250 (7030)

自升塔式起重机 Self-Raising Tower Crane

QTZ250 (7030)

载荷特性 Load Characteristics

组合臂长70m时 In case the length of compound jib is 70m

工作幅度 Working radius	22	24	26	28	30	32	34	36	38	40	42	44	46	48	50	52	54	56	58	60	62	64	66	68	70
12.00	10.85	9.88	9.06	8.35	7.83	7.38	6.97	6.57	6.19	5.84	5.51	5.23	4.94	4.68	4.44	4.22	4.01	3.82	3.64	3.48	3.33	3.18	3.05	2.92	2.80
6.00	6.00	6.00	6.00	6.00	6.00	6.00	6.00	6.00	6.00	6.09	6.74	6.43	6.14	5.88	5.64	5.42	5.21	5.02	4.84	4.68	4.53	4.38	4.25	4.12	4.00

组合臂长65m时 In case the length of compound jib is 65m

工作幅度 Working radius	2.5~23	24	26	28	30	32	34	36	38	40	42	44	46	48	50	52	54	56	58	60	62	64	65
12.00	11.09	10.11	9.26	8.54	7.91	7.35	6.86	6.42	6.03	5.68	5.36	5.06	4.80	4.54	4.32	4.12	3.92	3.74	3.57	3.42	3.27	3.20	
6.00	6.00	6.00	6.00	6.00	6.00	6.00	6.00	6.00	6.00	6.00	6.00	6.00	6.00	6.00	6.00	6.00	6.00	6.00	6.00	6.00	6.00	6.00	6.00

组合臂长60m时 In case the length of compound jib is 60m

工作幅度 Working radius	2.5~23	24	26	28	30	32	34	36	38	40	42	44	46	48	50	52	54	56	58	60
12.00	11.16	10.17	9.32	8.59	7.98	7.40	6.90	6.47	6.17	5.72	5.39	5.10	4.83	4.58	4.36	4.14	3.95	3.77	3.60	
6.00	6.00	6.00	6.00	6.00	6.00	6.00	6.00	6.00	6.00	6.00	6.00	6.00	6.00	6.00	6.00	6.00	6.00	6.00	6.00	

组合臂长55m时 In case the length of compound jib is 55m

工作幅度 Working radius	2.5~24	26	28	30	32	34	36	38	40	42	44	46	48	50	52	54	55
12.00	11.22	9.83	9.07	8.40	7.82	7.30	6.84	6.42	6.05	5.71	5.40	5.12	4.86	4.62	4.40	4.30	
6.00	6.00	6.00	6.00	6.00	6.00	6.00	6.00	6.00	6.00	6.00	6.00	6.00	6.00	6.00	6.00	6.00	

机构特性 Mechanism Characteristics

	起升 Hoisting	变幅 Derricking	回转 Slewing	顶升 Jacking	电源 Power Supply	供电容量 Power Capacity
速度 m/min	0~80	0~60	0~0.6	0.5	380V/50HZ	79
力矩 t	3/6	6/12	2x125N.m	11		
功率 kW	51.5	125N.m				

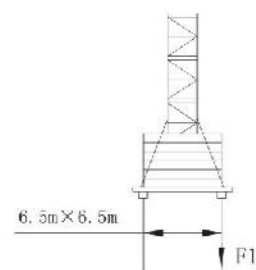
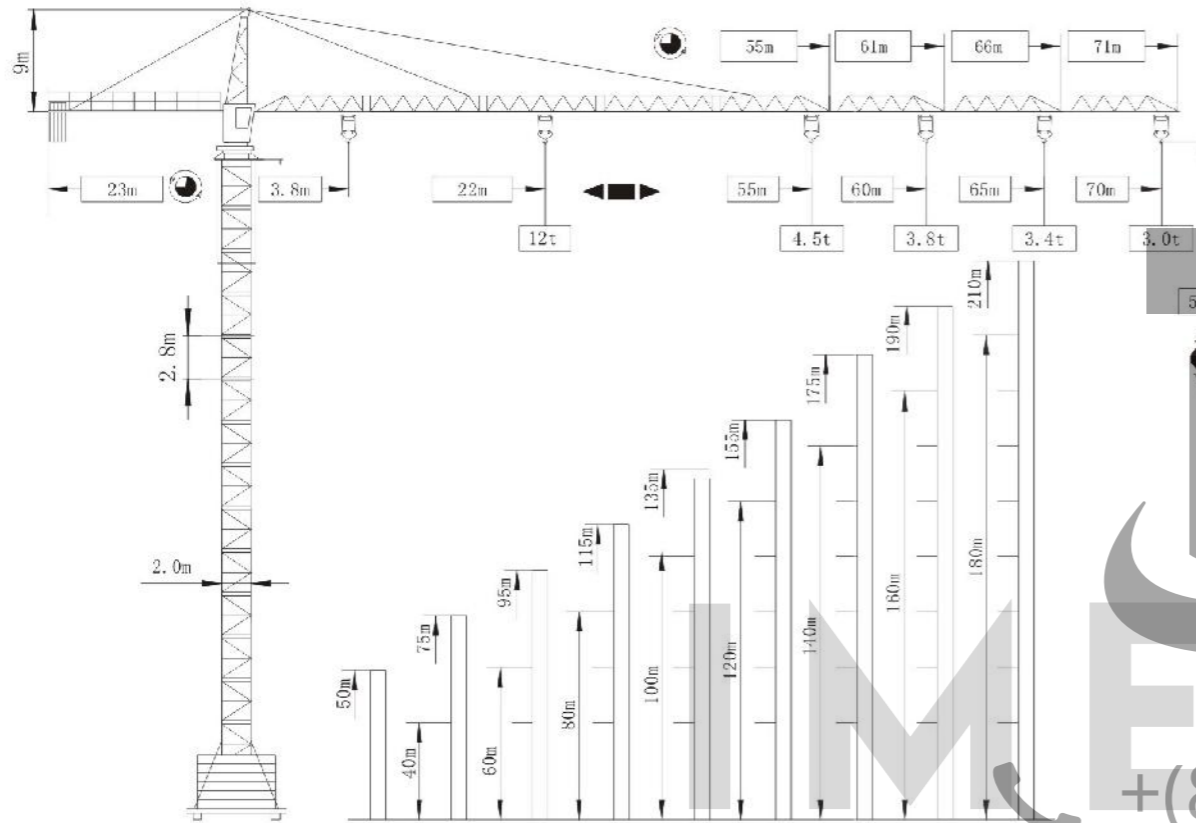
变幅 Derricking m/min 0~60 125N.m

回转 Slewing r/min 0~0.6 2x125N.m

顶升 Jacking m/min 0.5 11

电源 Power Supply 380V/50HZ

供电容量 Power Capacity 79



F1	◆ 110t □ 120t
	102t

F2	◆ 156t □ 216t	
F3	◆ 99t □ 160t	99t

F 反力 F Reverse Force	◆ 工作工况 Work Condition □ 非工作工况 Not Work Condition	自重 Deadweight
-------------------------	---	------------------

本公司保留对产品进行更新、改进的权利。用户所购产品的某些结构或参数可能与本产品样本不符，敬请留意，并请与我们联系。

The Company reserves its rights to update or improve the product. Some structures or parameters of the product the user purchased might not conform to this operating instruction manual. If any, please contact the company immediately.

本公司保留对产品进行更新、改进的权利。用户所购产品的某些结构或参数可能与本产品样本不符，敬请留意，并请与我们联系。

The Company reserves its rights to update or improve the product. Some structures or parameters of the product the user purchased might not conform to this operating instruction manual. If any, please contact the company immediately.

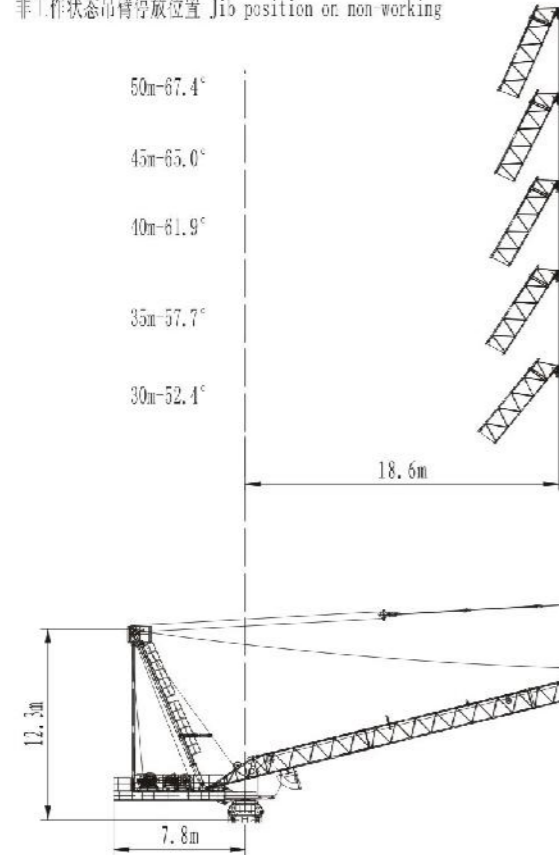


### QTD120

#### 动臂塔式起重机 Luffing Tower Crane

塔机外形示意图 Note

非工作状态吊臂停放位置 Jib position on non working



载荷特性 Load Chart

臂长(m) Jib Length	倍率 PaCl	R(Cmax) m	C(max) t	18.6	20	25	30	35	40	45	50
50	IV	18.6	8.00	8.00	6.90	5.10	3.80	3.00	2.30	1.80	1.40
	II	30.0	4.00	4.00	4.00	4.00	4.00	3.20	2.50	2.00	1.60
45	IV	18.6	4.00	4.00	4.00	4.00	4.00	3.10	2.40	2.00	
	II	30.0	8.00	8.00	7.10	5.30	4.00	3.30	2.60	2.40	
40	IV	18.6	8.00	8.00	7.10	5.30	4.10	3.20	2.40		
	II	30.0	4.00	4.00	4.00	4.00	4.00	3.40	2.60		
35	IV	18.6	8.00	8.00	7.10	5.30	4.10	3.20			
	II	30.0	4.00	4.00	4.00	4.00	4.00	3.40			
30	IV	18.6	8.00	8.00	7.20	5.40	4.20				
	II	30.0	4.00	4.00	4.00	4.00	4.00				

### QTD120

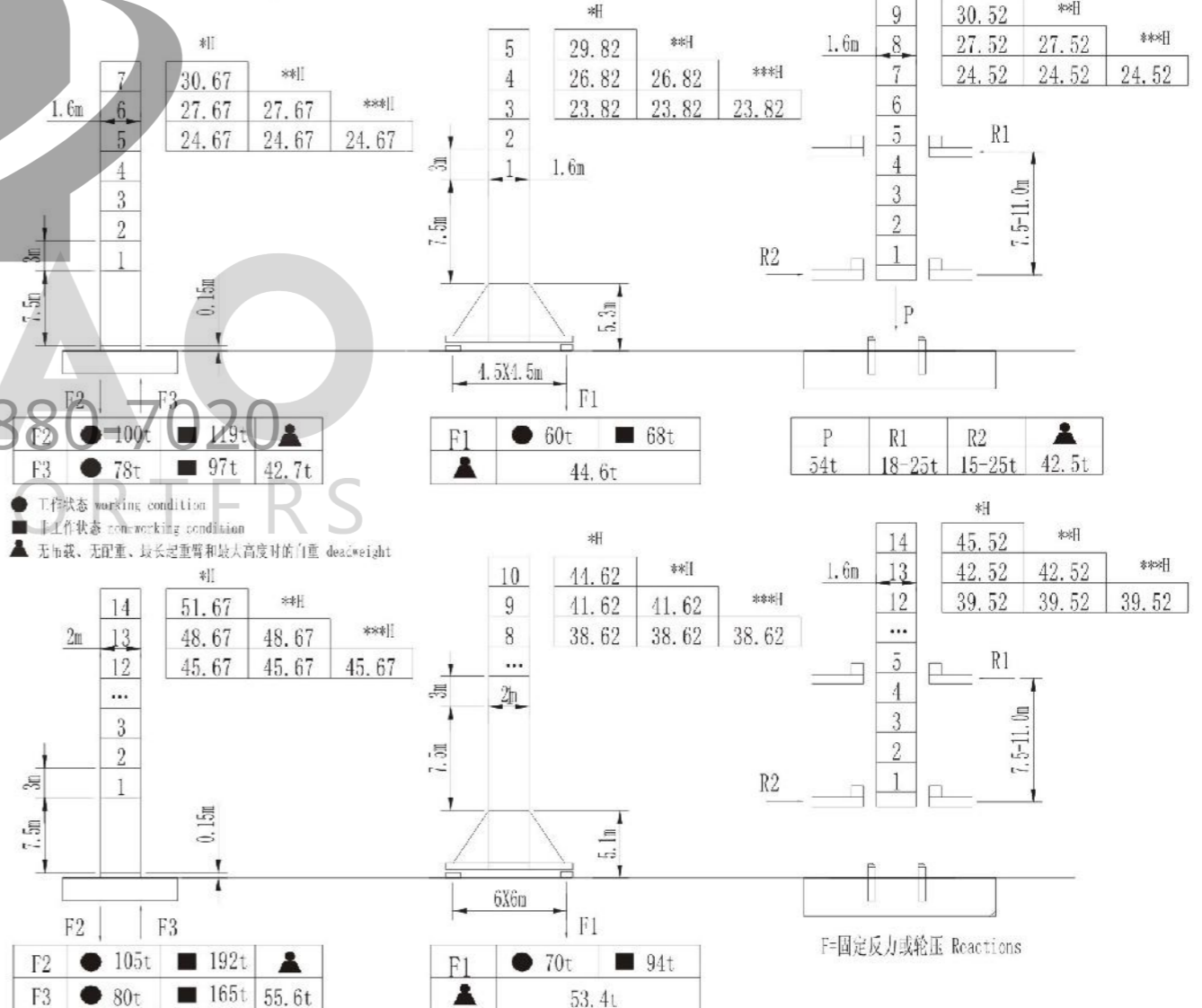
#### 动臂塔式起重机 Luffing Tower Crane

机构特性 Mechanism Chart

机构特性	m/min	25		50		容绳量 Wire drum	电机 Motor
		t	4.00	2.00	8.00		
起升 Hoisting	t	4.00	2.00	8.00	4.00	500m >500m*	45KW
拉臂 Luffing		<3min					30KW
回转 Slewing	r/min	0.7					95% 3X2
行走 Travelling	m/min	12.5--25					4X1.7/3.4KW
电力 Power		380V(±10%) 50HZ		180KW			

固定式、行走式、内爬式塔机塔身配置 Mast section combination of static, travelling and internal climbing crane

H 臂架绞点高度(m) 臂架 jib \*30-35m \*\*40-45m \*\*\*50m



本公司保留对产品进行更新、改进的权利. 用户所购产品的某些结构或参数可能与本产品样本不符, 敬请留意, 并请与我们联系.  
 The Company reserves its rights to update or improve the product. Some structures or parameters of the product the user purchased might not conform to this operating instruction manual. If any, please contact the company immediately.

本公司保留对产品进行更新、改进的权利. 用户所购产品的某些结构或参数可能与本产品样本不符, 敬请留意, 并请与我们联系.  
 The Company reserves its rights to update or improve the product. Some structures or parameters of the product the user purchased might not conform to this operating instruction manual. If any, please contact the company immediately.

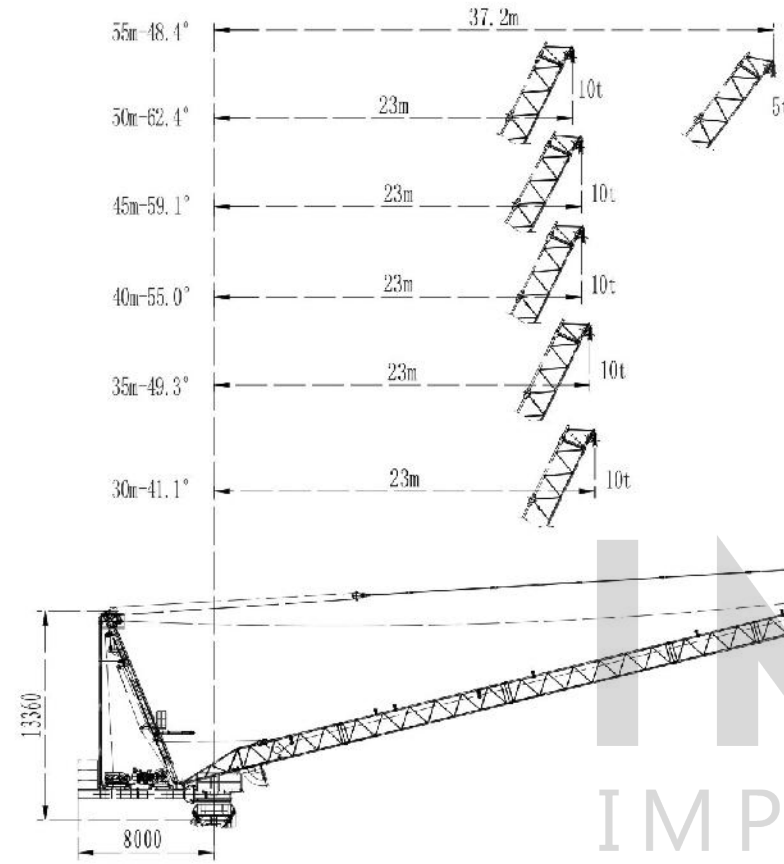


### QTD160

#### 动臂塔式起重机 Luffing Tower Crane

塔机外形示意图 Note

非工作状态吊臂停放位置 Jib position on non-working



### QTD160

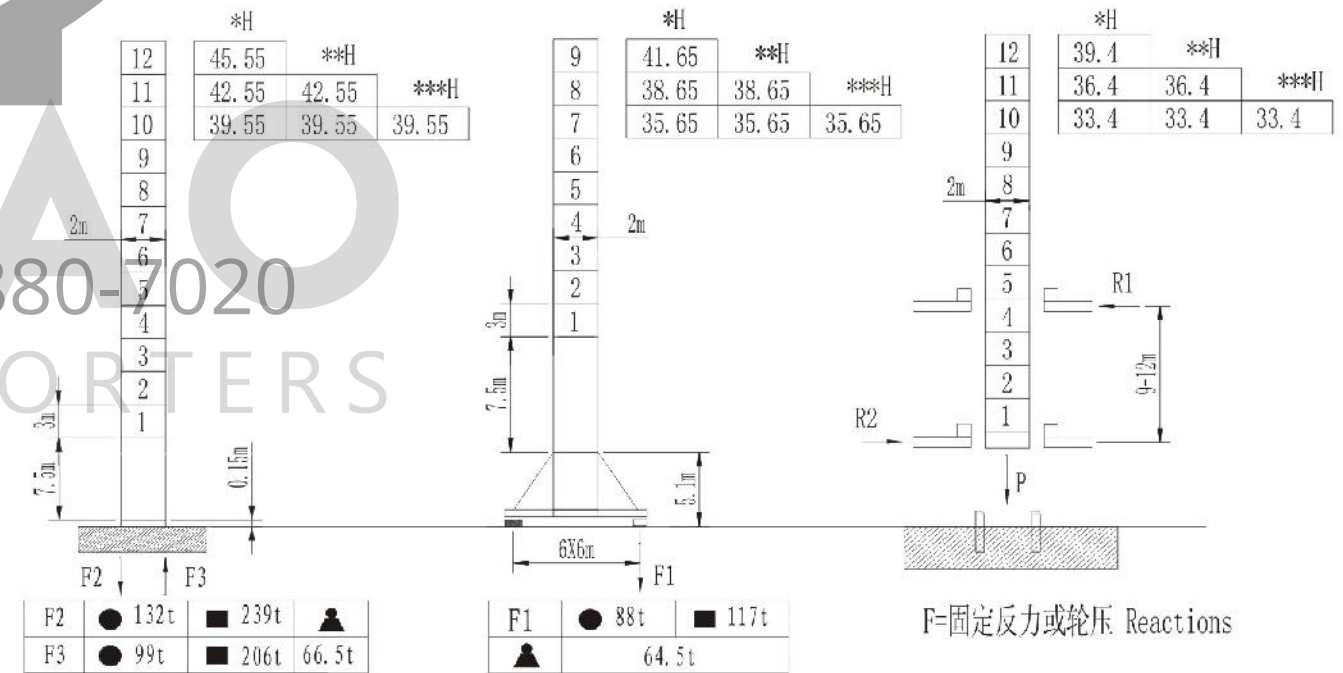
#### 动臂塔式起重机 Luffing Tower Crane

机构特性 Mechanism Chart

机构名称	单位	20t		40t		80t		容量 Wire drum	电机 Motor
		m/min	t	m/min	t	m/min	t		
起升 Hoisting	m/min t	20	5.00	40	2.50	40	10.00	500m >500m*	45KW
拉臂 Luffing		<3min							30KW
回转 Slewing	r/min	0.7							145N.mX2
行走 Travelling	m/min	12.5-25							4X1.7/3.4KW
电力 Power		380V(±10%) 50HZ							180KW

固定式、行走式、内爬式塔机塔身配置 Mast section combination of static, travelling and internal climbing crane

H 臂架绞点高度(m) 臂架 jib \*30-35m \*\*40-45m \*\*\*50-55m



F=固定反力或轮压 Reactions

- 工作状态 working condition
- 非工作状态 non-working condition
- ▲ 无吊载、无配重、最长起重臂和最大高度时的自重 deadweight

臂长 (m)	倍率	R(Cmax)	C(max)	20	25	30	35	40	45	50	55
Jib Length	Fe:11	n	t	t	t	t	t	t	t	t	t
55	II	37.2	5.00	5.00	5.00	5.00	5.00	3.90	3.30	2.80	2.20
50	IV	23.0	10.0	10.0	7.50	6.00	5.50	4.10	3.50	3.00	
	II	37.0	5.00	5.00	5.00	5.00	5.00	4.10	3.50	3.00	
45	IV	23.0	10.0	10.0	7.70	6.20	5.10	4.20	3.60		
	II	37.8	5.00	5.00	5.00	5.00	5.00	4.20	3.60		
40	IV	23.0	10.0	10.0	7.80	6.20	5.10	4.30			
	II	38.0	5.00	5.00	5.00	5.00	5.00	4.30			
35	IV	23.0	10.0	10.0	8.00	8.40	5.30				
	II	35.0	5.00	5.00	5.00	5.00	5.00				
30	IV	23.0	10.0	10.0	8.10	6.50					
	II	30.0	5.00	5.00	5.00	5.00					

本公司保留对产品进行更新、改进的权利。用户所购产品的某些结构或参数可能与本产品样本不符，敬请留意，并请与我们联系。  
 The Company reserves its rights to update or improve the product. Some structures or parameters of the product the user purchased might not conform to this operating instruction manual. If any, please contact the company immediately.

本公司保留对产品进行更新、改进的权利。用户所购产品的某些结构或参数可能与本产品样本不符，敬请留意，并请与我们联系。  
 The Company reserves its rights to update or improve the product. Some structures or parameters of the product the user purchased might not conform to this operating instruction manual. If any, please contact the company immediately.

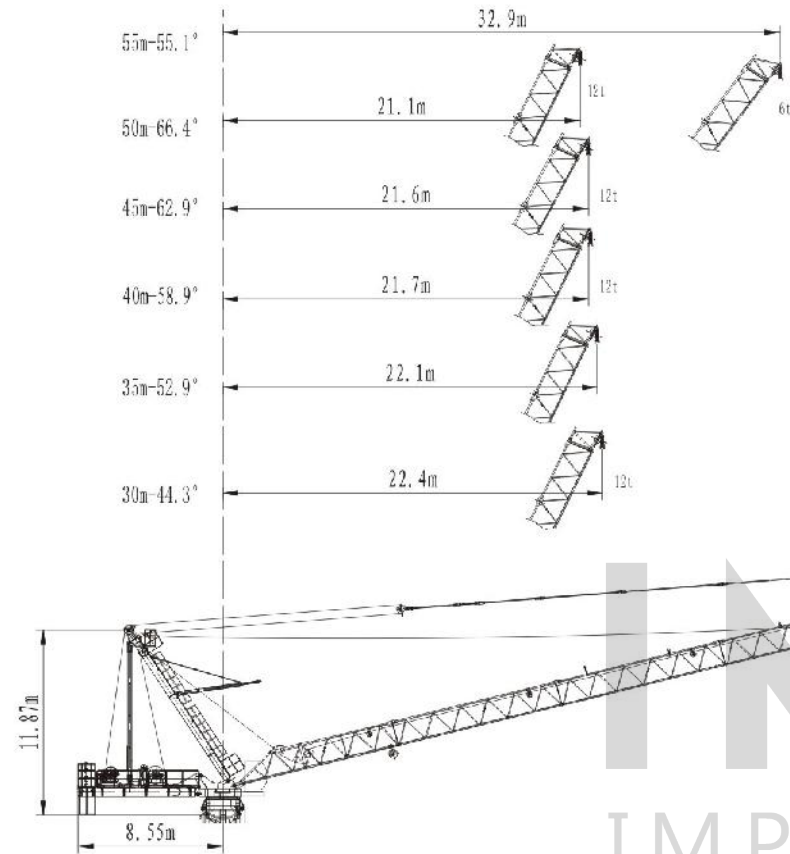


### QTD225

#### 动臂塔式起重机 Luffing Tower Crane

塔机外形示意图 Note

非工作状态吊臂停放位置 Jib position on non working



载荷特性 Load Chart

臂长(m) Jib Length	倍率 Fall	R(Cmax) m	C(max) t	20	25	30	35	40	45	50	55
55	II	32.9	6.00	6.00	6.00	6.00	5.40	4.24	3.36	2.68	2.20
	IV	21.1	12.0	12.00	9.42	7.16	5.59	4.44	3.60	3.00	
50	II	34.6	6.00	6.00	6.00	6.00	6.00	4.72	3.85	3.20	
	IV	21.6	12.0	12.00	9.83	7.56	5.97	4.83	4.00		
45	II	36.0	6.00	6.00	6.00	6.00	6.00	5.09	4.20		
	IV	21.7	12.0	12.0	9.94	7.72	6.19	5.10			
40	II	36.8	6.00	6.00	6.00	6.00	6.00	5.30			
	IV	22.1	12.0	12.00	10.19	7.97	6.45				
35	II	35.0	6.00	6.00	6.00	6.00	6.00				
	IV	22.4	12.0	12.00	10.40	8.20					
30	II	30.0	6.00	6.00	6.00	6.00					

### QTD225

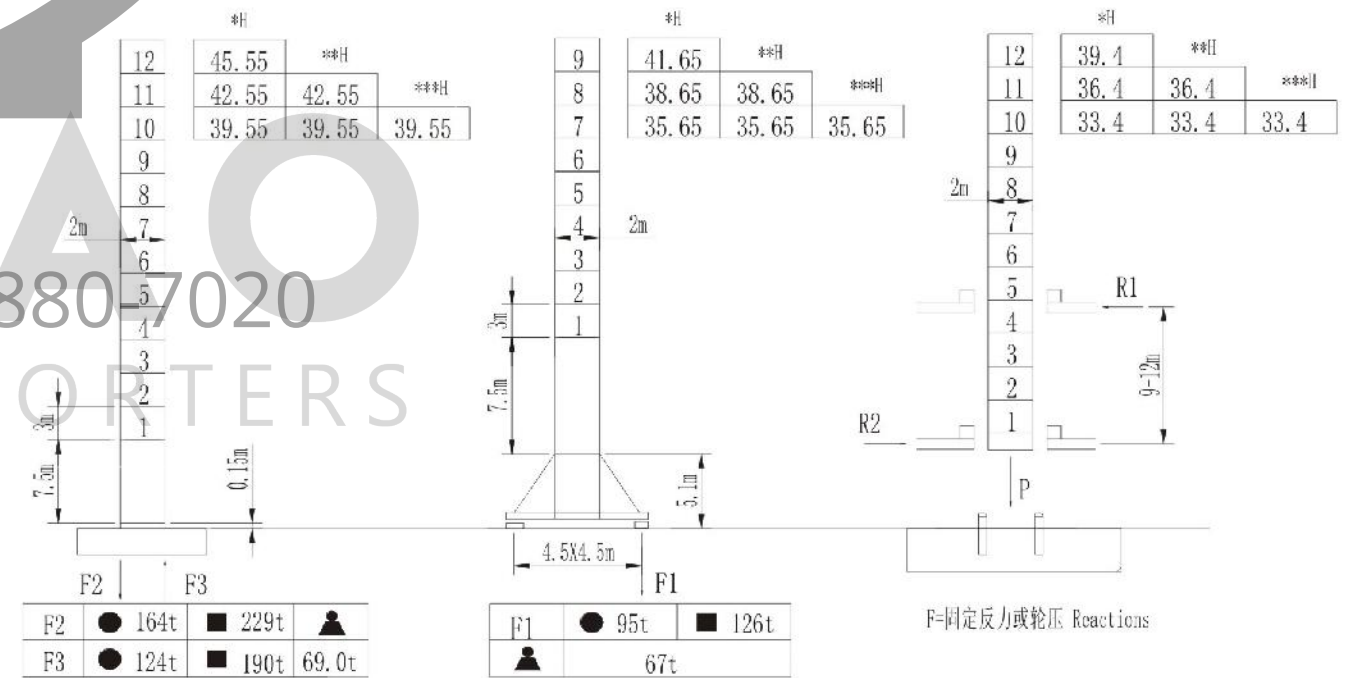
#### 动臂塔式起重机Luffing Tower Crane

机构特性 Mechanism Chart

机构特性	m/min t	50		100		容量 Wire drum 500m >500m*	电机 Motor 55KW
		25	3.00	50	6.00		
起升 Hoisting		25	3.00	50	6.00		
拉臂 Luffing		≤3min					45Kw
回转 Slewing	r/min	0.7					185N.mx2
行走 Travelling	m/min	12.5--25					4X1.7/3.4Kw
电力 Power		380V(±10%) 50HZ					180KW

固定式、行走式、内爬式塔机塔身配置 Mast section combination of static, travelling and internal climbing crane

H 臂架绞点高度(m) 臂架 jib \*30-35m \*\*40-45m \*\*\*50-55m



- 工作状态 working condition
- 非工作状态 non-working condition
- ▲ 无吊载、无配重、最长起重臂和最大高度时的自重 deadweight

本公司保留对产品进行更新、改进的权利。用户所购产品的某些结构或参数可能与本产品样本不符，敬请留意，并请与我们联系。  
The Company reserves its rights to update or improve the product. Some structures or parameters of the product the user purchased might not conform to this operating instruction manual. If any, please contact the company immediately.

本公司保留对产品进行更新、改进的权利。用户所购产品的某些结构或参数可能与本产品样本不符，敬请留意，并请与我们联系。  
The Company reserves its rights to update or improve the product. Some structures or parameters of the product the user purchased might not conform to this operating instruction manual. If any, please contact the company immediately.

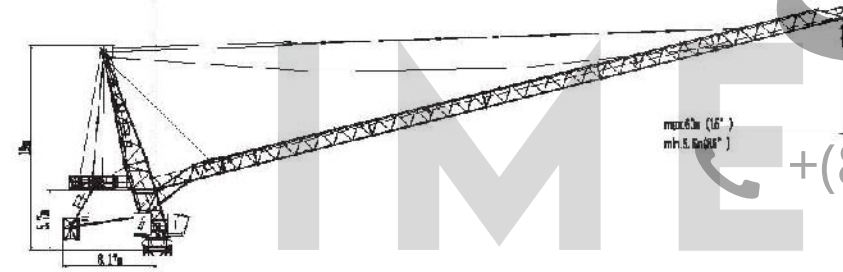
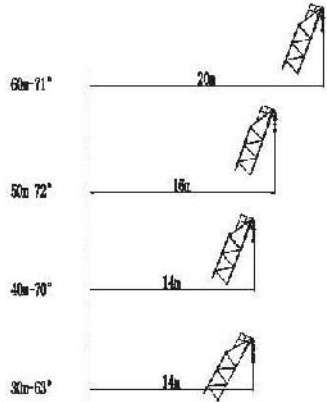


**QTD300**

**动臂塔式起重机  
 Luffing Tower Crane**

塔机外形示意图 Note

非工作状态吊臂停放位置 Jib position on non-working



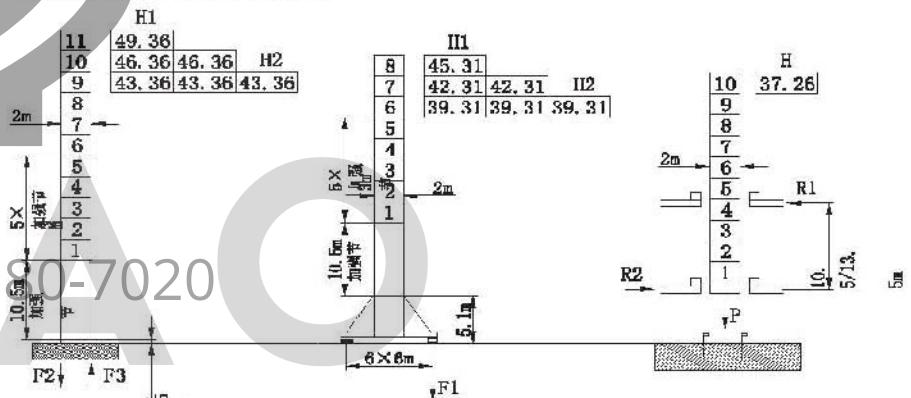
**QTD300**

**动臂塔式起重机 Luffing Tower Crane**

3. 机构特性

机构	速度	起升	变幅	回转	行走	容量	电机
起升	m/min t	32 8.00	64 4.00	16 3.0	32 8.00	600m >600m*	75KW
变幅		1 min 40 s					55KW
回转	r/min	0.7					2×9KW
行走	m/min	12.5 25					4×1.7/3.15kw
电力		380V(±10%) 50Hz					180KW

4. 固定式、行走式、内爬式塔机塔身配置



固定式	行走式	P	R1	R2
F2 ● 164t	F1 ● 93t	81t	30t	27t
■ 283t	■ 124t	69.5t		
F3 ● 118t	▲ 76.6t			
■ 227t				
▲ 68.5t				

- 注:1) H1代表臂架幅度为30-40m时的塔身组合中臂根铰点处所能达到的最大高度。  
 H2代表臂架幅度为50-60m时的塔身组合中臂根铰点处所能达到的最大高度。  
 2) ●工作状态  
 3) ■非工作状态  
 4) ▲无吊载、无配重、最长起重臂和最大高度时的自重

2. 起重特性

臂长	倍率	R(max)	D(max)	15	20	25	30	35	40	45	50	55	60
60	IV	-	-	-	-	-	-	-	-	-	-	-	-
	II	22.8	8.00	8.00	8.00	7.33	6.15	6.21	4.53	3.98	3.55	3.21	2.90
50	IV	5.7	16.00	16.00	13.75	10.65	8.60	7.12	6.02	6.28	4.70		
	II	31.2	8.00	8.00	8.00	8.00	8.00	7.14	6.22	5.48	4.90		
40	IV	7.3	16.00	16.00	18.98	11.27	9.05	7.92	6.70				
	II	31.5	8.00	8.00	8.00	8.00	8.00	7.69	6.90				
30	IV	8.1	16.00	16.00	14.20	11.88	9.50						
	II	30.0	8.00	8.00	8.00	8.00	8.00						

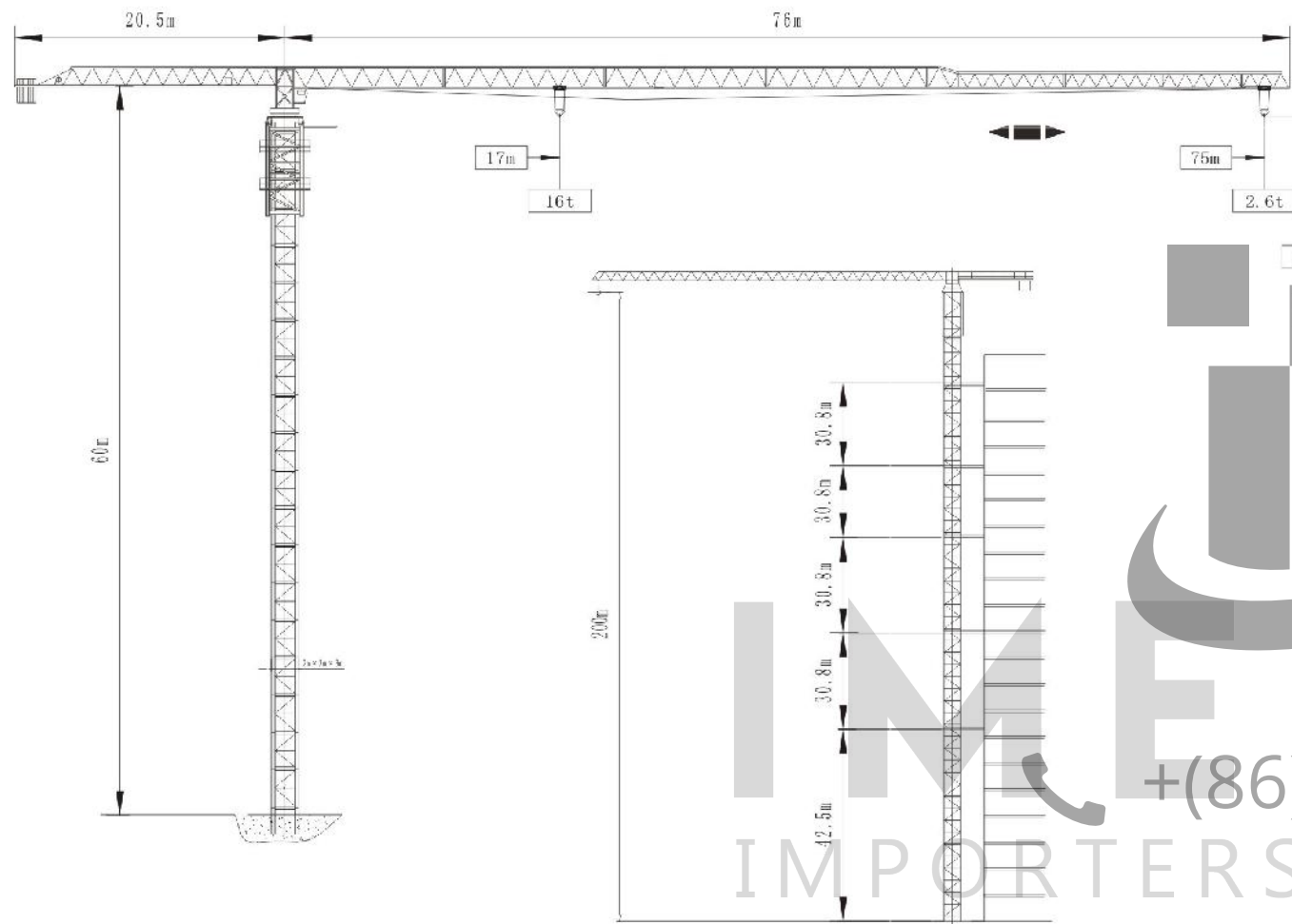
本公司保留对产品进行更新、改进的权利,用户所购产品的某些结构或参数可能与本产品样本不符,敬请留意,并请与我们联系。  
 The Company reserves its rights to update or improve the product. Some structures or parameters of the product the user purchased might not conform to this operating instruction manual. If any, please contact the company immediately.

本公司保留对产品进行更新、改进的权利,用户所购产品的某些结构或参数可能与本产品样本不符,敬请留意,并请与我们联系。  
 The Company reserves its rights to update or improve the product. Some structures or parameters of the product the user purchased might not conform to this operating instruction manual. If any, please contact the company immediately.



### QTP300

#### 自升塔式起重机 Self-Raising Tower Crane



### QTP300

#### 自升塔式起重机 Self-Raising Tower Crane 载荷特性 Load Characteristics

组合臂长70m时 In case the length of compound jib is 70m

Working radius	工作幅度																											
	3	4	5	6	7	8	9	10	11	12	13	14	15	16	17	18	19	20	21	22	23	24	25	26	27	28	29	30
a=2	8.00	8.00	8.00	8.00	8.00	8.00	8.00	8.00	8.00	8.00	8.00	8.00	8.00	8.00	8.00	8.00	8.00	8.00	8.00	8.00	8.00	8.00	8.00	8.00	8.00	8.00	8.00	8.00
a=1	16.00	14.71	13.04	11.09	10.37	9.64	8.84	8.16	7.56	7.04	6.58	6.16	5.79	5.46	5.15	4.88	4.62	4.39	4.18	3.98	3.80	3.63	3.47	3.32	3.18	3.05	2.93	2.81

组合臂长70m时 In case the length of compound jib is 70m

Working radius	工作幅度																											
	3	4	5	6	7	8	9	10	11	12	13	14	15	16	17	18	19	20	21	22	23	24	25	26	27	28	29	30
a=2	8.00	8.00	8.00	8.00	8.00	8.00	8.00	8.00	8.00	8.00	8.00	8.00	8.00	8.00	8.00	8.00	8.00	8.00	8.00	8.00	8.00	8.00	8.00	8.00	8.00	8.00	8.00	8.00
a=1	16.00	15.27	13.54	12.15	10.99	10.02	9.20	8.49	7.87	7.33	6.85	6.42	6.04	5.69	5.38	5.09	4.83	4.59	4.41	4.16	3.97	3.79	3.63	3.48	3.33	3.20	3.07	2.95

组合臂长65m时 In case the length of compound jib is 65m

Working radius	工作幅度																											
	3	4	5	6	7	8	9	10	11	12	13	14	15	16	17	18	19	20	21	22	23	24	25	26	27	28	29	30
a=2	8.00	8.00	8.00	8.00	8.00	8.00	8.00	8.00	8.00	8.00	8.00	8.00	8.00	8.00	8.00	8.00	8.00	8.00	8.00	8.00	8.00	8.00	8.00	8.00	8.00	8.00	8.00	8.00
a=1	16.00	14.88	13.22	11.57	10.50	9.64	8.90	8.26	7.69	7.19	6.74	6.34	5.98	5.65	5.36	5.08	4.83	4.60	4.39	4.19	4.00	3.83	3.67	3.52	3.37	3.23	3.10	2.98

组合臂长60m时 In case the length of compound jib is 60m

Working radius	工作幅度																											
	3	4	5	6	7	8	9	10	11	12	13	14	15	16	17	18	19	20	21	22	23	24	25	26	27	28	29	30
a=2	8.00	8.00	8.00	8.00	8.00	8.00	8.00	8.00	8.00	8.00	8.00	8.00	8.00	8.00	8.00	8.00	8.00	8.00	8.00	8.00	8.00	8.00	8.00	8.00	8.00	8.00	8.00	8.00
a=1	16.00	14.64	13.05	11.31	10.25	9.46	8.74	8.11	7.54	7.04	6.59	6.19	5.82	5.48	5.17	4.88	4.62	4.39	4.17	3.96	3.76	3.57	3.39	3.22	3.06	2.91	2.77	2.64

组合臂长55m时 In case the length of compound jib is 55m

Working radius	工作幅度																											
	3	4	5	6	7	8	9	10	11	12	13	14	15	16	17	18	19	20	21	22	23	24	25	26	27	28	29	30
a=2	8.00	8.00	8.00	8.00	8.00	8.00	8.00	8.00	8.00	8.00	8.00	8.00	8.00	8.00	8.00	8.00	8.00	8.00	8.00	8.00	8.00	8.00	8.00	8.00	8.00	8.00	8.00	8.00
a=1	16.00	14.65	13.04	11.30	10.25	9.47	8.74	8.11	7.54	7.04	6.59	6.19	5.82	5.48	5.17	4.88	4.62	4.39	4.17	3.96	3.76	3.57	3.39	3.22	3.06	2.91	2.77	2.64

#### 机构特性 Mechanism Characteristics

起升Hoisting	m/min	32	64	16	32	kW	550m
	t	4	8	8	16		
变幅Derricking	m/min	60/30/9				185N.M	
回转Slewing	r/min	0~0.6				2 × 125N.M	
顶升Jacking	m/min	0.5				11	
电源Power Supply	380V/50HZ						
供电容量Power Capacity	79						



本公司保留对产品进行更新、改进的权利。用户所购产品的某些结构或参数可能与本产品样本不符，敬请留意，并请与我们联系。

The Company reserves its rights to update or improve the product. Some structures or parameters of the product the user purchased might not conform to this operating instruction manual. If any, please contact the company immediately.

本公司保留对产品进行更新、改进的权利。用户所购产品的某些结构或参数可能与本产品样本不符，敬请留意，并请与我们联系。

The Company reserves its rights to update or improve the product. Some structures or parameters of the product the user purchased might not conform to this operating instruction manual. If any, please contact the company immediately.





CM-2 fEU\_ZE4XSaSmM\_1sz03E6g



CM-2 fK\_-\_UQqTSeaS2N7XMC6lw

**IMEXAO**  
IMPORTERS EXPORTERS  
+(86) 186-8880-7020



CM-2 fOA-RpnxSsyxplOMVE0dmQ



CM-2 gaoxSHq2QOG303Xxohe4HQ





**CM-2 GVRfaGJOQZaAZhTySz35Wg**



**CM-2 Ha1xh3rtRM60tV4M7i3d6g**



**CM-2 HNvIB63eRvakX4ZjXAUOxA**



**CM-2 Idloel6JRJeG-IMYkdSaeQ**

**IMEXAO**  
IMPORTERS EXPORTERS  
+ (86) 186-8880-7020





CM-2 ItZ1CUj2QCewkobzYQomHQ



CM-2 kpV9i1uhRMqMZ-8ejsL2eA



CM-2 NzQZUt7YTfKwYGAn7a8Y9g



CM-2 uuMGoMSgT22A2R\_iftbU8Q

**IMEXAO**  
IMPORTERS EXPORTERS  
+ (86) 186-8880-7020





CM-2 UUQWUOd7TiiaJ6jK3EXGAQ



CM-2 wOOwWB\_nRey-4d-PxdbcCA



CM-2 F1igypmOTZ-tPSF5DgZWew



CM-3 2d5f907929.jpg.240x240

**IMEXAO**  
IMPORTERS EXPORTERS  
+ (86) 186-8880-7020





CM-3 3f14f05f7f.jpg.240x240



CM-3 4b8e6a2e76.jpg.240x240



CM-3 4d2e7d4daf.jpg.240x240



CM-3 4fb2c24e01.jpg.240x240

+ (86) 186-8880-7020

IMPORTERS EXPORTERS





CM-3 32fff9a1f1.jpg.240x240



CM-3 47a8b63e12.jpg.240x240



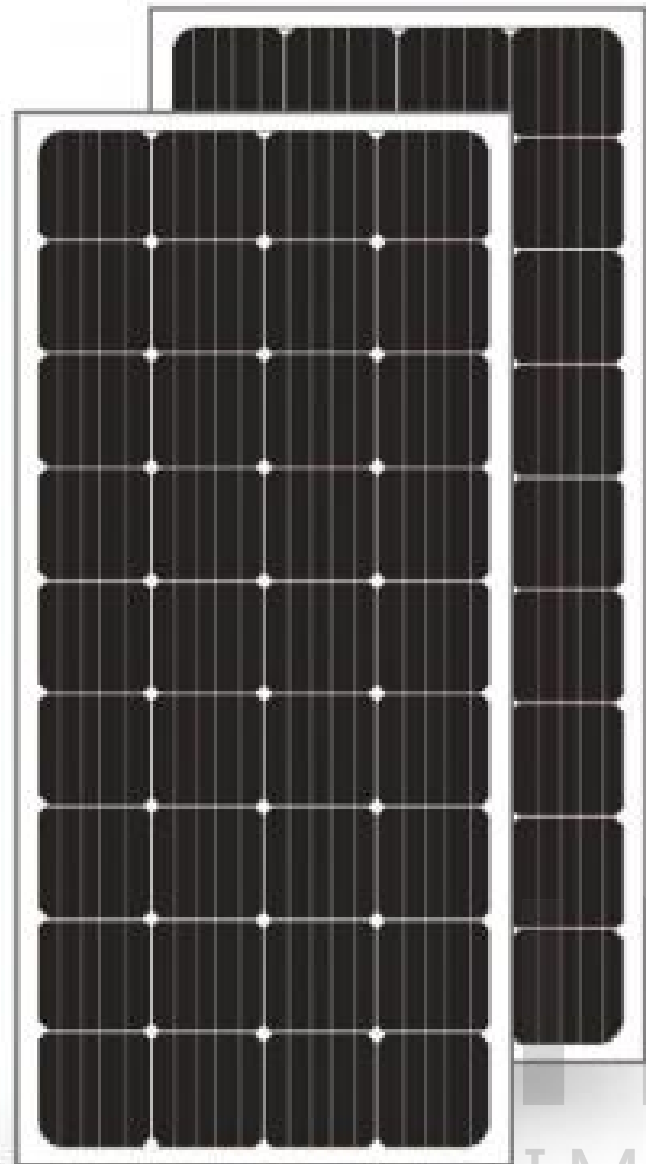
CM-3 60fc680726.jpg.240x240



CM-3 63ef3ccf85.jpg.240x240

**IMEXAO**  
IMPORTERS EXPORTERS  
+ (86) 186-8880-7020





**NEW  
PRODUCT  
PROMOTION**



**CM-3 696e0f021c.png.240x240**

+ (86) 186-8880-7020

IMPORTERS EXPORTERS



**CM-3 221bb16427.jpg.500x500**



**CM-3 706e138fe5.jpg.240x240**





CM-3 953a6acc88.jpg.240x240



CM-3 4390dbfbf3.jpg.240x240



CM-3 45400f0318.jpg.240x240



CM-3 67170c4d73.jpg.240x240

IMEXAO  
+ (86) 186-8880-7020  
IMPORTERS EXPORTERS





CM-3 261866f2d7.jpg.240x240



CM-3 517956d9ed.jpg.240x240



CM-3 3707914f0e.jpg.240x240



CM-3 adlq0LNMTB6DXGjRJUPmXg

**IMEXAO**  
+ (86) 186-8880-7020  
IMPORTERS EXPORTERS





CM-3 c51d91d535.jpg.240x240

**NEW  
PRODUCT  
PROMOTION**



CM-3 cd02b3712a.png.240x240



CM-3 0db196ca62.jpg.240x240



CM-3 7addf887cf.jpg.240x240

**IMEXAO**  
IMPORTERS EXPORTERS  
+(86) 186-8880-7020





**CM-3 7bdd79f9b0.jpg.240x240**



**CM-3 8bbbed7729.jpg.240x240**



**CM-3 15c826666b.jpg.240x240**



**CM-3 26d853b254.jpg.240x240**

**IMEXAO**  
+ (86) 186-8880-7020  
IMPORTERS EXPORTERS





d345f32117.jpg.240x240



d0625b0fac.jpg.240x240



da91ffa582.png.240x240



ec9d96f427.jpg.240x240

IMEXAO  
+ (86) 186-8880-7020  
IMPORTERS EXPORTERS



# Thank You

---

We appreciate your time and attention. If you have any questions or need further information, please feel free to reach out.

---

 **CHINA OFFICE**

Room 19, 2nd Floor DeYi Commercial Building Construction Road No. 4th, Lecong Town Shunde Foshan, Guangdong, Postal code: 528 315

佛山市顺德区乐从镇建设路四号德怡商业大厦北门二楼19-3铺 528315

 + (86) 186-8880-7020     [goldy@imexao.com](mailto:goldy@imexao.com)



@imexao