

Commercial Furniture Catalogue 2024

SAMPLE 1

BUILD YOUR DREAMS WITH RELIABLE SOURCING FROM CHINA

 www.imexao.com

for
 19+ YEARS



IMP
RS
+ (86) 186 8880-7020

CF-1 1



CF-1 2



CF-1 3



CF-1 4



IMEXAO
TEL: +(86)186-8880-7020

CF-1 5



+ (86) 5186-8880-7020

CF-1 6



15

+ (86) 186-8880-7020

CF-1 7



CF-1 8



CF-1 9



CF-1 10



CF-1 11



CF-1 12



+ (86) 186-8880-7020

CF-1 13



CF-1 14



CF-1 15



CF-1 16



CF-1 17



CF-1 18



CF-1 19



+ (86) 186-8880-7020

CF-1 20



CF-1 21



CF-1 22



+ (86) 186-8880-7020

CF-1 23



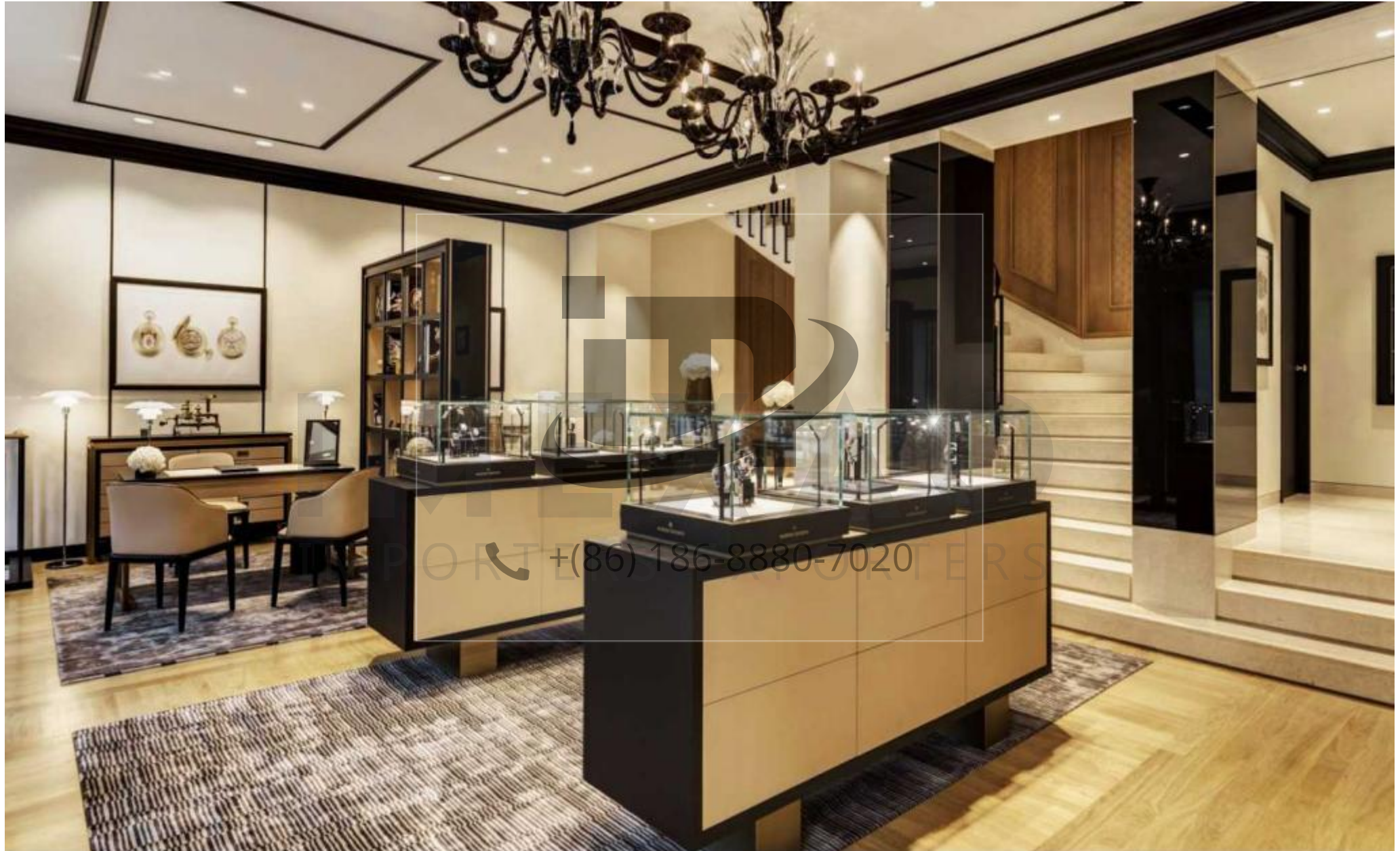
CF-1 24



CF-1 25



CF-1 26



CF-1 27



+ (86) 186-8880-7020

CF-1 28



CF-1 29



CF-1 30



CF-1 31



IMPORTERS EXPORTERS + (86) 186-8880-7020

CF-1 32



+ (86) 186-8880-7020

CF-1 33



CF-1 34



CF-1 35

KP-01



KP-02



KP-03



KP-04



KP-05



+ (86) 186-8880-7020

KP-06

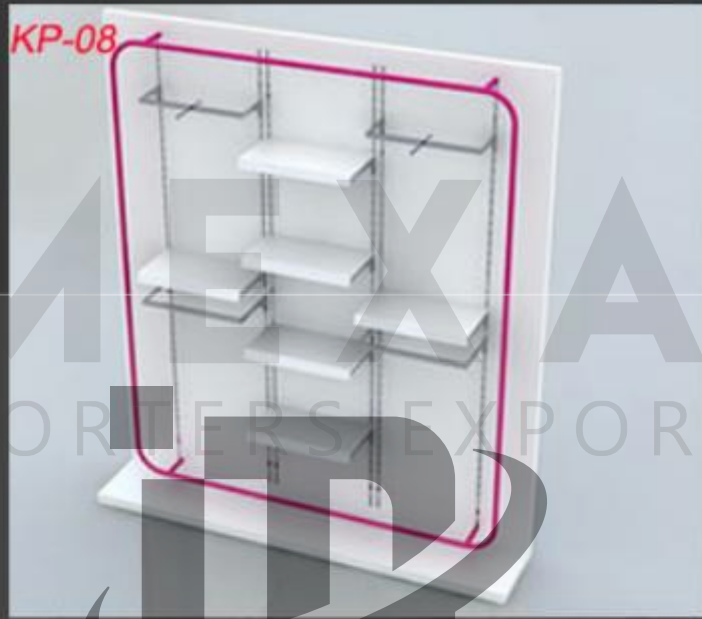


CF-2 1

KP-07



KP-08



KP-09



KP-10



KP-11



KP-12



CF-2 2

KC-01



KC-02



KC-03



KC-04



KC-05



KC-06



+ (86) 186-8880-7020

CF-2 3

KC-07



KC-08



ZJF
ORIGINAL
WORKS SHOW

KC-09



KC-10



KC-11



+86 186-8880-7020

KC-12



CF-2 4

KP-01



KP-02



KP-03



KP-04



KP-05



+ (86) 186-8880-7020

KP-06



CF-2 5

KP-07



KP-08



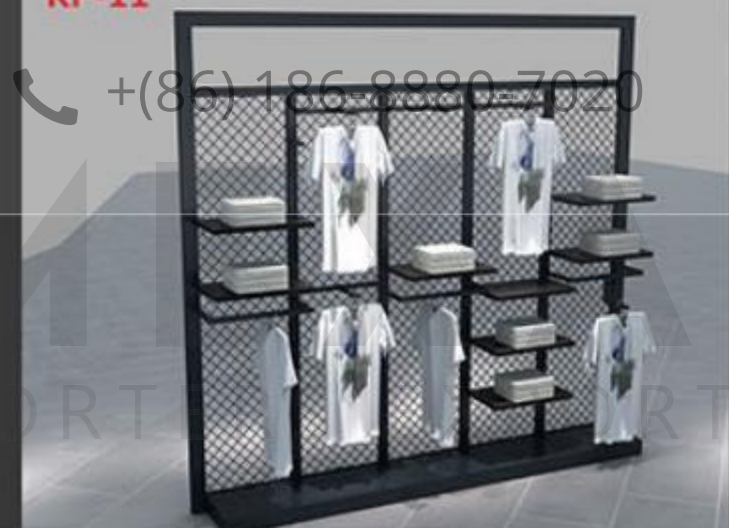
KP-09



KP-10



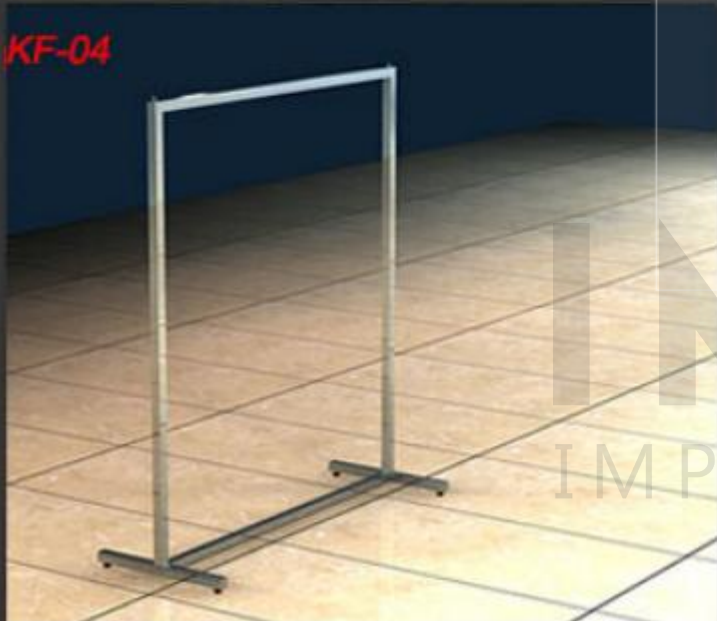
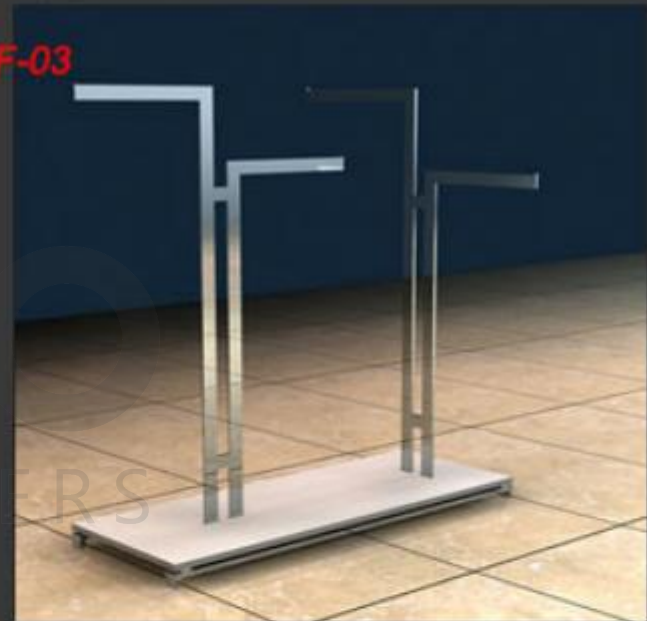
KP-11



KP-12



CF-2 6



CF-27

KF-07



KF-08



KF-09



KF-11



KF-11



+ (86) 186-8880-7020

KF-12



CF-2 8

KF-13



KF-14



KF-15



KF-16



KF-17

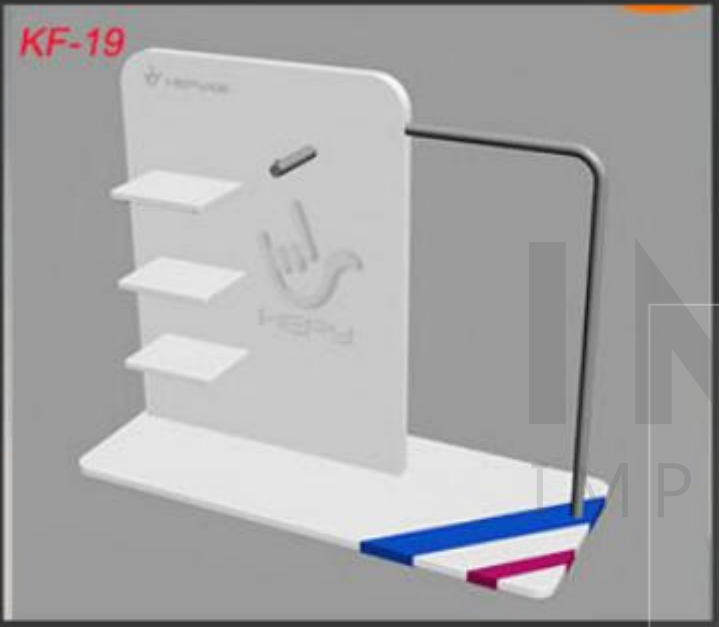


KF-18

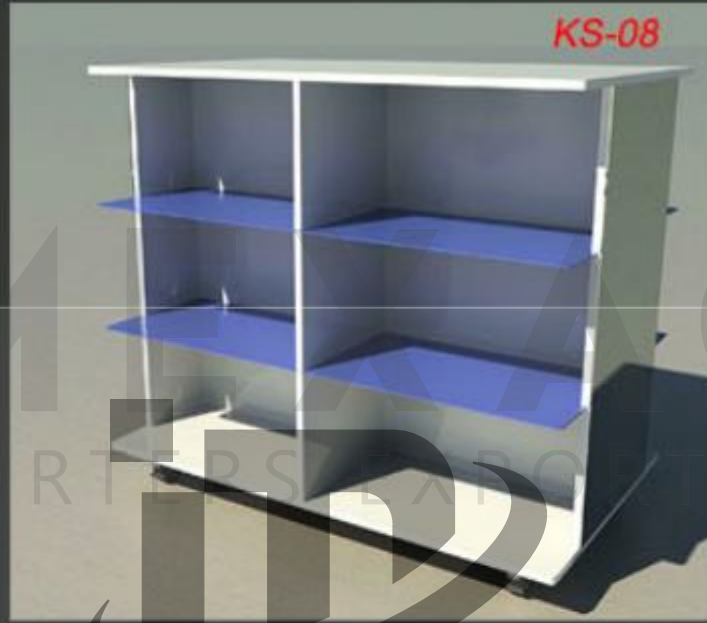


CF-2 9

+ (86) 186-8880-7020



CF-2 10

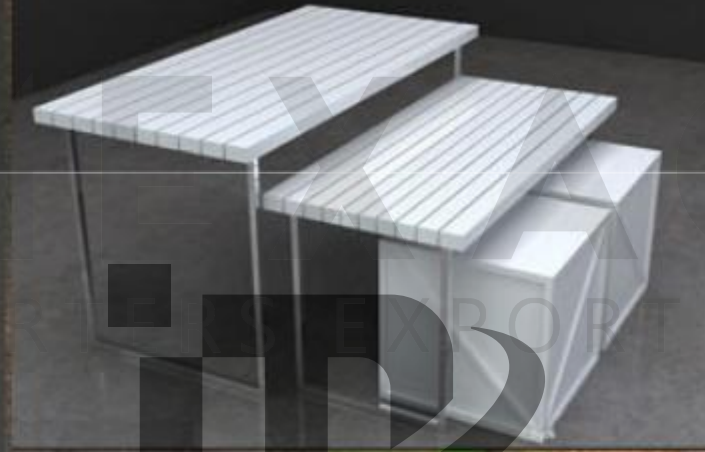


CF-2 11

KT-01



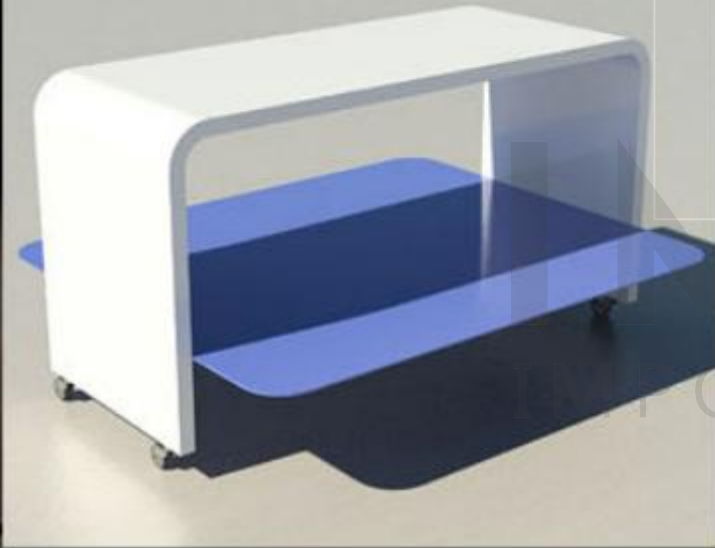
KT-02



KT-03



KT-04



KT-05



+ (86) 186-8880-7020

KT-06



CF-2 12

KT-07



KT-08



KT-09



KT-10



KT-11



+ (86) 186-8880-7020

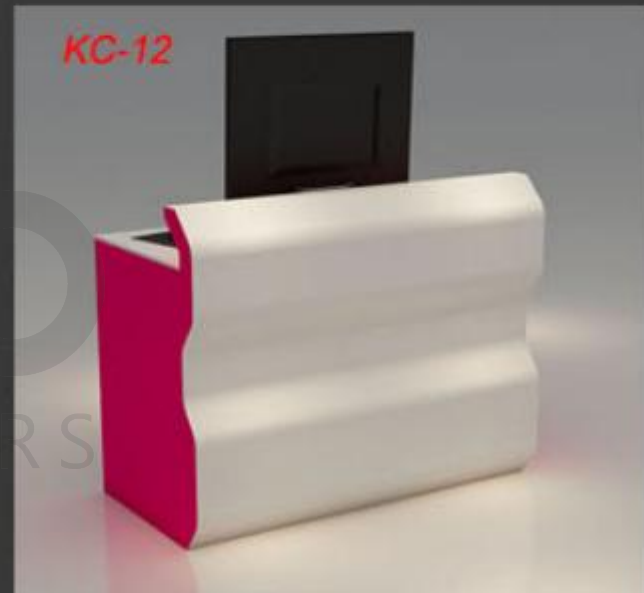
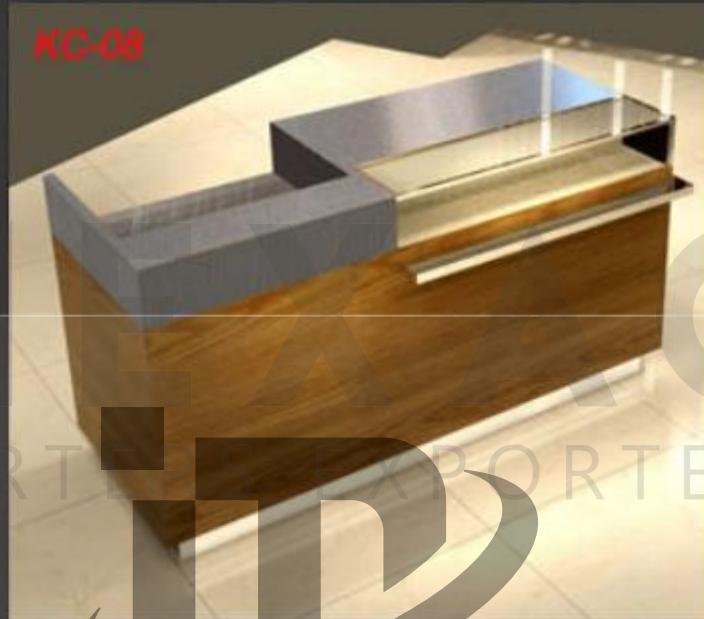
KT-12



CF-2 13(2)



CF-2 13



+ (86) 186-8880-7020

CF-2 14

KG-01



KG-02



KG-03



KG-04



KG-05



+ (86) 186-8880-7020

KG-06





"Let us help to build your dreams"

CF-3 011



"Let us help to build your dreams"

CF-3 028



CF-3 039



"Let us help to build your dreams"



"Let us help to build your dreams"

CF-3 041



+(86) 186-8880-4020



"Let us help to build your dreams"

CF-3 042



"Let us help to build your dreams"

CF-3 050



"Let us help to build your dreams"

CF-3 070



CF-3 071



"Let us help to build your dreams"



CF-3 10



"Let us help to build your dreams"





"Let us help to build your dreams"

CF-3 12



+ (86) 186-8880-7020



"Let us help to build your dreams"

CF-3 15



CF-3 18



"Let us help to build your dreams"



CF-3 2



"Let us help to build your dreams"



CF-3 21



"Let us help to build your dreams"



CF-3 4



"Let us help to build your dreams"



CF-3 5



"Let us help to build your dreams"



CF-3 57



"Let us help to build your dreams"



"Let us help to build your dreams"

CF-3 58



CF-3 59



"Let us help to build your dreams"



+ (86) 186-8880-7026



CF-3 60

"Let us help to build your dreams"



"Let us help to build your dreams"

CF-3 61



超市货架系列采用全钢结构和先进的表面处理工艺，色泽典雅永不锈。标准化的承重接口与无限组合形式，或长或短，或高或矮，单排或双排，广泛适应大小不同和场地形状不一的超市空间，助你轻松规划出超市最具展示效果的货品陈列格局，提升超市的形象品位。

Supermarket storage rack is applied whole steel structure and progressive facial treatment technique, elegant gloss and durable rustproof. Standardized weight support joint and unlimited combination modes, maybe long or short, maybe high or low, maybe single row or double rows, broadly meets the super market spaces with different sizes and sites.

+ (86) 186-8880-7020

超市货架系列
SUPERMARKET GONDOLA

SERIES

CF-4 3



B23 型超市货架



规格及技术参数 Specification & Technical Parameter

型号 Item	规格 Specification	零件材料厚度 Component Material Thickness	表面处理 Surface Process
B23-型单面架 B23-Wall gondola	长(L) 450W	高(H) 1350H	全部零件均为环氧树脂静电处理,涂层厚度为60--80微米,静电喷粉附着力度达到GB2865-88标准中0级。 Epoxy resin static electricity, process 60-80 um. Adhesive force GB2865-88 standard class 0.
	900L 500W	1450H	
	550W	1750H	
B23-型双面架 B23-Island gondola	450W+450W	1350H	
	1190L 500W+500W	1450H	
	550W+500W	1750H	
		2450H	

材料: 优质冷轧板 Material: High quality CRS

整架额定承重量: 单、双面架每面承重350kg/面(整架额定承重不含底层板承重量) 底层板额定承重150kg/层; 层板而定承重随层板的宽度而变化; 450式层板额定承重量120kg/层 500式层板额定承重量90kg/层; 550式层板额定承重量70kg/层。

Gondola Loading capacity: Each side of wall/stand unit's loading capacity is 350kg/side (Gondola Loading capacity excludes the bottom shelf), bottom shelf is 150kg/layer; Loading capacity changes from width. 450w: 120 kg/layer, 500w: 90kg/layer; 550w: 70kg/layer.

注: 以上规格尺寸及技术参数仅提供参考, 最终以实物为准。
Remark: The above specification and technical parameter only for reference, please make the object the standard.

卖场实图 ON-SITE STORE VIEW

CF-4 4

B25 型超市货架



规格及技术参数 Specification & Technical Parameter

型号 Item	规格 Specification			零件材料厚度 Component Material Thickness	表面处理 Surface Process
	长(L)	宽(W)	高(H)		
B25-型单面架 B25-Wall gondola	900L	450W	1350H 1550H	1). 立柱 Upright : 80*40*2.3mm 2). 基脚 Base : 80*40*2.3mm 3). 背网 Wire mesh : Φ3.7mm	环氧树脂静电处理, 厚度为 60-80 微米, 静电喷粉附着力 GB2865-88 标准 0 级。 Epoxy resin static electricity, process 60-80 um. Adhesive force GB2865-88 stand ard class 0.
B25-型双面架 B25-Island gondola	1190L	450W+450W	1750H 2150H	4). 托臂 Bracket : 2.5mm 5). 木层板 (中纤板) Wooden shetf (MDF) : Φ15mm	

材料: 优质冷轧板 Material: High quality CRS

整架额定承重量: 单面承重 240kg/ 架; 双面架 480kg/ 架。层板额定承重量: 底板: 80kg/ 层; 350w 层板承重量 30kg/ 层。
Gondola Loading capacity: wall unit 240kg/unit, island unit 480kg/unit. Shelf's loading capacity: bottom shelf: 80kg/layer; middle shelf: 30kg/layer.

卖场实图 ON-SITE STORE VIEW

CF-4 5

注: 以上规格尺寸及技术参数仅提供参考, 最终以实物为准。
Remark: The above specification and technical parameter only for reference, please make the object the standard.

B26 型超市货架



规格及技术参数 Specification & Technical Parameter

型号 Item	规格 Specification			零件材料厚度 Component Material Thickness		表面处理 Surface Process
	长(L)	宽(W)	高(H)			
B26- 型单面架 B26-Wall gondola	900L	400W	1350H	1). 立柱 Upright :	80*30*2.3mm	全部零件均为环氧树脂静电处理, 涂层厚度为 60--80 微米, 静电喷粉附着力达到 GB2865-88 标准中 0 级。 Epoxy resin static electricity, process 60-80 um. Adhesive force GB2865-88 stand ard class 0.
		450W	1450H	2). 基脚 Base :	75*25*1.8mm	
500W	1750H	3). 层板 Shelf :	0.7mm			
B26- 型双面架 B26-Island gondola	1190L	400W+400W	1950H	4). 前板 Kickplate :	0.7mm	
		450W+450W	2150H	5). 背板 Back panel :	0.6mm	
		500W+500W	2350H	6). 托臂 Bracket :	2.5mm	

+ (86) 186-8880-7020

材料: 优质冷轧板 Material: High quality CRS

整架额定承重量: 单、双面架每面承重 350kg/面 (整架额定承重不含底层板承重量); 底层板额定载重 150kg/层; 层板而定承重量随层板的宽度而变化; 450 式层板额定承重量 120kg/层 500 式层板额定承重量 90kg/层; 550 式层板额定承重量 70kg/层。

Gondola Loading capacity: Each side of wall/stand unit's loading capacity is 350kg/side (Gondola Loading capacity excludes the bottom shelf), bottom shelf is 150kg/layer; Loading capacity changes from width. 450w: 120 kg/layer, 500w: 90kg/layer; 550w: 70kg/layer.

注: 以上规格尺寸及技术参数仅供参考, 最终以实物为准。
Remark: The above specification and technical parameter only for reference, please make the object the standard.

B96 型超市货架



规格及技术参数 Specification & Technical Parameter

型号 Item	规格 Specification			零件材料厚度 Component Material Thickness	表面处理 Surface Process
	长(L)	宽(W)	高(H)		
B96-型单面架 B96-Wall gondola	700L	350W	1200H	1). 双面立柱 Island Gondola : 50*25*1.8mm	环氧树脂静电处理, 厚度为60-80微米, 静电喷粉附着力 GB2865-88 标准 0 级。 Epoxy resin static electricity, process 60-80 um. Adhesive force GB2865-88 stand ard class 0.
		400W	1360H	2). 单面立柱 wall Gondola : 25*25*1.8mm	
		450W	1500H	3). 基脚 Base : 1.2mm	
				4). 层板 Shelf : 0.6mm	
B96-型双面架 B96-Island gondola	900L	350W+350W	1600H	5). 前板 Kickplate : 0.6mm	
		400W+400W	1800H	6). 背板 Back panel : Φ3.0mm	
		450W+400W		7). 托臂 Bracket : 2.5mm	

+ (86) 186-8880-7020

材料: 优质冷轧板 Material: High quality CRS

单面架额定承重量: 110Kg/面, 双面架额定承重量: 90kg/面, (整架额定承重不含底层板承重量)

Wall unit's loading capacity: 110kg/side, Island unit's loading capacity is 90kg/side, Gondola loading capacity excludes the bottom shelf's loading capacity.

注: 以上规格尺寸及技术参数仅供参考, 最终以实物为准。
Remark: The above specification and technical parameter only for reference, please make the object the standard.

卖场实图 ON-SITE STORE VIEW

B11 型超市货架



卖场实图 ON-SITE STORE VIEW



规格及技术参数 Specification & Technical Parameter

型号 Item	规格 Specification			零件材料厚度 Component Material Thickness	表面处理 Surface Process
	长(L)	宽(W)	高(H)		
B11-型单面架 B11-Wall gondola	900L	450W	1520H	1). 立柱 Upright : 1.8mm 2). 基脚 Base : 1.5mm 3). 背网 Wire mesh : Φ3.7mm 4). 前板 Kickplate : 0.7mm	环氧树脂静电处理, 厚度为 60-80 微米, 静电喷粉附着力 GB2865-88 标准 0 级。 Epoxy resin static electricity, process 60-80 um. Adhesive force GB2865-88 stand ard class 0.
B11-型双面架 B11-Island gondola		450W+450W	1800H	5). 层板 Shelf : 900L 0.7mm 6). 层板 Shelf : 1190L 0.8mm 7). 托臂 Bracket : 900L 2.0mm 8). 托臂 Bracket : 1190L 2.5mm	
		550W+550W	2000H		

材料: 优质冷轧板 Material: High quality CRS

整架额定承重量: 单、双面架每面承重 230kg/面 (整架额定承重不含底层板承重量) 底层板额定载重 120kg/层; 层板而定承重量随层板的宽度而变化; 350 式层板额定承重量 80kg/层 450 式层板额定承重量 60kg/层。

Gondola Loading capacity: Each side of wall/stand unit's loading capacity is 230kg/side (Gondola Loading capacity excludes the bottom shelf), bottom shelf is 120kg/layer; Loading capacity changes from width.350w: 80 kg/layer,500w: 90kg/layer; 450w: 60kg/layer.

注: 以上规格尺寸及技术参数仅提供参考, 最终以实物为准。
Remark: The above specification and technical parameter only for reference, please make the object the standard.



卖场实图 ON-SITE STORE VIEW

B13 型超市货架



规格及技术参数 Specification & Technical Parameter

型号 Item	规格 Specification	零件材料厚度 Component Material Thickness	表面处理 Surface Process
B13- 型单面架 B13-Wall gondola	900L	宽(W) 450W 高(H) 1520H	1). 立柱 Upright : 1.8mm 2). 基脚 Base : 1.5mm 3). 层板 Shelf : 0.7mm 环氧树脂静电处理, 厚度为 60-80 微米, 静电喷粉附着力 GB2865-88 标准 0 级。
	1190L	宽(W) 450W+450W 高(H) 1800H	
B13- 型双面架 B13-Island gondola	1190L	宽(W) 450W+450W 高(H) 1800H	4). 前板 Kickplate : 0.8mm 5). 背板 Back panel : 0.8mm Epoxy resin static electricity, process 60-80 um. Adhesive force GB2865-88 stand ard class 0.
		宽(W) 550W+550W 高(H) 2000H	

材料: 优质冷轧板 Material: High quality CRS

整架额定承重量: 单、双面架每面承重 230kg/面; 层板额定承重量: 底板: 120kg/层; 350w 层板承重 80kg/层; 450w 层板额定承重量 60/层。

Gondola Loading capacity: Each side of Wall/Island unit's loading capacity is 350kg/side, bottom shelf: 120kg/layer, 350W: 80kg/layer, 450W: 60kg/layer.

注: 以上规格尺寸及技术参数仅提供参考, 最终以实物为准。
Remark: The above specification and technical parameter only for reference, please make the object the standard.



丰富而整洁的超市空间，总要有合理的点缀才能显出灵性与品位。超市配套系列，每款皆为独立设计，融收纳与展示功能于一体，无论是促销酬宾还是充分利用空间边角位，又或是陈列小种类商品，我们的配套货架产品，都能为您的超市空间营造最具档次的展示效果，展现你非凡兴旺的经营理念。

Plentiful and tidy supermarket space always display soul and taste with reasonable ornament. Supermarket collocation series is unique design in every model, and melt with storage and display function together into one. Whatever promotional sales or fully use of space utility or tiny commodities display, our supermarket collocation can fully satisfy high class display effect required by your supermarket space, made your extraordinary and flourishing business concept.

+ (86) 186-8880-7020

超市配套系列
SUPERMARKET
COLLOCATING SERIES

CF-4 10





B53 型三向小货架

规格(单位: mm)
900L*350W*1100H



B52 型三向小货架

规格(单位: mm)
760L*1145W*1200H



H45 型笼架

规格(单位: mm)
1240L*840W*850H



H42 型笼架

规格(单位: mm)
1000L*760W*800H



B54 型四向小货架

规格(单位: mm)
1000L*1000W*1200H



M071 型小货架

规格(单位: mm)
双面架: 900L*(350W+350W)*1350H
端架: 800L*350W*1350H



M041 型木促销

规格(单位: mm)
1000L*1000W*850H



M88 促销台

规格(单位: mm)
1200L*1000W*1050H

CF-4 11

+ (86) 186-8880-7020



H21 型四层网兜斜口笼架

◆ 规格 (单位: mm)
780L*535W*1500H



S19 型蔬果架

◆ 规格 (单位: mm)
1250L*1090W*1200H



S12 型蔬果架

◆ 规格 (单位: mm)
1668L*460W*1180H



E13 型圆形服装架

◆ 规格 (单位: mm)
Φ832*1100H-1810H
Φ932*1100H-1810H



S17 型三层阶梯蔬果架

◆ 规格 (单位: mm)
1200L*980W*1200H



S16 型蔬果架

◆ 规格 (单位: mm)
1250L*980W*1200H



E11 型方形服装架

◆ 规格 (单位: mm)
成人: 850L*850W*1300H-1800H
儿童: 600L*600W*900H-1450H



E12 型万字服装架

◆ 规格 (单位: mm)
750L*750W*1125H-1800H

+ (86) 186-8880-7020

CF-4 12

IMEXAO

IMPORTERS EXPORTERS

IMEXAO

IMPORTERS EXPORTERS



K21型购物车

规格(单位: mm)
755L*465W*930H



K22型人字购物车

规格(单位: mm)
830L*505W*920H



K12型二层提篮式购物车

规格(单位: mm)
560L*500W*950H

E11型购物篮

规格(单位: mm)
16升: 400L*300W*200H
28升: 480L*320W*260H



+ (86) 186-8880-7020

手推车 SHOPPING CART

自从第一辆超市手推车诞生以来, 迅速成为人类使用得最多的四轮车辆, 在无数人的不停使用中, 手推车的质量与造型也影响着超市在消费者心中的形象。为此, 我们设计了一系列不同风格的便于储存和使用的超市手推车, 从万向轮的超强品质到扶手握把的人性化设计, 每一个细节的努力用心, 着力使消费者对超市服务留下深刻印象。

Since first shopping cart was born, it fast developed the high used four-wheel carriage in human history. In countless application, shopping cart quality and modeling deeply affected consumers' impression to supermarket. For that matter, we design different styles of supermarket shopping cart intended for storage and utility. From Omni-directional wheel superb quality and humanized design of handrails, endeavor of every detail is spared to impress consumers for supermarket service.



M211 型收银台

规格(单位: mm)
1280L*470W*770H



F27 型收银台

规格(单位: mm)
1500L*1110W*850H



F26 型快速收银台

规格(单位: mm)
1080L*600W*830H



收银台 CASHIER COUNTER

收银台不仅是超市最聚财的地方,同时也是超市对外服务的重要窗口之一,一款时尚并且契合超市经营文化的收银台,会承载着超市的文化信息渗入消费者心中,而一款功能齐全、安排合理的收银台,更有利于缩减客人付费的时间,提高销售效率,成为超市创收的理想载体。

Cashier counter is most fortune gathering of supermarket as well as most important supermarket window of external service. A fashionable and supermarket business culture requirement satisfied cashier counter would deliver supermarket culture information to consumers' heart. And a comprehensive and reasonable allocated cashier counter is more beneficial to save cashier time for guests as well as improve sale efficiency, being ideal supermarket benefit creation platform deck.

兴达人,注重研究世界各地人群在超市消费的不同习惯,以科学的分析和严谨的统筹归纳出最精准的数据,以此为基础融合人体工程学理念设计出一系列不同风格、功能的收银台家具产品,不仅美观实用,更兼具功能与坚固耐用于一体,在唯美展示超市企业的同时,提高收银效率和有效降低客人排除付费的时间,大大提升超市的服务质量。

Xingda associates stress on research of global different consumption hobbies from different groups of worldwide places, summarize most accurate data by scientific analysis and meticulous planning. At this basic, integrate human engineering concept to design series of different styles and functions cashier counters furniture which are both aesthetic and pragmatic and functional and durable lifetime. When displaying the supermarket with beauty, improve cashier efficiency and cut down cashier payment times, greatly upgrade supermarket service quality.



XD-081 型收银台

规格(单位: mm)
2200L*1150W*850H



XD-075 型收银台

规格(单位: mm)
1500L*1100W*850H

+ (86) 186-88807020

CF-4 14

出入机 INTELLIGENT CHANNEL BRAKE

现代化的超市服务，经营者不能限制顾客的人身自由，但是我们却有必要合理规划顾客的行为节奏，自动化的出入机就成为了现代超市的理想帮手。单门式出入机，体积小，安装方便，内置先进感应装置，自动开合，动作轻巧流畅，绝不伤害身体，加上亮丽的不锈钢外壳，使其成为超市门口的一道靓丽风景。

Operators are out of capability to constraint customers' life freedom in modernization supermarket service. But we have reasonable requirement to plan their behaviors and rhythm. Auto intelligent channel brake shall be the best assistant of modern supermarket. Single-door intelligent channel brake is tiny shape and easy installed, inside progressive sensor device, auto open-and-close, and smart and fluent operation, not harmful to human body, plus glamorous stainless steel appearance, being a nice view of supermarket exit.



R33 型圆柱机械式出入口机

◆ 规格 (单位: mm)
1160L*1020W*1120H

双门出入机，沿着单门出入机的所有优点，特别适合于客流量较大的大型超市使用，双门门各有独立感应器和开关系统，能够单独开合放行，先进的感应阻尼装置，碰到体会自动停止，绝不会造成任何伤害或疼痛感觉，体现细微入心的超市服务理念。

Double-door intelligent channel brake inherits all advantages of single-door style, especially suitable for high visitors flow rate supermarket. Double-door brake possesses individual sensor and power system, available to open and close separately. Advanced sensor damping device stops once touches human body, never hurt or pain caused, displaying considerate caring service concept of supermarket.



R32 型机械式出入口机

◆ 规格 (单位: mm)
2300L*1180W*1095H



C51 型单面图书架

◆ 规格 (单位: mm)
(2*1800L+500L)*400W*2800H



C52 型图书促销台

◆ 规格 (单位: mm)
(900L+900L)*800W*1400H



C53 型图书促销台

◆ 规格 (单位: mm)
800L*800W*950H



C54 型单面图书架

◆ 规格 (单位: mm)
(900L+1200L)*400W*2000H

+ (86) 186-8880-7020



仓储架系列，以加厚的优质角钢结合科学的承重结构精制而成，货架造型朴实，坚固耐用，合理的空间分布和标准化的组合方式，助经营者营造现代超市的仓储空间。货架两端及背部的加强筋，兼具拦阻格挡功能，在降货架自身重量的同时，又增加了承重强度，无论是大件货物储藏还是小件杂物的归类收纳，兴达仓储架系列产品，都能轻松助你实现。

Warehouse storage rack series is refined manufactured with enhanced thick superior angle steel combined with scientific weight support structure. Modest modeling and durability of storage rack, reasonable space distribution and standardized combination modes assist to build warehouse storage space of modern supermarket. Stiffener of two storage rack ends and back is both of rack block function and self rack weight of deduction as well as enhancing weight support strength. Whatever large storage collection or tiny miscellaneous storage, Xingda warehouse storage rack series product assists to make it happen.



仓储架系列
STORAGE

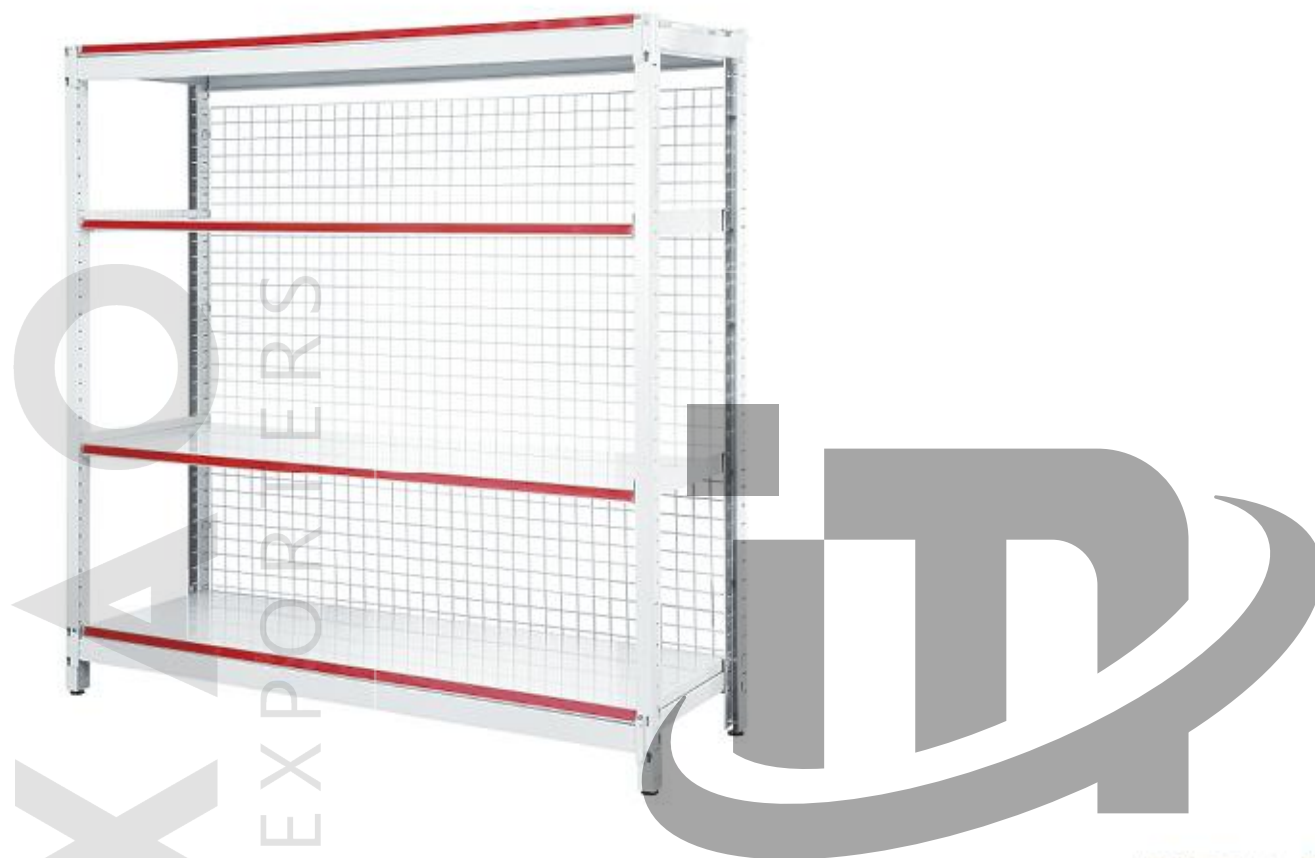
RACK SERIES

IMPORTERS

+ (86) 186-8880-7020

CF-4 16

A12 轻型仓储货架



规格及技术参数 Specification & Technical Parameter

型号 Item	规格 Specification			零件材料厚度 Component Material Thickness	表面处理 Surface Process
	长(L)	宽(W)	高(H)		
A12- 型仓储货架	1240L	450W	1870H	1). 立柱 Upright : 2.0mm	环氧树脂静电处理, 厚度为 60-80 微米, 静电喷粉附着力 GB2865-88 标准 0 级。 Epoxy resin static electricity, process 60-80 um. Adhesive force GB2865-88 stand ard class 0.
A12-Wall gondola		610W	2120H	2). 长横条 Base : 2.0mm	
				3). 层板 Shelf : 0.8mm	
				4). 侧条 Side slat : 2.0mm	
	1500L	800W	2420H	5). 托臂 Bracket : 1.5/2.0mm	

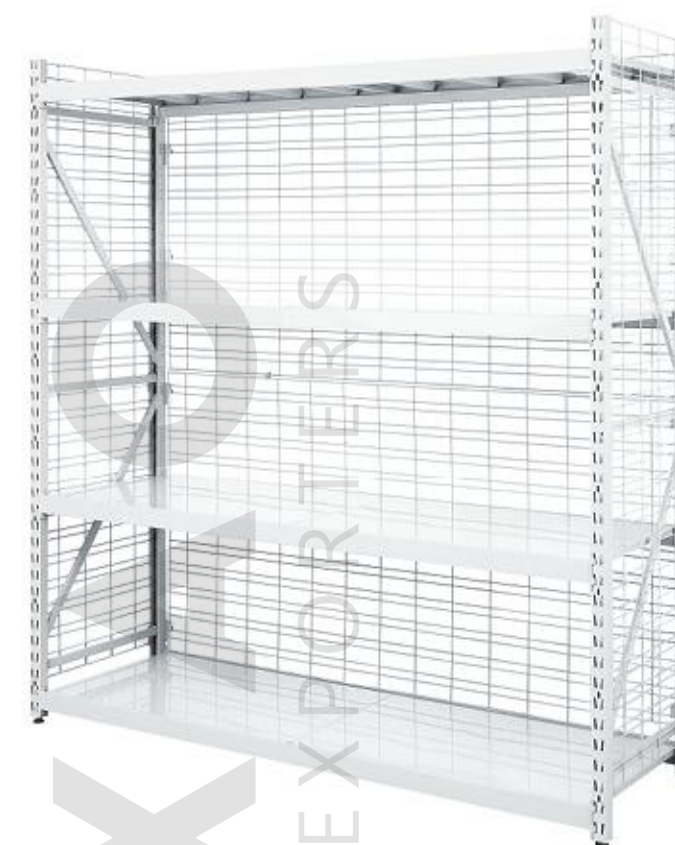
材料: 优质冷轧板 Material: High quality CRS

整架额定承重量: 承重 800kg/ 套; 每层板额定承重量 200kg/ 层。

Gondola Loading capacity: 800kg/set, every layer load capability 200kg/layer.

注: 以上规格尺寸及技术参数仅供参考, 最终以实物为准。
Remark: The above specification and technical parameter only for reference, please make the object the standard.

A15 轻型仓储货架



规格及技术参数 Specification & Technical Parameter

型号 Item	规格 Specification			零件材料厚度 Component Material Thickness	表面处理 Surface Process
	长(L)	宽(W)	高(H)		
A15- 型仓储货架	1200L	450W	2000H	1). 立柱 Upright : 1.5mm	环氧树脂静电处理, 厚度为 60-80 微米, 静电喷粉附着力 GB2865-88 标准 0 级。 Epoxy resin static electricity, process 60-80 um. Adhesive force GB2865-88 stand ard class 0.
A15-Wall gondola				2). 横梁 Beam : 1.2mm	
				3). 层板 Shelf : 0.7mm	
				4). 横梁挂钩 Beam cross hook : 2.5mm	
				5). 背网 / 侧网 Mesh panel / side mesh : Φ 4.0mm	
				6). 横梁拉杆 Barcross : 2.0mm	
				7). 拉杆 Bar : 26*13*1.0mm	

材料: 优质冷轧板 Material: High quality CRS

整架额定承重量: 承重 800kg/ 套; 每层板额定承重量 200kg/ 层。

Gondola Loading capacity: 800kg/set, every layer load capability 200kg/layer.

注: 以上规格尺寸及技术参数仅供参考, 最终以实物为准。
Remark: The above specification and technical parameter only for reference, please make the object the standard.

A21 中型仓储货架



规格及技术参数 Specification & Technical Parameter

型号 Item	规格 Specification			零件材料厚度 Component Material Thickness	表面处理 Surface Process
	长(L)	宽(W)	高(H)		
A21- 型仓储货架	1500L	600W	2000H	1). 立柱 Upright : 1.8/2.0mm 2). 横梁 Beam : 1.8/2.0mm 3). 层板 Shelf : 0.8mm	环氧树脂静电处理, 厚度为 60-80 微米, 静电喷粉附着力 GB2865-88 标准 0 级。 Epoxy resin static electricity, process 60-80 um. Adhesive force GB2865-88 stand ard class 0.
A21-Wall gondola	2000L	800W	2500H	4). 横梁挂钩 Beam cross hook : 3.0mm 5). 横梁连杆 Bar cross : 2.0mm	
	2500L	1000W	3000H	6). 拉杆 Bar : 1.5mm	

材料: 优质冷轧板 Material: High quality CRS

整架额定承重量: 承重 4000kg/套; 每层板额定承重量 500kg/层。

Gondola Loading capacity: 4000kg/set, every layer load capability 500kg/layer.

A23 中型仓储货架



规格及技术参数 Specification & Technical Parameter

型号 Item	规格 Specification			零件材料厚度 Component Material Thickness	表面处理 Surface Process
	长(L)	宽(W)	高(H)		
A23- 型仓储货架	1500L	600W	2000H	1). 立柱 Upright : 1.8/2.0mm 2). 横梁 Beam : 1.8/2.0mm 3). 层板 Shelf : 0.8mm	环氧树脂静电处理, 厚度为 60-80 微米, 静电喷粉附着力 GB2865-88 标准 0 级。 Epoxy resin static electricity, process 60-80 um. Adhesive force GB2865-88 stand ard class 0.
A23-Wall gondola	2000L	800W	2500H	4). 横梁挂钩 Beam cross hook : 3.0mm 5). 横梁连杆 Bar cross : 2.0mm	
	2500L	1000W	3000H	6). 拉杆 Bar : 1.5mm	

材料: 优质冷轧板 Material: High quality CRS

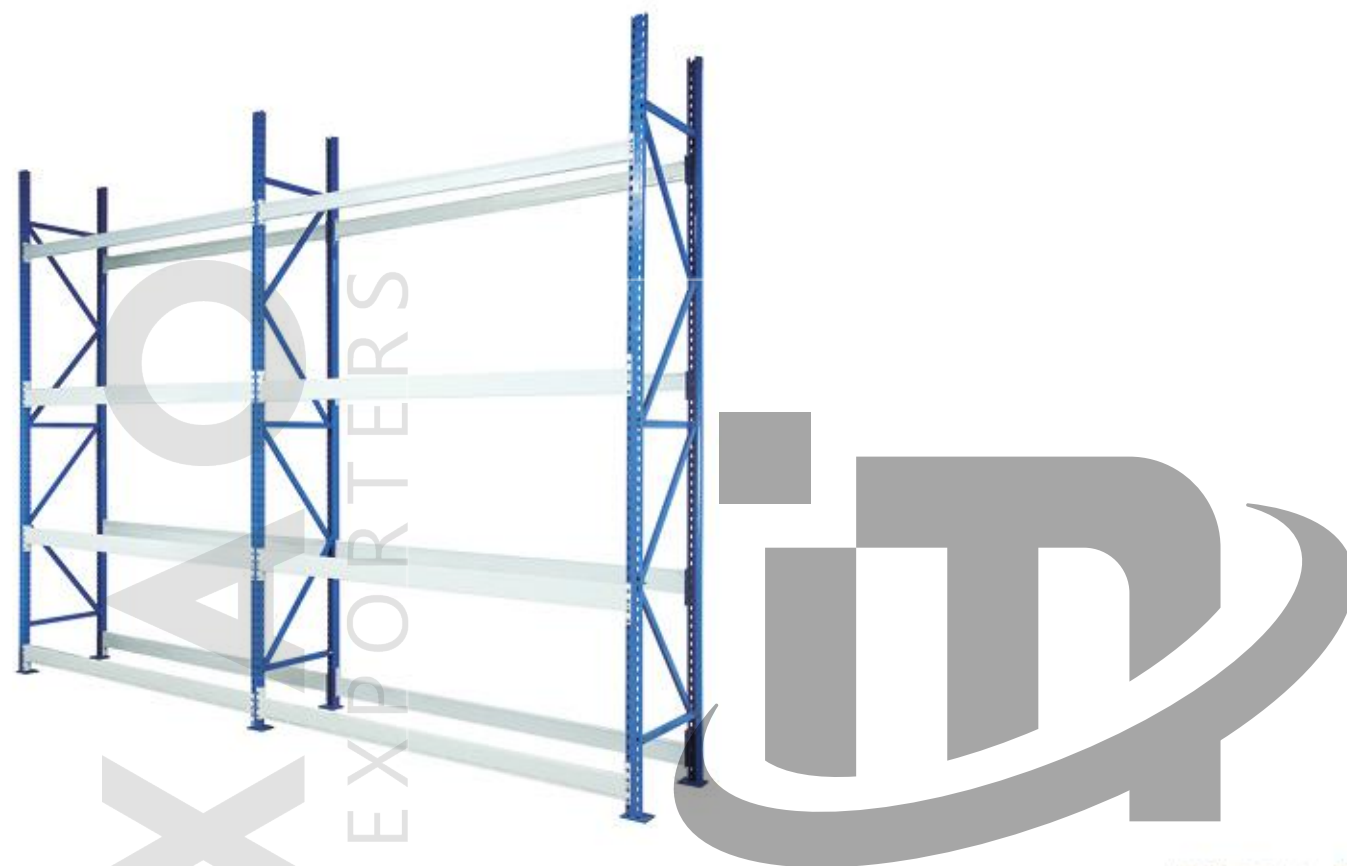
整架额定承重量: 承重 4000kg/套; 每层板额定承重量 1000kg/层。

Gondola Loading capacity: 4000kg/set, every layer load capability 1000kg/layer.

注: 以上规格尺寸及技术参数仅供参考, 最终以实物为准。
Remark: The above specification and technical parameter only for reference, please make the object the standard.

注: 以上规格尺寸及技术参数仅供参考, 最终以实物为准。
Remark: The above specification and technical parameter only for reference, please make the object the standard.

A25 重型仓储货架



规格及技术参数 Specification & Technical Parameter

型号 Item	规格 Specification			零件材料厚度 Component Material Thickness	表面处理 Surface Process
	长(L)	宽(W)	高(H)		
A25- 型仓储货架	1500L	800W	2000H 2500H	1). 立柱 Upright : 2.0mm	环氧树脂静电处理, 厚度为 60-80 微米, 静电喷粉附着力 GB2865-88 标准 0 级。 Epoxy resin static electricity, process 60-80 um. Adhesive force GB2865-88 stand ard class 0.
A25-Wall gondola	2000L		3000H 3500H	2). 横梁 Base : 2.0mm	
			4000H	3). 横梁挂钩 Beam cross hook : 2.5mm	
	2500L	1100W	5000H	4). 拉杆 Bar : 40*20*2.0mm	

材料: 优质冷轧板 Material: High quality CRS

整架额定承重量: 承重 4000kg/套; 每层板额定承重量 1000kg/层。

Gondola Loading capacity: 4000kg/set, every layer load capability 1000kg/layer.

注: 以上规格尺寸及技术参数仅供参考, 最终以实物为准。
Remark: The above specification and technical parameter only for reference, please make the object the standard.

A3 重型仓储货架系列



规格及技术参数 Specification & Technical Parameter

型号 Item	规格 Specification			零件材料厚度 Component Material Thickness	表面处理 Surface Process
	长(L)	宽(W)	高(H)		
A3- 型仓储货架	1500L	800W	2000H 2500H	1). 立柱 Upright : 2.0mm	环氧树脂静电处理, 厚度为 60-80 微米, 静电喷粉附着力 GB2865-88 标准 0 级。 Epoxy resin static electricity, process 60-80 um. Adhesive force GB2865-88 stand ard class 0.
A3-Wall gondola	2000L		3000H 4000H	2). 横梁 Base : 2.0mm	
			5000H	3). 层板 Shelf : 0.8mm	
	2500L	1100W	6000H	4). 横梁挂钩 Beam cross hook : 4.0mm	
	2700L			6). 横梁连杆 Bar cross : 2.0mm	
				4). 拉杆 Bar : 2.0mm	

材料: 优质冷轧板 Material: High quality CRS

A31 型: 横梁截面 100*45, 整架承重 8000kg/套; 每层板额定承重量 1000kg/层 (可放卡板)。

A32 型: 横梁截面 120*45, 整架承重 8000kg/套; 每层板额定承重量 1500kg/层 (可放卡板)。

A33 型: 横梁截面 140*45, 整架承重 8000kg/套; 每层板额定承重量 2000kg/层 (可放卡板)。

A34 型: 横梁截面 100*45, 整架承重 8000kg/套; 每层板额定承重量 1000kg/层 (可放卡板或 31mm 高钢层板)。

Model A31: Beam section 100*45, whole set load capability 8000kg/set, each layer load capability: 1000kg/layer (pallet capable to insert)

Model A32: Beam section 120*45, whole set load capability 8000kg/set, each layer load capability: 1500kg/layer (pallet capable to insert)

Model A33: Beam section 140*45, whole set load capability 8000kg/set, each layer load capability: 2000kg/layer (pallet capable to insert)

Model A34: Beam section 100*45, whole set load capability 8000kg/set, each layer load capability: 1000kg/layer (pallet capable to insert or 31 mm high steel board)

注: 以上规格尺寸及技术参数仅供参考, 最终以实物为准。
Remark: The above specification and technical parameter only for reference, please make the object the standard.



汽车配件系列货架，在延续普通货架方便组合等优点基础上，专门针对现代主流汽车用品的尺寸和形态进行个性设计，在极大增加货架的承重能力的同时，注重货架容积与展示产品的密切配合，充分发挥货架的使用效率，与专业展示功能，具有存取方便，展示美观等特点。

Auto accessories series rack continuing the basic advantage of ordinary convenient combination rack, intends for modern sizes and shapes of modern mainstream vehicle appliance to customized design, greatly enhances gondola's loading capacity capability as well as stresses on closely collocation of storage content and product display, fully applies storage utility rate and professional display functions, both placing convenience and aesthetic appearance.

+ (86) 186-8880-7020

汽车配件系列
AUTO ACCESSORIES

IMPORTERS EX
SERIES

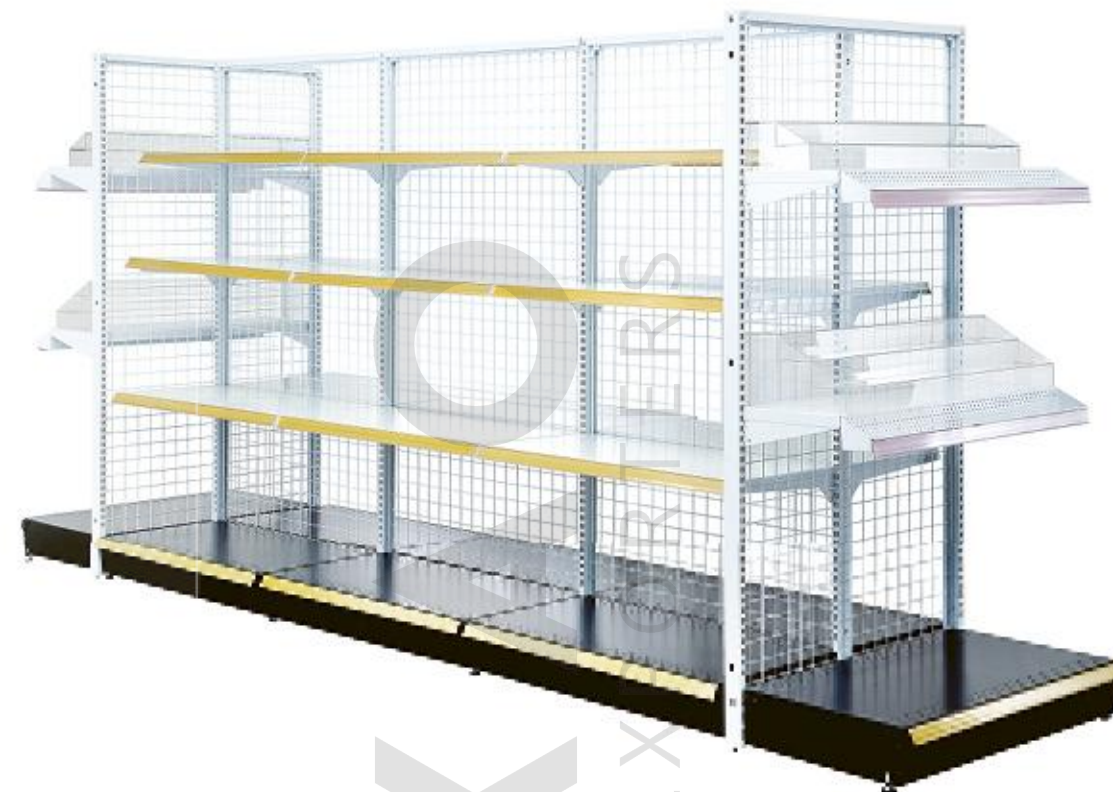


CF-4 20



卖场实图 ON-SITE STORE VIEW

B91 型汽车用品架



规格及技术参数 Specification & Technical Parameter

型号 Item	规格 Specification			零件材料厚度 Component Material Thickness	表面处理 Surface Process
	长(L)	宽(W)	高(H)		
B91-型单面架 B91-Wall gondola	700L	350W	1200H	1). 立柱 Upright : 50*25*1.8mm	环氧树脂静电处理, 厚度为 60-80 微米, 静电喷粉附着力 GB2865-88 标准 0 级。 Epoxy resin static electricity, process 60-80 um. Adhesive force GB2865-88 standard class 0.
		400W	1360H	2). 基脚 Base : 2.0mm	
		450W	1500H	3). 层板 Shelf : 0.8mm	
B91-型双面架 B91-Island gondola	900L	350W+350W	1600H	4). 前板 Kickplate : 0.8mm	
		400W+400W	1800H	5). 背网 Mesh mesh : $\Phi 3.7$ mm	
		450W+400W		6). 托臂 Bracket : 2.5mm	

材料: 优质冷轧板 Material: High quality CRS

整架额定承重量: 单、双面架每面承重 150kg/面 (整架额定承重不含底层板承重量); 底层板额定承重 100kg/层; 层板面定承重随层板的宽度而变化; 450 式层板额定承重量 150kg/层。

Gondola Loading capacity: Each side of Wall/Island unit loading capacity: 150kg/side (gondola Loading capacity excludes bottom shelf, bottom shelf: 100kg/layer; Loading capacity changes from width; 450w: 150 kg/layer.

注: 以上规格尺寸及技术参数仅供参考, 最终以实物为准。
Remark: The above specification and technical parameter only for reference, please make the object the standard.



卖场实图 ON-SITE STORE VIEW

B92 型汽车用品架



规格及技术参数 Specification & Technical Parameter

型号 Item	规格 Specification			零件材料厚度 Component Material Thickness	表面处理 Surface Process
	长(L)	宽(W)	高(H)		
B92- 型单面架 B92-Wall gondola	700L	350W	1200H	1). 立柱 Upright : 50*25*1.8mm 2). 基脚 Base : 2.0mm 3). 层板 Shelf : 0.8mm	环氧树脂静电处理, 厚度为 60-80 微米, 静电喷粉附着力 GB2865-88 标准 0 级。
		400W	1360H		
B92- 型双面架 B92-Island gondola	900L	350W+350W	1600H	4). 前板 Kickplate : 0.8mm 5). 背板 Back panel : Φ 3.7mm 6). 托臂 Bracket : 2.5mm	Epoxy resin static electricity, process 60-80 um. Adhesive force GB2865-88 standard class 0.
		400W+400W	1800H		
		450W+400W			

材料: 优质冷轧板 Material: High quality CRS

整架额定承重量: 单、双面架每面承重300kg/面(整架额定承重不含底层板承重量); 底层板额定承重100kg/层; 层板而定承重随层板的宽度而变化; 400 式层板额定承重量 40kg/层。

Gondola Loading capacity: Each side of Wall/Island unit loading capacity:300kg/side(gondola Loading capacity excludes bottom shelf, bottom shelf: 100kg/layer; Loading capacity changes from width; 400w: 40kg/layer.

注: 以上规格尺寸及技术参数仅供参考, 最终以实物为准。
Remark: The above specification and technical parameter only for reference, please make the object the standard.



N249 型座垫架

◆ 规格 (单位: mm)
1836L*660W*2500H



M072 型倒角座垫架

◆ 规格 (单位: mm)
1835L*660W*2600H



N382 型布艺 / 精品 / 把套架

◆ 规格 (单位: mm)
(1000L*3) *450W*2200H



M027 型直角座垫架

◆ 规格 (单位: mm)
1835L*730W*2637H



N247 型座垫架

◆ 规格 (单位: mm)
1835L*660W*2600H

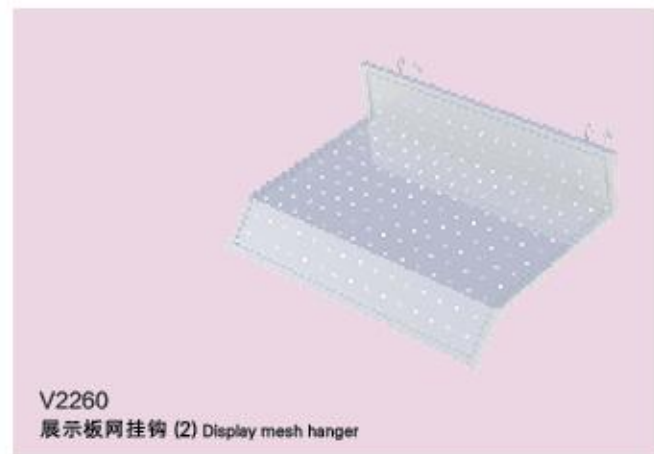
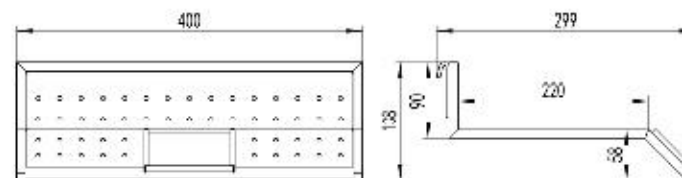
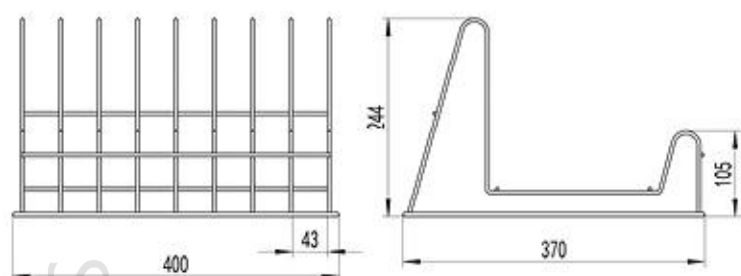
兴达

+ (86) 186-8880-7020

卖场实图 ON-SITE STORE VIEW



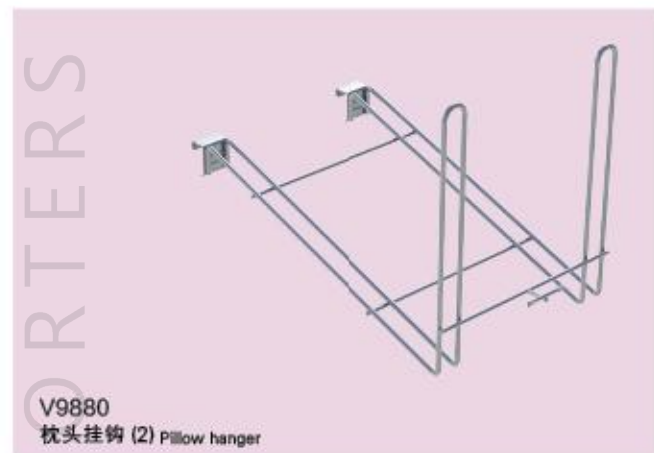
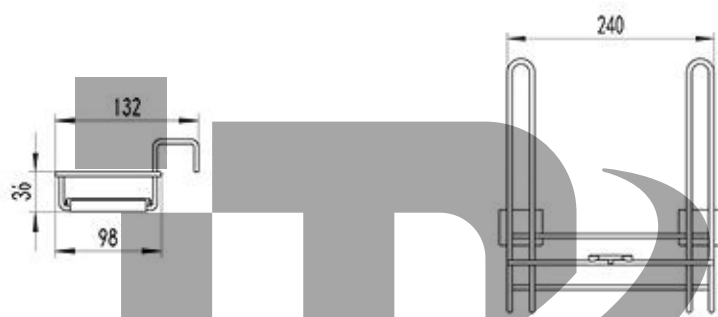
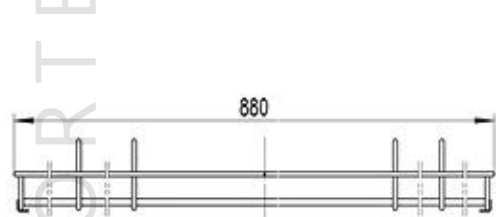
V5020
方向盘格网架 (2) Steering wheel wire mesh rack



V2260
展示板网挂钩 (2) Display mesh hanger



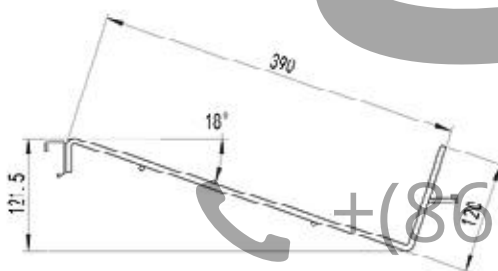
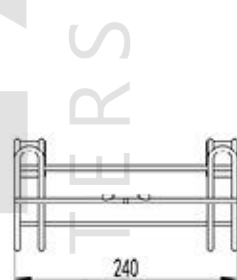
V5350
网层挂篮组合 Wire shelf hanging basket



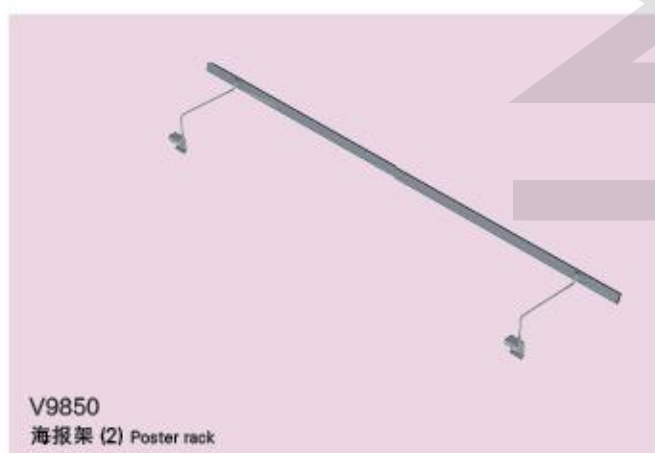
V9880
枕头挂钩 (2) Pillow hanger



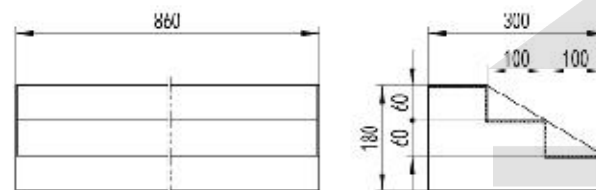
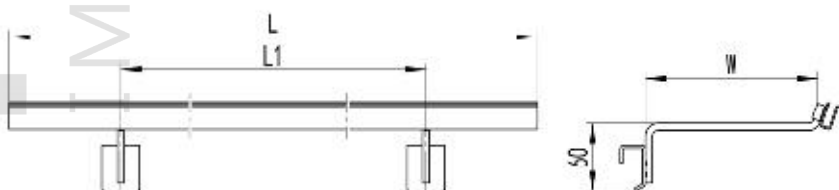
V9840
方向盘托架 (2) Steering wheel rack



V9810
弹簧挂钩 (2) Spring hanger

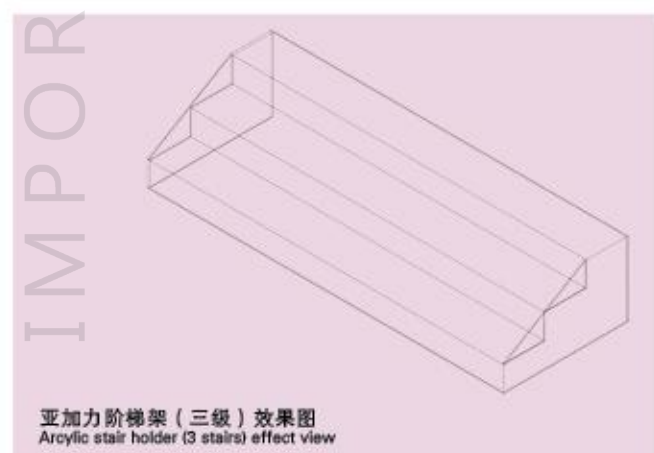


V9850
海报架 (2) Poster rack



尺寸规格	700L	800	920L	1002L	1120L	1200L
L	380	450	550	650	750	850
L1	455	550	650	750	850	950

尺寸规格	100W	150W
W	100	150



亚克力阶梯架 (三级) 效果图
Acrylic stair holder (3 stairs) effect view



规模再宏大的超市，也需要由无数细小而具体的功能来实现其销售的价值，面对种类繁多的商品，超市经营者就需要各种不同的功能配件来辅助展现出商品最打动人心的一面。兴达的设计从实际应用角度出发，生产出一系列具备挂、放、列、横向、纵深等全功能、全方位的功能配件架产品，让商品的艺术更具艺术化与档次感。

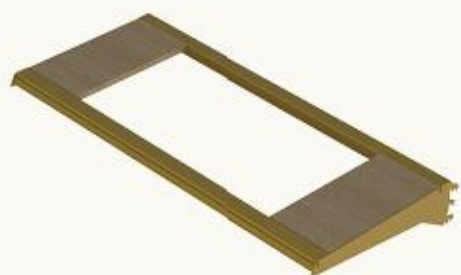
The supermarket, no matter how large it is, needs countless and small specific functions to realize the value of its sales. In the face of a wide variety of goods, supermarket operators need different kind of functional accessories to show the most impressed side of goods. Xingda design from practical application, produces a full series of thorough and comprehensive functions of accessories products of hanging, placing, lining, horizontal or vertical, enriching commodities with more art and feeling.



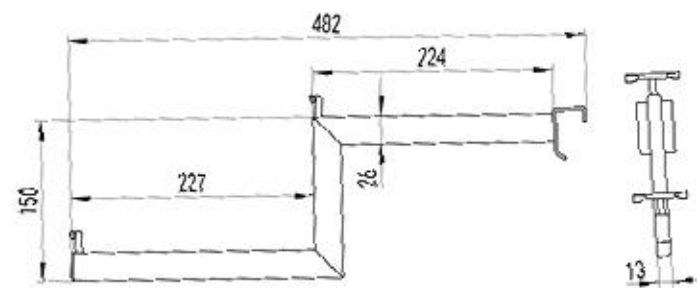
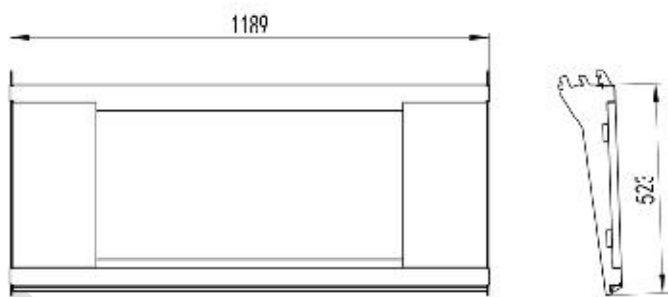
+ (86) 186-8880-7070

功能配件系列
FUNCTIONAL FITTING SERIES

CF-4 25



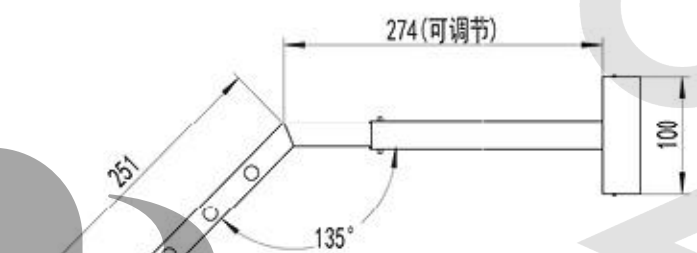
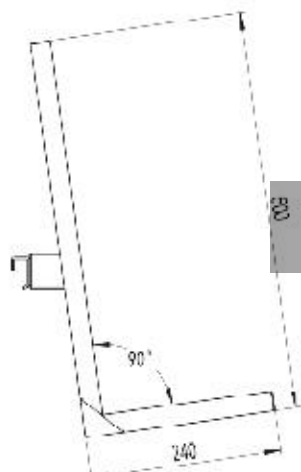
B22-85
燃气灶层板 Gas stove shelf



M138-3
Z型挂钩 (2) Z shape hanger



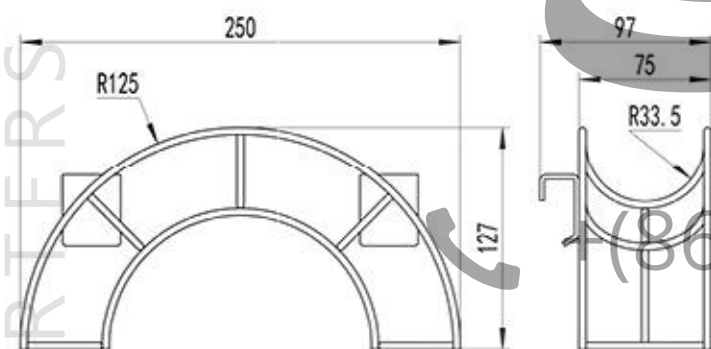
M021-A
吸尘器展架 Vacuum cleaner display rack



M138-5
地毯挂钩 Ground mat hanger



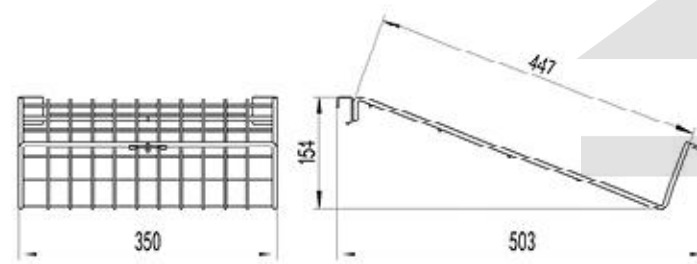
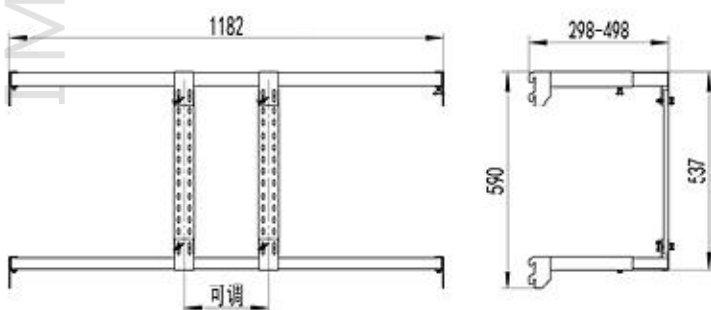
M021-1B
吸尘器管托架 Vacuum cleaner tube rack



M021-21
连续篮 Continuous basket

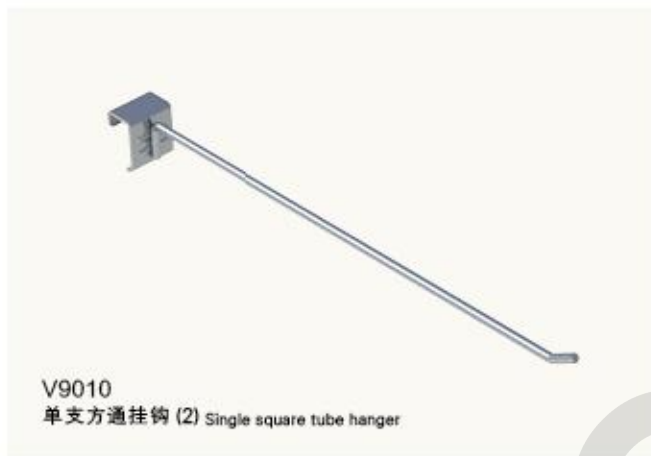


M021-2
液晶电视挂架 TV hanger

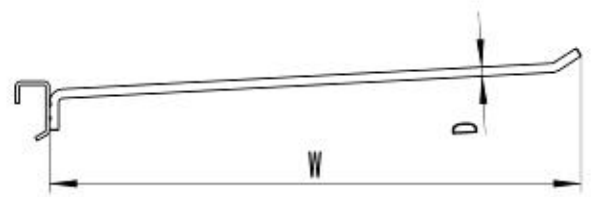


M021-34
餐具托盘架 Tableware & tray rack

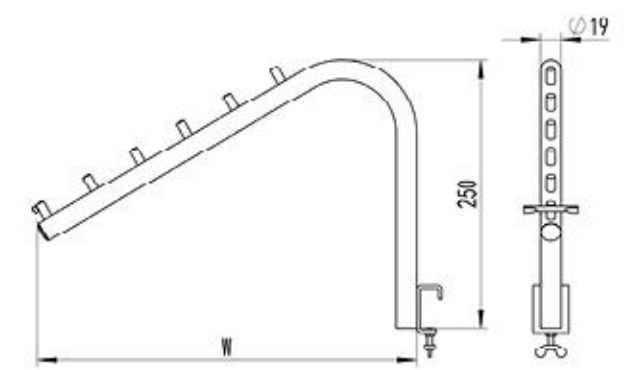




V9010
单支方通挂钩 (2) Single square tube hanger



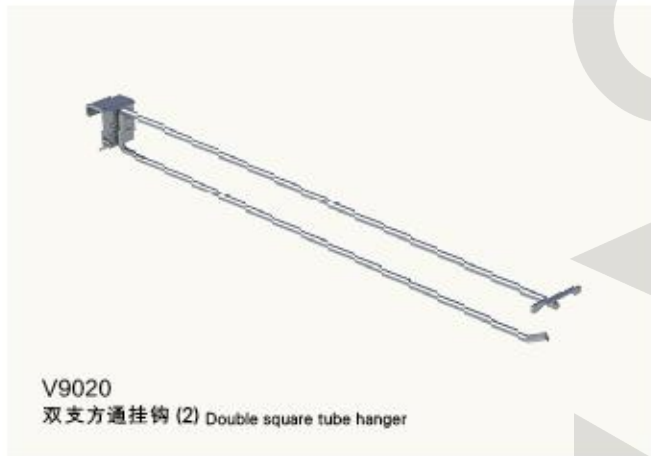
尺寸规格	150W	200W	250W	300W	350W	400W	450W	500W	550W
W	150	200	250	300	350	400	450	500	550
D	φ6	φ6	φ6	φ6	φ6	φ8	φ8	φ10	φ10



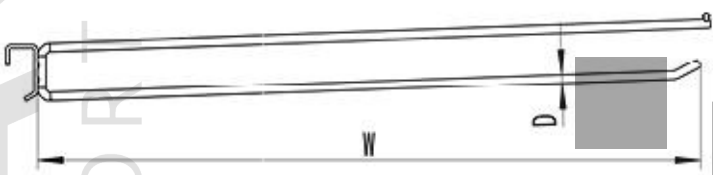
尺寸规格	300W	350W	400W	450W	500W	550W
W	300	350	400	450	500	550



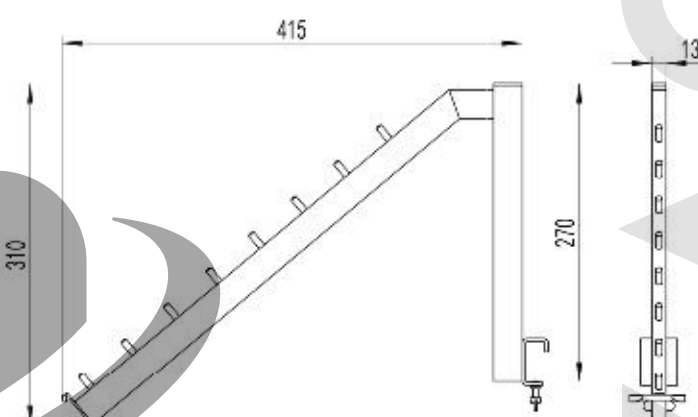
V9320
弯曲挂衣杆 Curving clothes hanger



V9020
双支方通挂钩 (2) Double square tube hanger



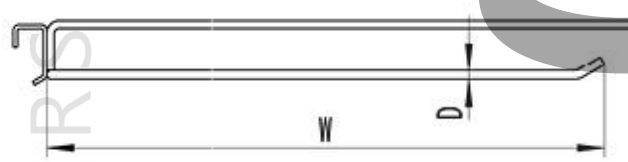
尺寸规格	150W	200W	250W	300W	350W	400W	450W	500W	550W
W	150	200	250	300	350	400	450	500	550
D	φ6	φ6	φ6	φ6	φ6	φ8	φ8	φ10	φ10



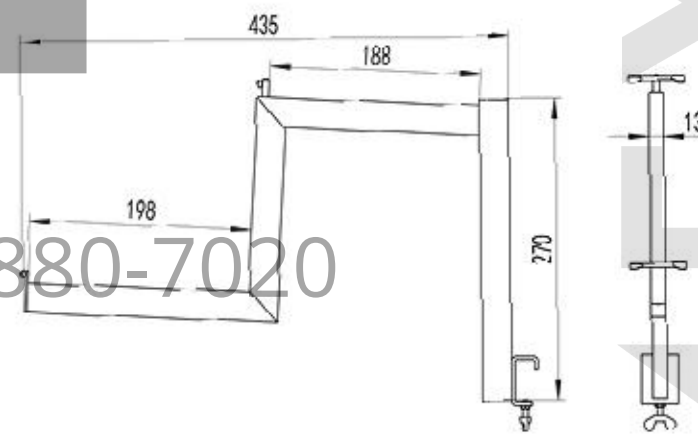
V9340
服装斜挂钩 (2) Clothes oblique hanger



V9040
平行方通挂钩 Paralled square tube hanger



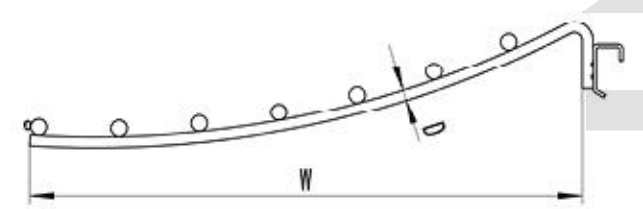
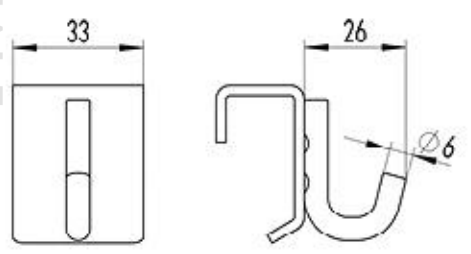
尺寸规格	150W	200W	250W	300W	350W	400W	450W	500W
W	150	200	250	300	350	400	450	500
D	φ6	φ6	φ6	φ6	φ6	φ8	φ8	φ8



V9360
服装高低挂钩 (2) Clothes high-low hanger



V9100
空调挂钩 (2) Air condition hanger



尺寸规格	350W	400W	450W	500W
W	355	405	455	505

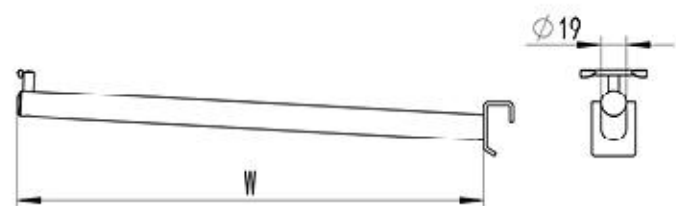
尺寸规格	D8	D10
D	φ8	φ10



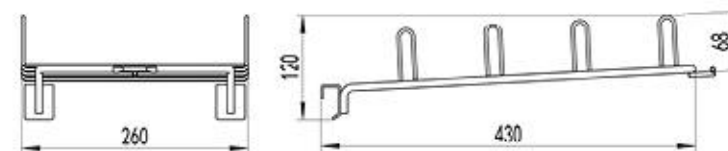
V9370
弯曲圆珠挂钩 (2) Curving ball hanger



V9300
圆管直挂钩 Round tube straight hanger



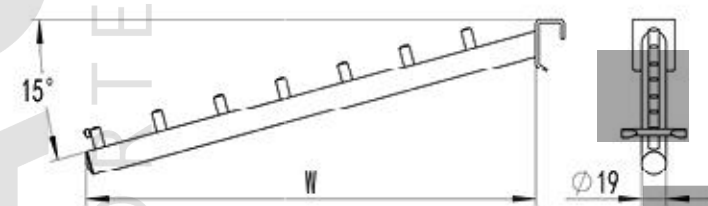
尺寸规格	300W	350W	400W	450W	500W
W	300	350	400	450	500



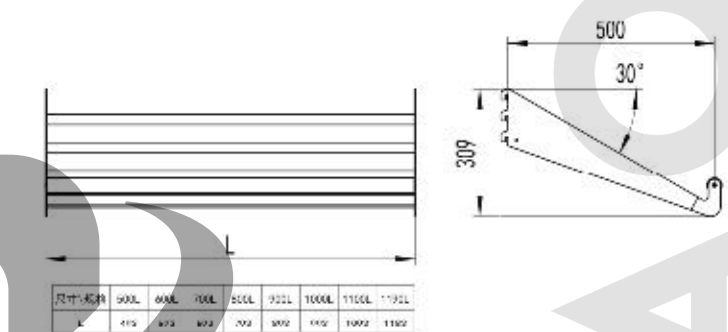
M021-3
溜冰鞋托架 Ice skates rack



V9310
圆管斜挂钩 Round tube oblique hanger



尺寸规格	300W	350W	400W	450W	500W
W	300	350	400	450	500



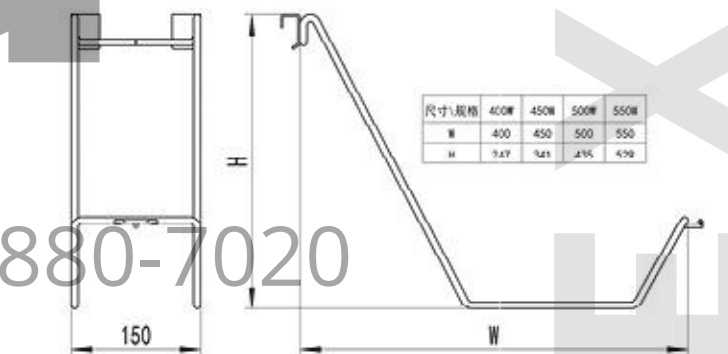
M021-4
箱包层板连托臂 (2) Luggage shelf with brackets



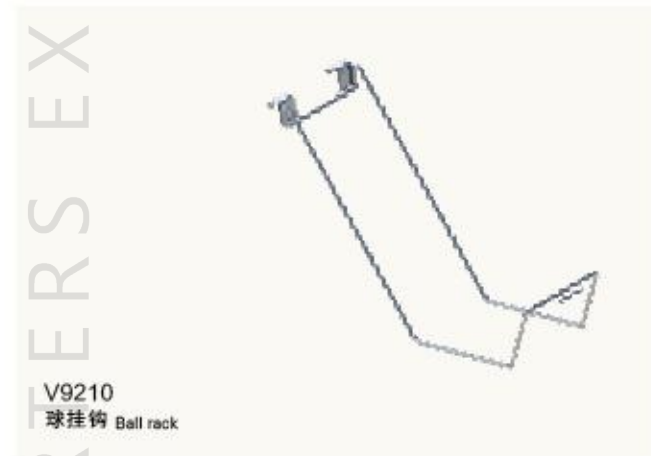
V9330
方管直挂钩 (2) Square tube straight hanger



尺寸规格	300W	350W	400W	450W	500W
W	300	350	400	450	500



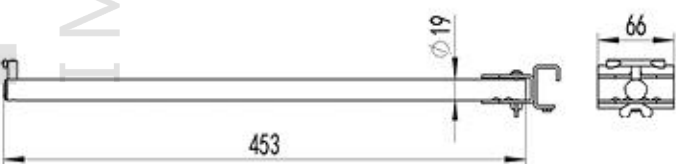
尺寸规格	400W	450W	500W	550W
W	400	450	500	550
H	317	341	365	389



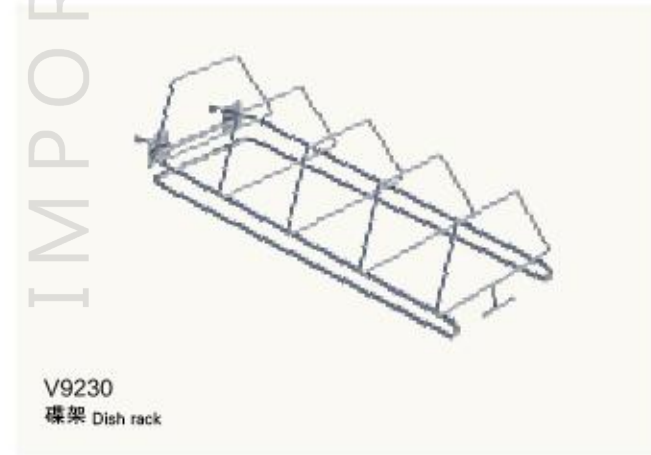
V9210
球挂钩 Ball rack



M021-18
多角度挂钩 Multi-angle hanger



尺寸规格	350W	400W	450W	500W	550W
W	350	400	450	500	550



V9230
碟架 Dish rack

+ (86) 186-8880-7020



V3010
单支平孔挂钩 Single flat-hole hanger



尺寸规格	50W	100W	150W	200W	250W	300W	350W	350W	400W	450W	500W
W	50	100	150	200	250	300	350	350	400	450	500
D	0.6	0.6	0.6	0.6	0.6	0.6	0.6	0.8	0.8	0.8	0.8



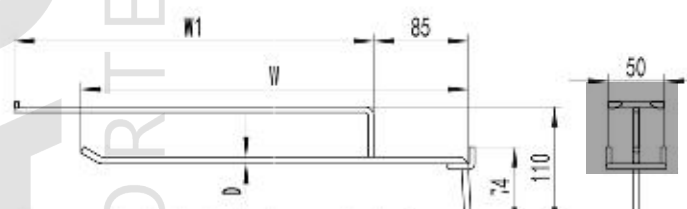
尺寸规格	50W	100W	150W	200W	250W	300W	350W
W	50	100	150	200	250	300	350



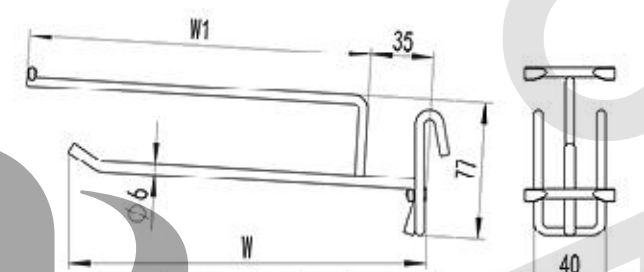
V2010
单支网挂钩 (2) Single mesh hanger



V3020
双支平孔挂钩 Double flat-hole hanger



尺寸规格	120W	150W	200W	250W	300W	350W	350W	400W	450W
W	100	130	200	250	300	350	350	400	450
D	0.6	0.6	0.6	0.6	0.6	0.6	0.8	0.8	0.8



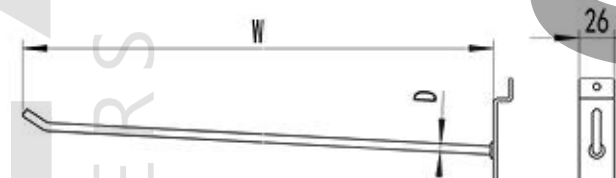
尺寸规格	100W	150W	200W	250W	300W	350W
W	100	150	200	250	300	350
W1	80	130	180	230	280	330



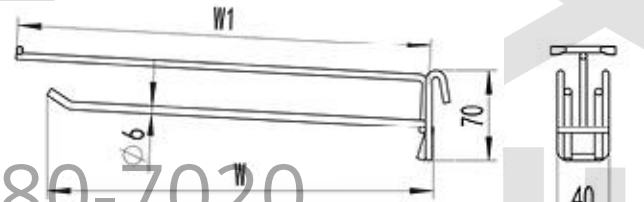
V2020
双支网挂钩 (2) Double mesh hanger



V7010
单支木扣板挂钩 Single wood hanger



尺寸规格	50W	100W	150W	200W	250W	300W	350W	400W	450W	500W
W	50	100	150	200	250	300	350	400	450	500
D	0.6	0.6	0.6	0.6	0.6	0.6	0.6	0.8	0.8	0.8



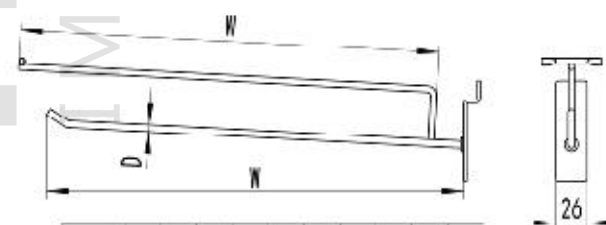
尺寸规格	150W	200W	250W	300W	350W	400W	450W	500W
W	150	200	250	300	350	400	450	500
W1	170	220	270	320	370	420	470	520



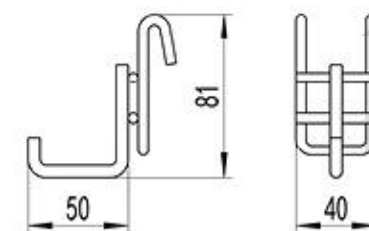
V2050
双支平行挂钩 (2) Double parallel hanger



V7020
双支木扣板挂钩 Double wood hanger



尺寸规格	50W	100W	150W	200W	250W	300W	350W	400W	450W	500W
W	50	100	150	200	250	300	350	400	450	500
D	0.6	0.6	0.6	0.6	0.6	0.6	0.6	0.8	0.8	0.8



V2100
电工工具挂钩 (2) Electrical tool



+ (86) 186-8880-7020



CF-5 1



CF-5 2



CF-5 3



CF-5 4

+ (86) 186-8880-7020



CF-5 5



CF-5 6



CF-5 7



CF-5 8

+ (86) 186-8880-7020



CF-5 9



CF-5 10

+ (86) 186-8880-7020



CF-5 11



CF-5 12

+ (86) 186-8880-7020



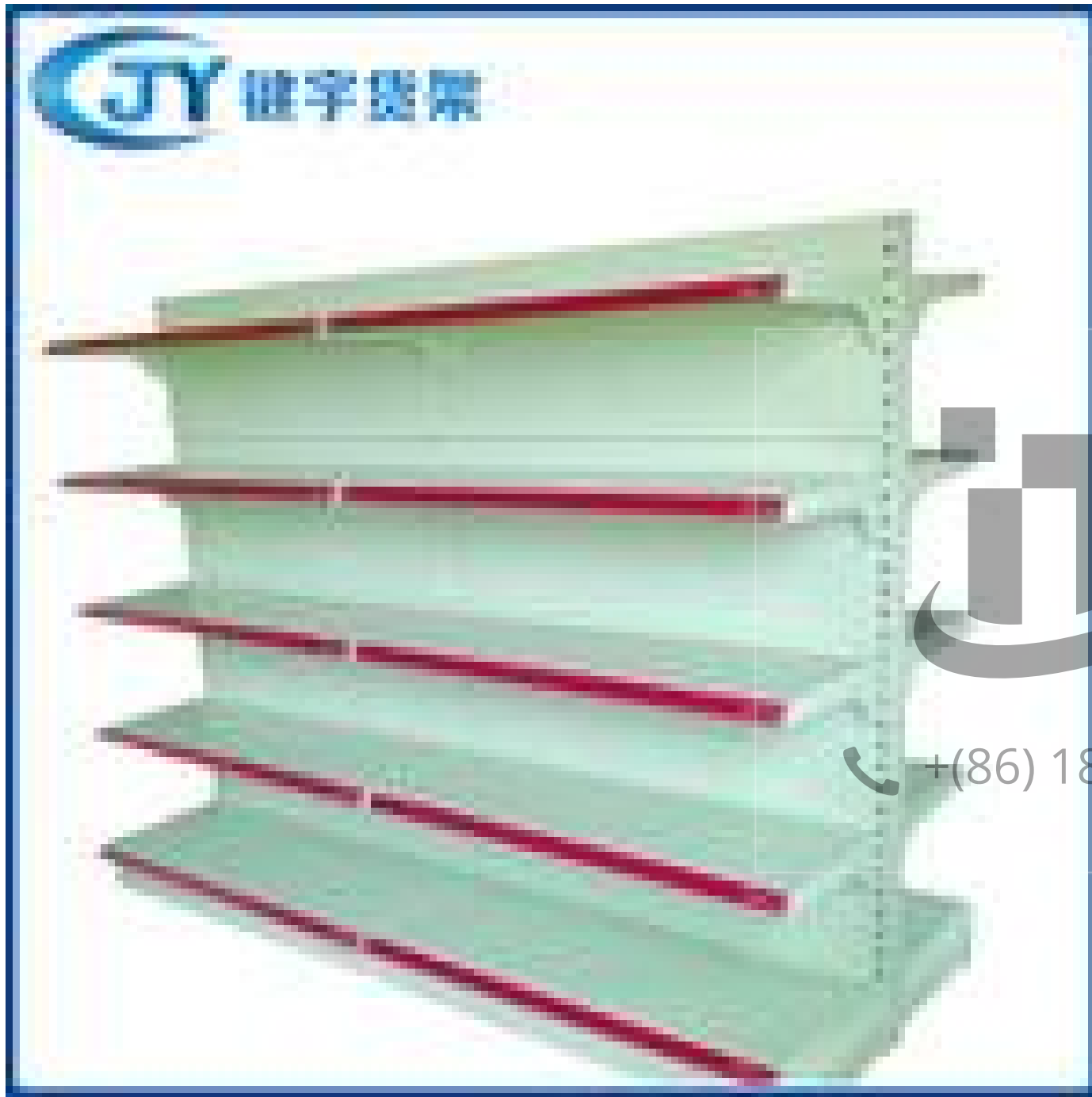
CF-5 13



CF-5 14



+ (86) 186-8880-7020



CF-5 15



CF-5 16

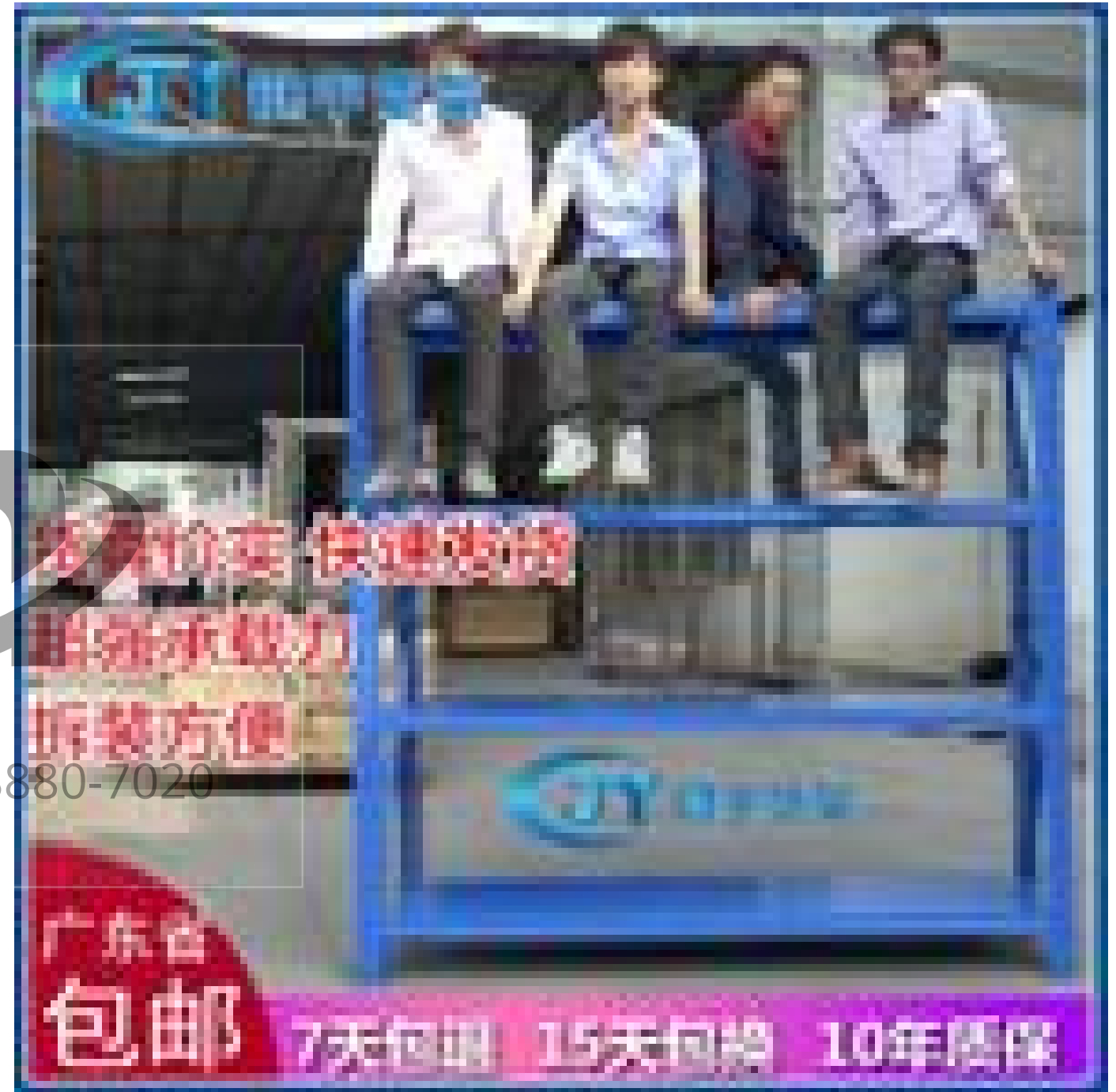
厂家直销 珠三角包邮



300KG
承重之王

30天包退 1年包换 10年质保

CF-5 17



厂家直销 质量过硬
价格公道 服务周到
送货上门 安装方便

+ (86) 186-8880-7020

广东省
包邮

7天包退 15天包换 10年质保

CF-5 18



CF-5 19

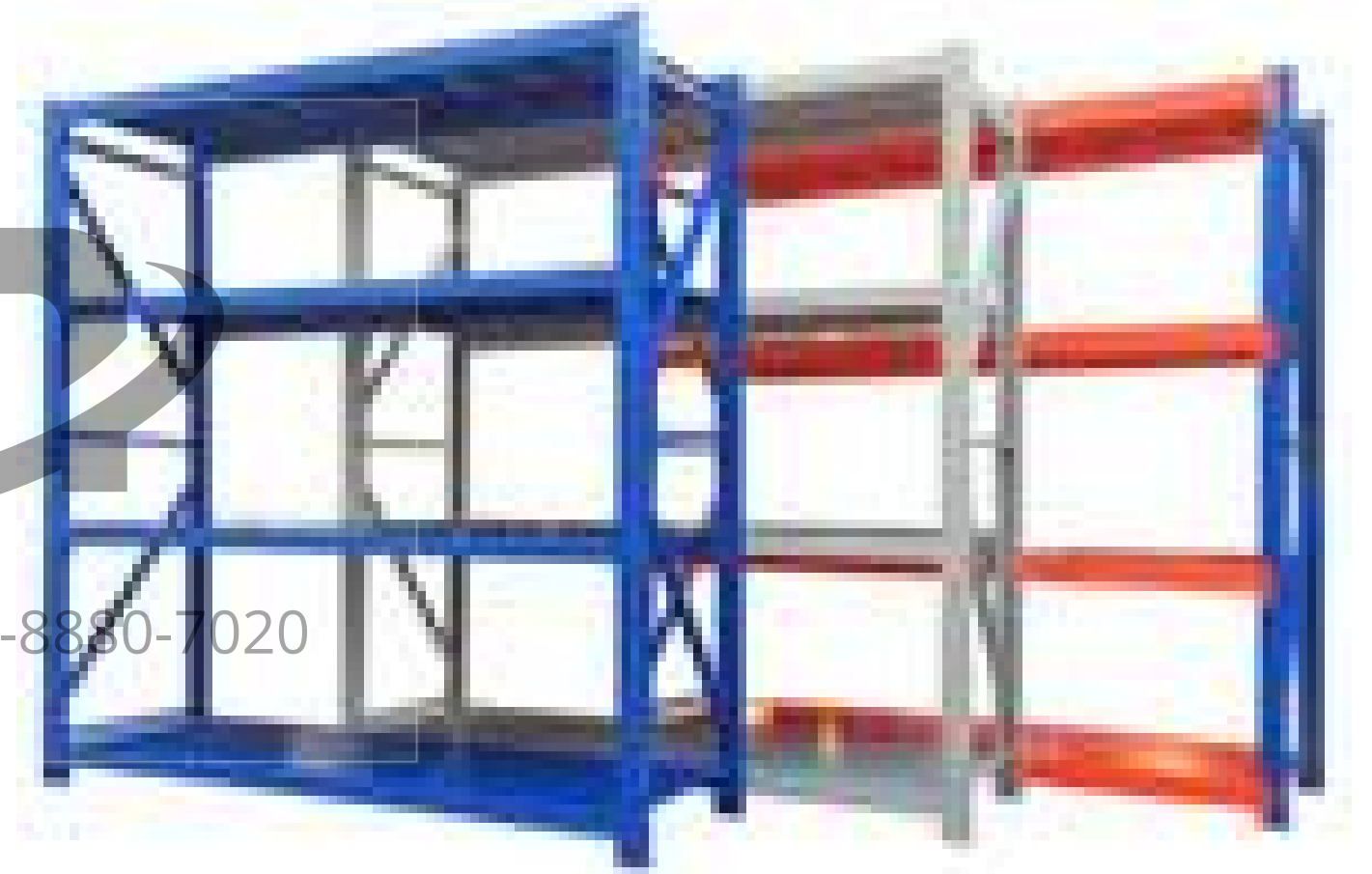


CF-5 20



CF-5 21

每层承重100-200公斤



CF-5 22

+ (86) 186-8880-7020



CF-5 23



CF-5 25

+ (86) 186-8880-7020



CF-5 24



CF-5 26

新品特惠 广东省包邮

多色可选



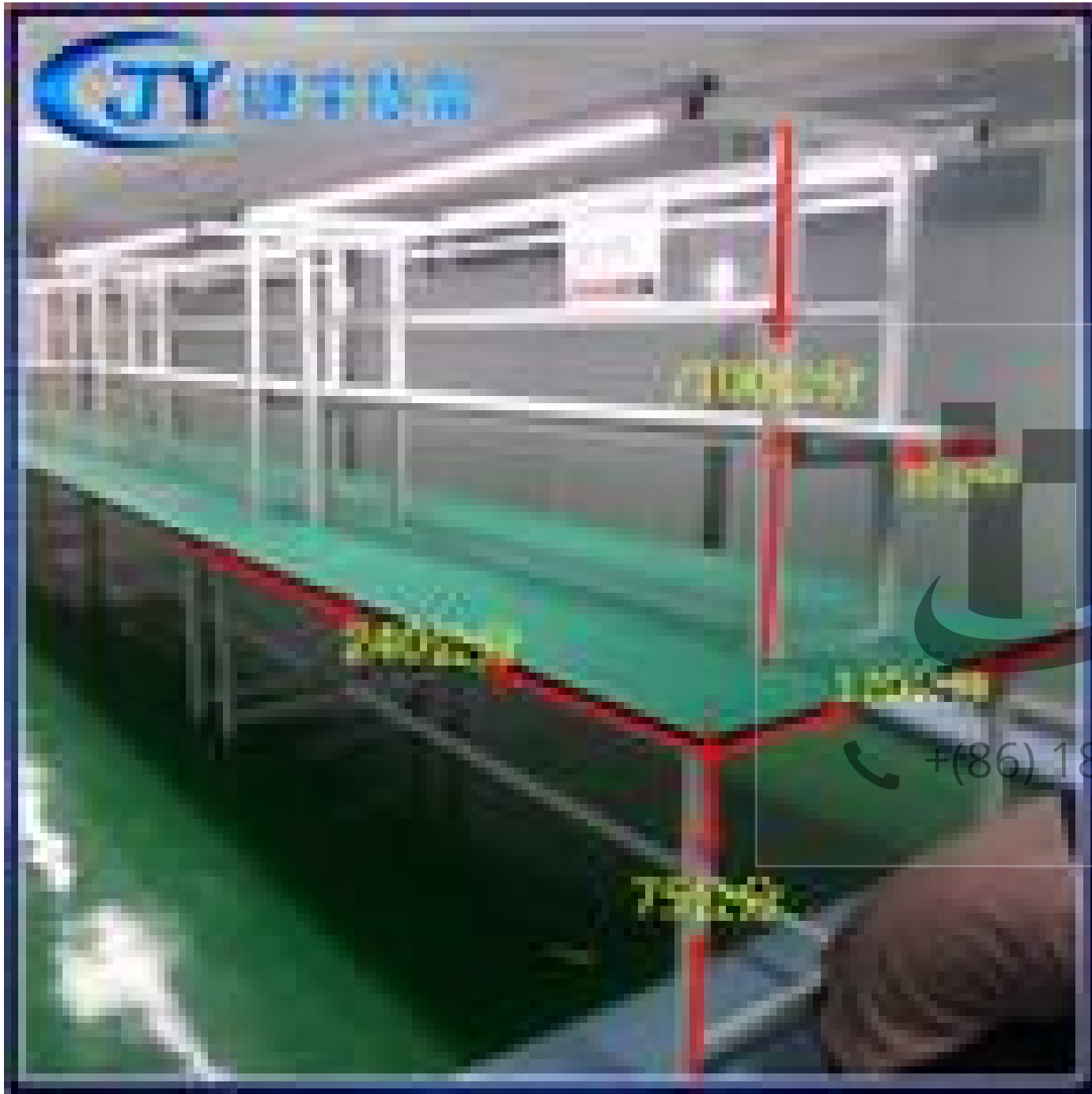
+ (86) 186-8880-7020

质优 价廉 环保

CF-5 27



CF-5 28



CF-5 29



CF-5 30



CF-5 31

+86) 186-8880-7020

每套直降10元 仅此一天

RD-11型超市货架



CF-6 1

RUNDA SHELF
玻璃层板灯光货架



CF-6 2

新款豪华超市货架



CF-6 3

+ (86) 186-8880-7020



CF-6 4



CF-6 5



CF-6 6



+ (86) 186-8880-7020



CF-6 7



CF-6 8



CF-6 9



CF-6 11

MEXACO
IMPORTERS EXPORTERS



+ (86) 186-8880-7020

IMEXACO
IMPORTERS EXPORTERS



CF-6 10



CF-6 12



CF-6 13



CF-6 14



CF-6 15

+ (86) 186-8880-7020



CF-6 16

MEXAO

IMPORTERS EXPORTERS



MEXAO

IMPORTERS EXPORTERS



CF-6 17



CF-6 18



CF-6 19

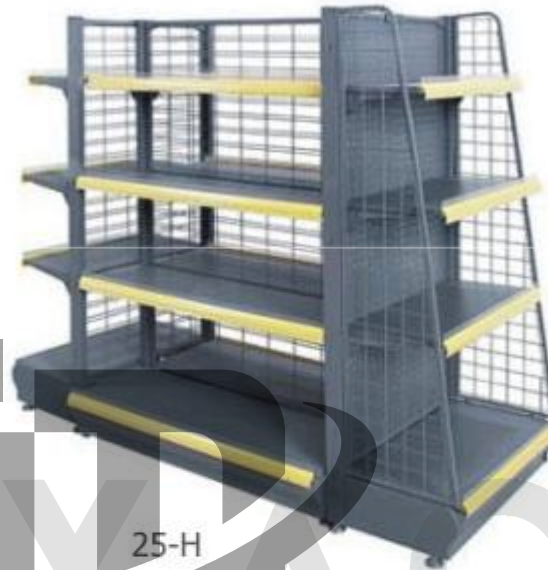


CF-6 20



CF-6 21

+ (86) 186-8880-7020



CF-8 1

IMEXAO
IMPORTERS EXPORTERS
+ (86) 186 8880 7020

Medium Duty Supermarket Rack



30-A



30-B



Net Wire Supermarket Rack

Heavy Duty Supermarket Rack



40-A



30-J

CF-8 2

IMPORTERS EXPORTERS  + (86) 186-8880-7020



ADA 61



ADA 62



ADA 63



ADA 64



ADA 66



ADA 67

CF-8 3

+ (86) 186-8880-7020



ADA 232

Magazine Rack

900x320x1800mm
1200x320x1800mm
1200x320x1800mm
1200x320x1800mm



ADA 233

Newspaper Rack

430x370x1300mm
430x370x1500mm



Display Light Box

Size:Customize



ADA 205

**Double Layers
Promotional Cart**



ADA 206

Netting Promotion Rack

550x410x776mm



ADA 207

**Chromed Beveled
Edge Cage**

CF-8 4

+ (86) 186-8880-7020



ADA 201

Promotional Rack A
400x300x900mm



ADA 202

Promotional Rack B
400x400x1350mm



ADA 203

Promotional Rack C
500x250x1200mm



ADA 204

Promotional Rack D
600x600x1200mm



ADA 231

**Small Rack For
Cashier Desk**
480x150x600mm
600x150x600mm



ADA 237

**Wooden Bread
Display Rack**
600x300x1400mm

CF-8 5

+ (86) 186-8880-7020



ADA 208

Promotional Display Shelf A

1100x750x860mm
1200x750x860mm
150x750x860mm



ADA 209

Promotional Display Shelf B

1200x1000x850mm



ADA 271

Wooden Rice Box

1000x1000x850mm



ADA 210

Rough Feet Display Rack

712x443x880mm



ADA 211

Movable Promotional Display Shelf

1200x900x900mm



ADA 272

Rack For Dried Food A

1000x1000x850mm



ADA 273

Rack For Dried Food B

1230x750x1500mm

CF-8 6

(86) 186-8880-7020



ADA 234

Cigarette Display Cabinet A

580x320x1460mm



ADA 235

Cigarette Display Cabinet B

600x350x2300mm



ADA 236

Wine Cabinet

600x350x2300mm



ADA 238

Bread Display Cabinet

1360x500x1600mm
2020x1500x1600mm



ADA 239

Glass Fronted Display Cabinet

900x550x900mm

+ (86) 186-8880-7020

CF-8 7

Compatible Accessories



ADA 261
**Rolling Bag
Stand-Handing Type**
Φ150x1000mm



ADA 262
**Rolling Bag
Stand- Standing Type**
Φ400*1000mm



ADA 263
Weighing Platform
450x450x800mm



ADA 264
Plastic Basket
600x400x200mm



ADA 321
Shopping Basket Holder
470x335x330mm



ADA313
Plastic Shopping Basket
485x330x280mm



ADA315
Wire Shopping Basket
450x320x200mm

CF-8 8

+ (86) 186-8880-7020

Compatible Accessories



ADA 301
Shopping Trolley A
500x250x1200mm



ADA 302
Shopping Trolley B



ADA 303
Shopping Trolley C



ADA 303
Shopping Trolley D

CF-8 9

+ (86) 186-8880-7020

Cash Counter



ADA W600-A



ADA W600-B



W900-B



ADA R600-A



ADA W900-A



+ (86) 186 8880-7020



Combine ADA W600&900



CF-8 10



T35

T35 Warehouse Rack



ADA 120

Light Duty Warehouse Rack A



ADA 123/125

Medium Duty Warehouse Rack B



ADA 150

Heavy Duty Warehouse Rack C

CF-8 11

+ (86) 186-8880-7020



ADA 160

Chrome Plated Wire Shelving

Length(mm):910/1220
Weight(mm):455/610
Height(mm):1600/1800
Capacity:250kg/layer



ADA 351

Ascending Dispatch Trolley

1060x530x1040mm
Capacity:180kg
Casters:Φ100mm
Finished:Power



ADA 352

Platform Trucks With One Handle



ADA 353

Storage Cage



ADA 354

Butterfly Storage Cage

CF-8 12

+ (86) 186-8880-7020



ADA 355



ADA 356



ADA 357



ADA 358

CF-8 13

+ (86) 186-8880-7020



名称: 洽谈台
规格: 3600*1200*950H
材质: 人造大理石台面, 木纹饰面, 拉丝不锈钢
Name: Interactive table
Specifications: 3600*1200*950H
Material: Top: artificial marble, veneer finish, brushed stainless steel slitting



名称: 金融产品展示台
规格: 2820*1280*950H
材质: 人造大理石台面, 木纹饰面, 拉丝不锈钢
Name: E-banking counter
Specifications: 2820*1280*950H
Material: Top: artificial marble, veneer finish, brushed stainless steel slitting



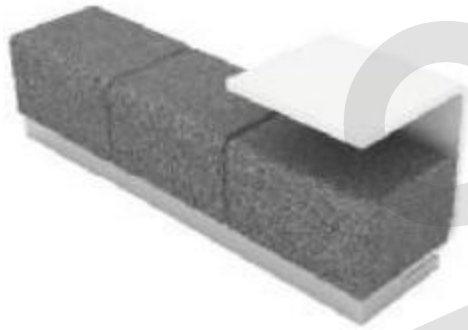
名称: 非现金柜台
规格: 主台1820*780*750H, 副柜2000*450*750H
材质: 白色烤漆, 木纹饰面, 拉丝不锈钢饰面
Name: Non-cash counter
Specifications: Main table: 1820*780*750H, back cabinet: 2000*450*750H
Material: white 2-pack paint finish, veneer finish, with brushed stainless steel slitting



名称: 洽谈桌椅 Name: Negotiation table and chair

名称: 黄金展示柜
规格: 500*500*1500H
材质: 白色烤漆, 木纹饰面, 10MM钢化玻璃
Name: Showcase for gold
Specifications: 500*500*1500H
Material: White 2-pack paint finish, veneer finish, 10mm clear tempered glass

+ (86) 186-8880-7020



名称: 等候沙发
规格: 1500*500*100H
材质: 白色烤漆, 灰色环保皮饰面, 拉丝不锈钢脚座
Name: Waiting sofa
Specifications: 1500*500*100H
Frame: white 2 pack paint finish grey PU upholstery, stainless steel skirting



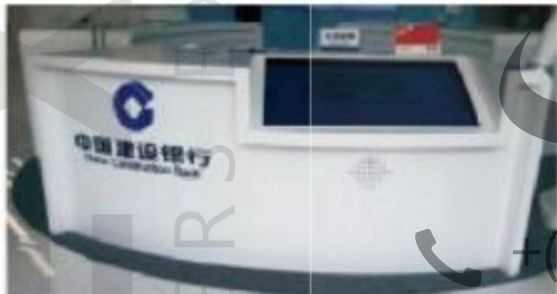
名称: V型等候沙发
规格: 2200*2200*2200*900H, 茶几1060*600*450H
材质: 白色烤漆, 灰色环保皮饰面, 拉丝不锈钢脚座
Name: Waiting couch for VIP
Specifications: Sofa 2200*2200*900, table 1060*600*450H
Frame: white 2 pack paint finish grey PU upholstery, stainless steel skirting



名称: V型理财桌
规格: 理财桌1800*2000*760H, 背柜1800*450*1900H
材质: 白色烤漆, 灰色环保皮饰面, 拉丝不锈钢脚座
Name: Manager table
Specifications: Financial table 1800*2000*760H, The back cabinet 1800*450*1900H
Frame: white 2 pack paint finish grey PU upholstery, stainless steel skirting

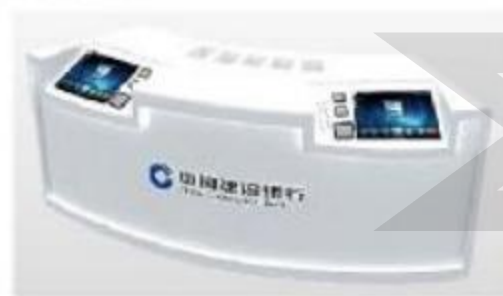


+ (86) 186-8880-7020



名称: 智能柜台
规格: 2687*900*950H
材质: 白色烤漆柜体

Name: Intelligent counter
Specifications: 2687*900*950H
Material: Body: white 2 pack paint finish



名称: 智能柜台
规格: 3170*900*950H
材质: 白色烤漆柜体

Name: Intelligent counter
Specifications: 3170*900*950H
Material: Body: white 2 pack paint finish



名称: 体验区智能互动桌
规格: 3010*700*920H
材质: 白色烤漆柜体

Name: Experience area intelligent interactive table
Specifications: 3010*700*920H
Material: White paint cabinet



名称: 可移动式金融超市柜台
规格: 2700*700*920H
材质: 白色烤漆柜体

Name: Visualization of the financial supermarket counters
Specifications: 2700*700*920H
Material: White paint cabinet

+(86) 186-8880-7020



名称: 电子网上银行
规格: 3000*600*1100H
材质: 白色烤漆柜体
Name: E-banking counter
Specifications: 3000*600*1100H
Material: Body: white 2 pack paint finish



名称: 金融区智能互动桌
规格: 1800*700*920H
材质: 白色烤漆柜体
Name: Interactive counter
Specifications: 1800*700*920H
Material: Body: white 2 pack paint finish



名称: 个人网银网银台
规格: 1200*600*1100H
材质: 白色烤漆柜体
Name: Table for personal internet-banking
Specifications: 1200*600*1100H
Material: Body: white 2 pack paint finish



名称: 移动金融区茶几
规格: 1200*600*950H
材质: 白色烤漆柜体
Name: Counter for mobile phone bank
Specifications: 1200*600*950H
Material: Body: white 2 pack paint finish

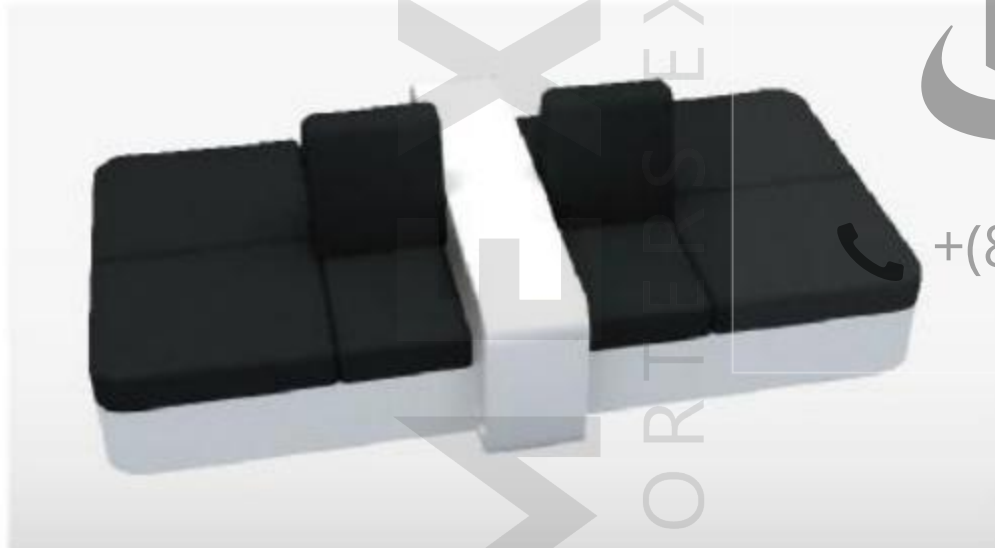
+ (86) 186-8880-7020



名称: 黄金贵金属柜一
规格: 1118*400*1723H
材质: 白色烤漆柜体
Name: Showcase for gold metal
Specifications: 1118*400*1723H
Material: Body: white 2 pack paint finish



名称: 黄金贵金属柜二
规格: 500*500*1350H
材质: 白色烤漆柜体, 钢化玻璃
Name: Showcase for gold metal
Specifications: 500*500*1350H
Material: Body: white 2 pack paint finish
Glass: Clear tempered glass



名称: 休息区沙发
规格: 2500*1680*820H
材质: 白色烤漆, 灰色环保皮

Name: Lounge
Specifications: 2500*1680*820H
Material: Prime: White 2-paint coat finish, grey PU upholstery

客户经理引导区效果图 Visuals for guiding area of relationship manager



主要功能为对进入网点的客户进行识别、引导和分流。主要设备有: 背景墙、接待台、叫号机、办公电脑、区域指示牌。
Main function: Identify and guide clients who enter the service hall for different business. Components: Background wall, Reception, Numbering machine, Signs.



名称: 接待台
规格: 2000*1000*1200H
材质: 不锈钢烤漆柜, 白色大理石, 白橡木饰面
Name: The reception desk
Specifications: 2000*1000*1200H
Material: Stainless steel sloting, white artificial marble, white oak wood veneer finish.

+ (86) 186-8880-7020



VIP体验区效果图 Visual for VIP area



VIP体验区应设置在贵宾理财区入口附近。与休息等候区相结合，使客户在休息等候时，大堂经理可引导客户进行操作，增强与客户互动体验。
Experience area for VIP is next to entry of VIP financial department, where relationship manager can talk with client when they have a break here. Encouraging more interactness with customers.



+ (86) 186-8880-7020



名称: VIP接待台
规格: 2000*1000*1200H
材质: 不锈钢饰面, 黑色大理石, 樱桃木饰面
Name: Reception for VIP customers
Specifications: 2000*1000*1200H
Material: Stainless steel slating line, black marble, cherry wood finishes



名称: VIP网银操作台
规格: 700*1800H
材质: 不锈钢饰面, 深灰色烤漆柜体, 樱桃木饰台面, 亚克力灯
Name: Internet banking table for VIP
Specifications: 700*1800H
Material: Stainless steel base, Body: Dark grey 2 pack paint finish, Top: cherry veneer finish



名称: VIP实业业务柜台
规格: 主台: 1500*350*800H,
副柜: 1400*450*800H
材质: 主台及副柜柜体灰色三胺板,
副柜台面樱桃木皮饰面
Name: Teller counter for VIP
Specifications: Main table: 1500*350*800H,
side table: 1400*450*800H
Material: Body: grey melamine,
Top of side table: cherry veneer finish



名称: VIP理财经理桌
规格: 文件柜: 2400*450*2400H,
主台: 1500*1000*750H
材质: 主台及文件柜樱桃木皮饰面,
灰色烤漆饰面
Name: Manager table for VIP room
Specifications: File cabinet: 2400*450*2400H,
main table: 1500*1000*750H
Material: Cabinet and top of table: Cherry veneer finish,
Grey powder coated table leg

+ (86) 186-8880-7020



名称: VIP茶水柜
规格: 4290*450*3000H
材质: 樱桃木皮饰面

Name: Tea cabinet for USP
Specifications: 4290*450*3000H
Material: Cherry wood finishes



现金交易区效果图 Visual for cash business area



现金交易区位于自助银行区同一侧，在网点相对独立的位置。主要功能为支行网点的综合服务场所，为个人白银客户、黄金客户提供大额存款、开户、签约、换户、挂失等服务；为对公客户提供现金服务。主要设备有：现金业务柜台、休息等候椅、电视媒体、填单台、银行式ATM、网银操作台、饮水机。

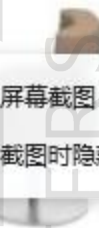
Cash business area and self-banking area are in the same place, where privacy can be guaranteed easily. Functions: granting service, such as acceptance of big amount, open account, outback signing, account-maturing, report of loss, for VIP personal clients and doing cash-business with companies. Components: Teller counter waiting chair, TV, counter for Web-banking, ATM, Counter of internet-banking, Drinking water machine.



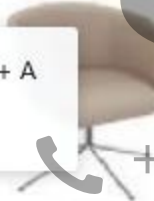
职员椅
Staff chair



客户座椅
Chair for clients



体验椅
Lounge



VIP座椅
Chair for VIP

屏幕截图 Ctrl + Alt + A
✓ 截图时隐藏当前窗口

+ (86) 186-8880-7020



等候沙发
Waiting couch



单人位沙发
Single-person sofa



三人位等候椅
Waiting chair for three-person



CF-10 1



+ (86) 186-8880-7020



CF-10 2

CF-10 3



IMPO



+ (86) 186-8880-7020

CF-10 4



IMPORTERS EXPORTERS



"Let us help to build your dreams"

MEIXAO IMPORTERS EXPORTERS

CF-10 5



+ (86) 186-8880-7020

CF-10 6



"Let us help to build your dreams"



CF-10 7



CF-10 8



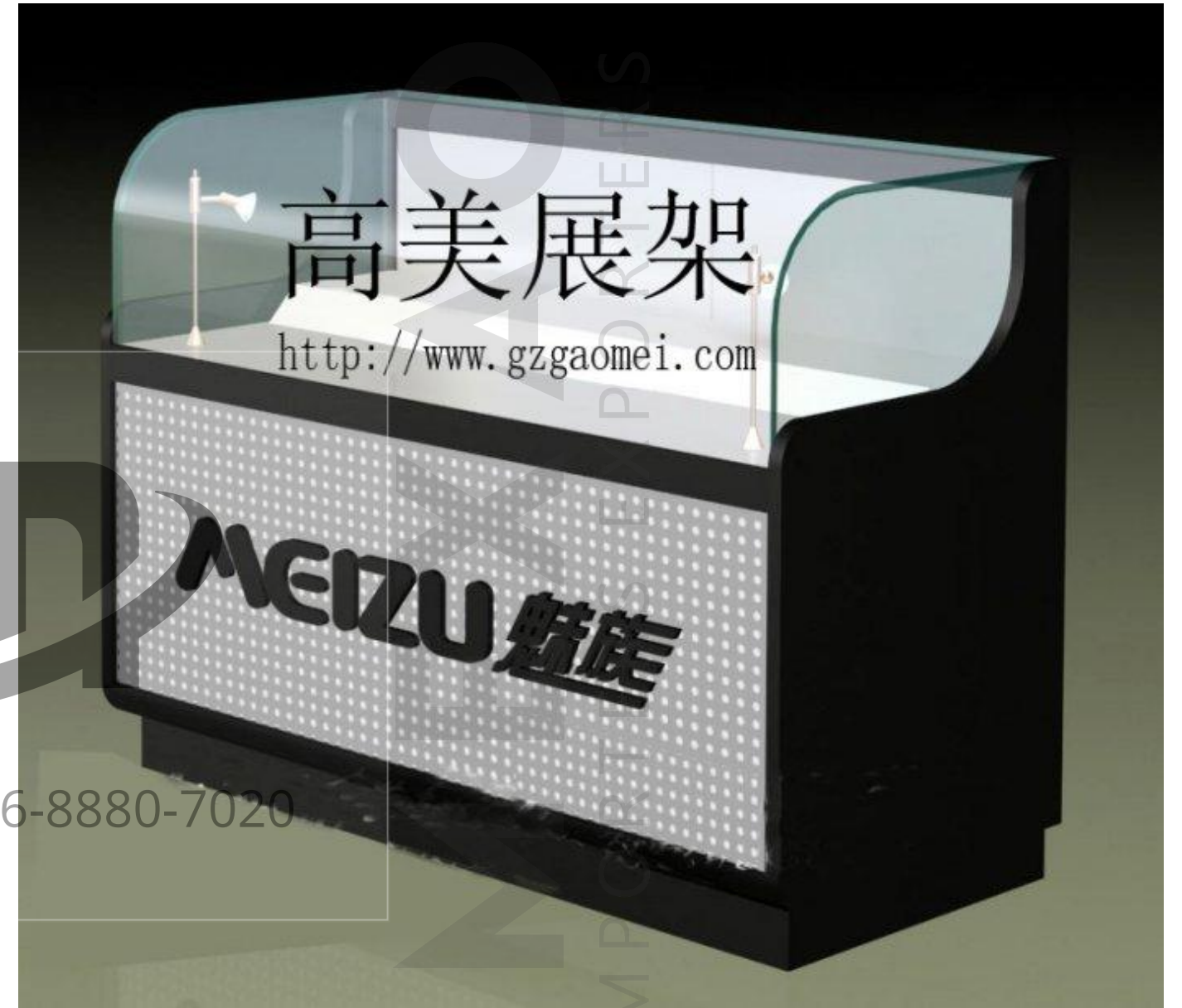
CF-10 9



CF-10 10



CF-10 11

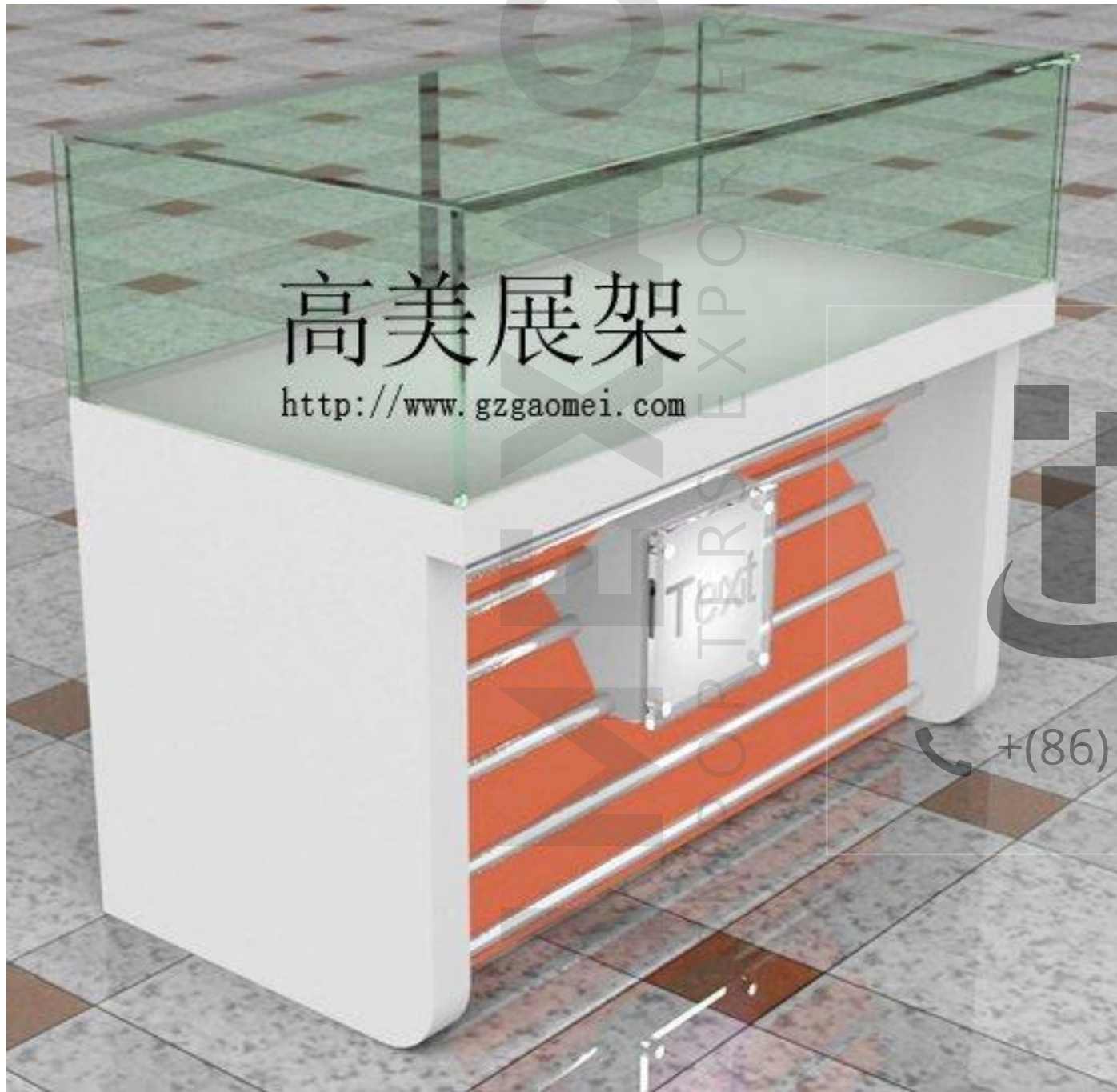


CF-10 12



"Let us help to build your dreams"

+ (86) 186-8880-7020

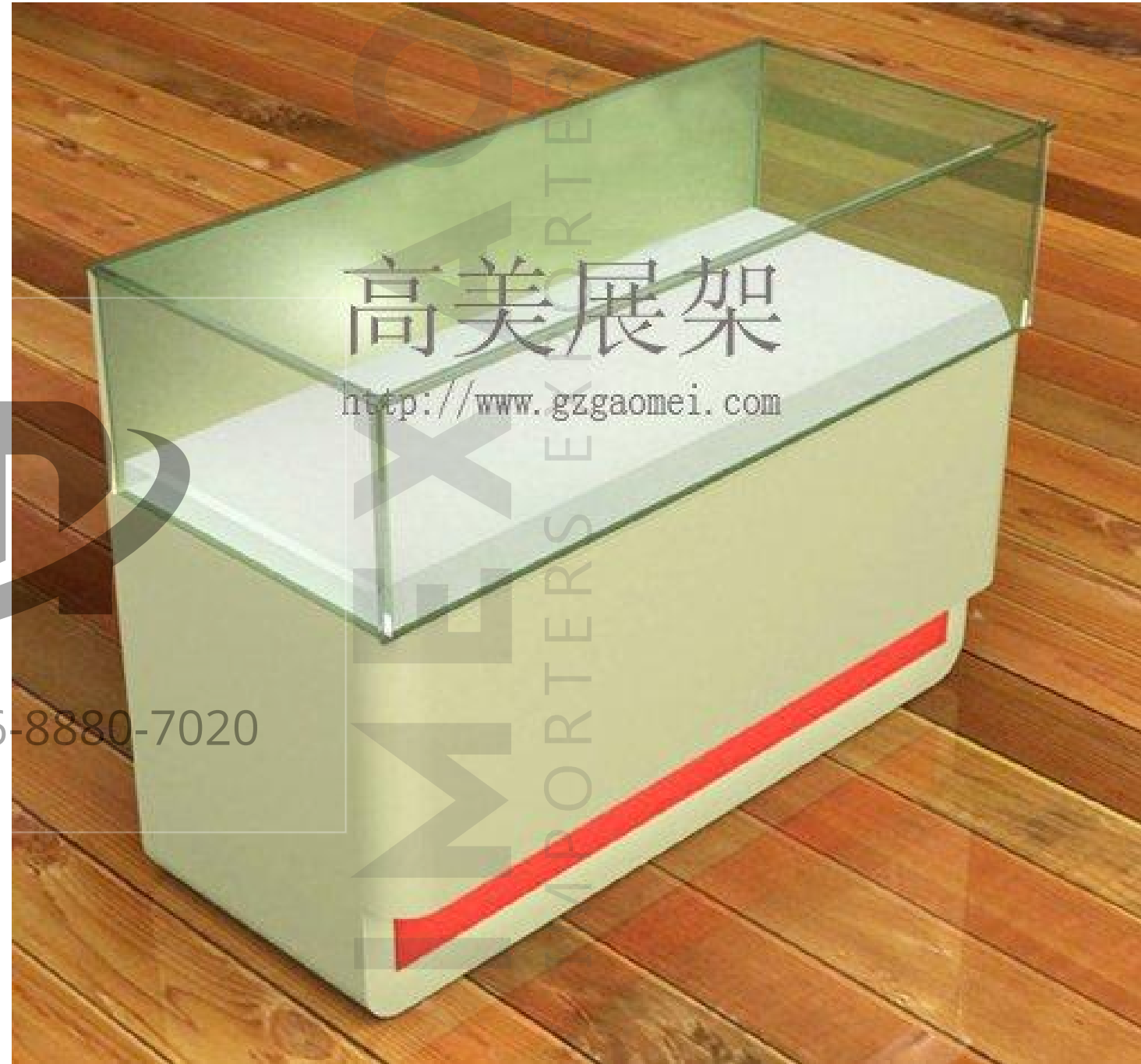


高美展架

<http://www.gzgaomei.com>

+ (86) 186-8880-7020

CF-10 13



高美展架

<http://www.gzgaomei.com>



"Let us help to build your dreams"

CF-10 14



CF-10 15



CF-10 16

+ (86) 186-8880-7020



"Let us help to build your dreams"



CF-10 17



CF-10 18



高美展架

<http://www.gzgaomei.com>

+ (86) 186-8880-7020

CF-10 19



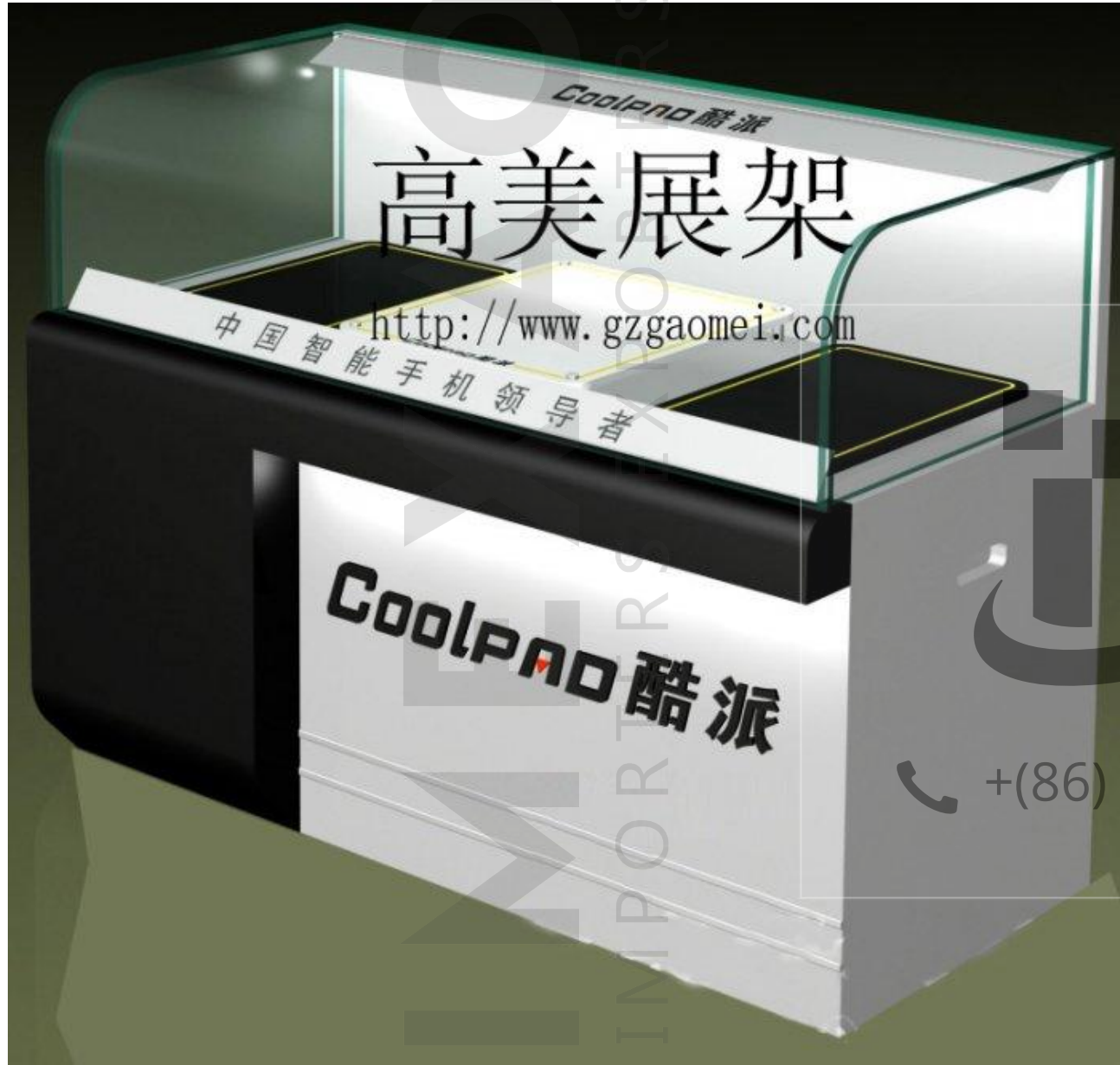
高美展架

<http://www.gzgaomei.com>

CF-10 20



"Let us help to build your dreams"



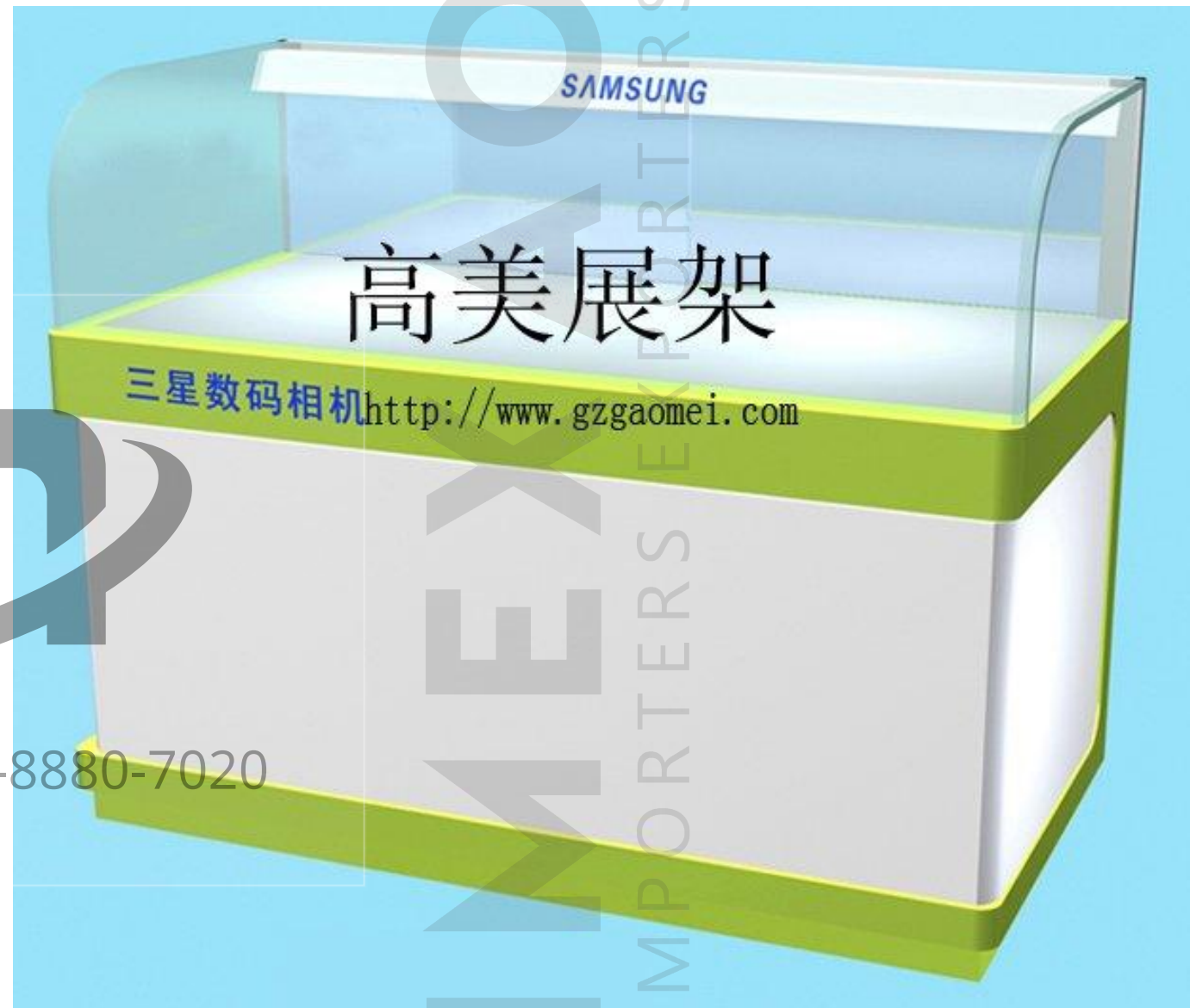
CF-10 20



CF-10 21



CF-10 23



CF-10 24



+ (86) 186-8880-7020



"Let us help to build your dreams"



+ (86) 186-8880-7020

CF-10 25

CF-10 26

Thank You

We appreciate your time and attention. If you have any questions or need further information, please feel free to reach out.

 **CHINA OFFICE**

Room 19, 2nd Floor DeYi Commercial Building Construction Road No. 4th, Lecong Town Shunde Foshan, Guangdong, Postal code: 528 315

佛山市顺德区乐从镇建设路四号德怡商业大厦北门二楼19-3铺 528315

 + (86) 186-8880-7020  goldy@imexao.com



@imexao